

Trial Examination 2012

VCE Specialist Mathematics Units 3 & 4

Written Examination 1

Question and Answer Booklet

Reading time: 15 minutes

Writing time: 1 hour

Student's Name: _____

Teacher's Name: _____

Structure of Booklet

Number of questions	Number of questions to be answered	Number of marks
11	11	40

Students are permitted to bring into the examination room: pens, pencils, highlighters, erasers, sharpeners, rulers.

Students are not permitted to bring into the examination room: notes of any kind, a calculator of any type, blank sheets of paper and/or white out liquid/tape.

Materials supplied

Question and answer booklet of 12 pages. Formula sheet of miscellaneous formulas.

Working space is provided throughout the booklet.

Instructions

Write **your name** and your **teacher's name** in the space provided above on this page.

All written responses must be in English.

Students are NOT permitted to bring mobile phones and/or any other unauthorised electronic devices into the examination room.

Students are advised that this is a trial examination only and cannot in any way guarantee the content or the format of the 2012 VCE Specialist Mathematics Units 3 & 4 Written Examination 1.

Neap Trial Exams are licensed to be photocopied or placed on the school intranet and used only within the confines of the school purchasing them, for the purpose of examining that school's students only. They may not be otherwise reproduced or distributed. The copyright of Neap Trial Exams remains with Neap. No Neap Trial Exam or any part thereof is to be issued or passed on by any person to any party inclusive of other schools, non-practising teachers, coaching colleges, tutors, parents, students, publishing agencies or websites without the express written consent of Neap.

Instructions

Answer **all** questions in the spaces provided.

A decimal approximation will not be accepted if an **exact** answer is required to a question.

In questions where more than one mark is available, appropriate working **must** be shown.

Unless otherwise indicated, the diagrams in this booklet are **not** drawn to scale.

Take the **acceleration due to gravity** to have magnitude $g \text{ m/s}^2$, where $g = 9.8$.

Question 1

For the curve with parametric equations

$$y = \sin(3t)$$

$$x = e^t$$

find the equation of the tangent at the point $(1, 0)$.

2 marks

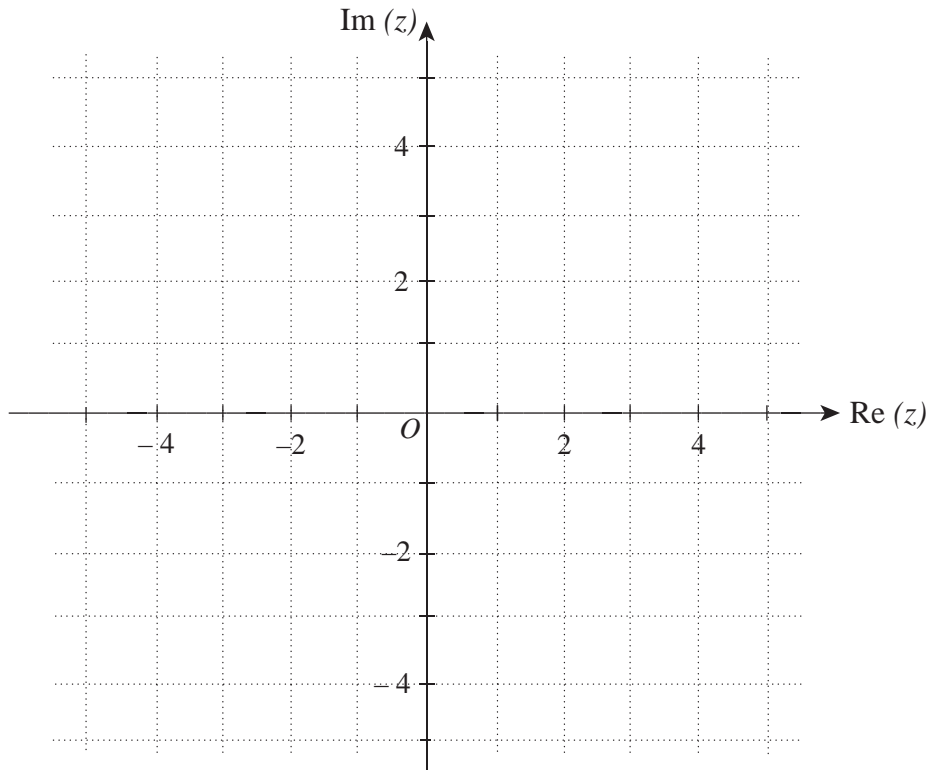
Question 2

Evaluate $\int_1^4 \frac{e^{\sqrt{x}}}{\sqrt{x}} dx$.

2 marks

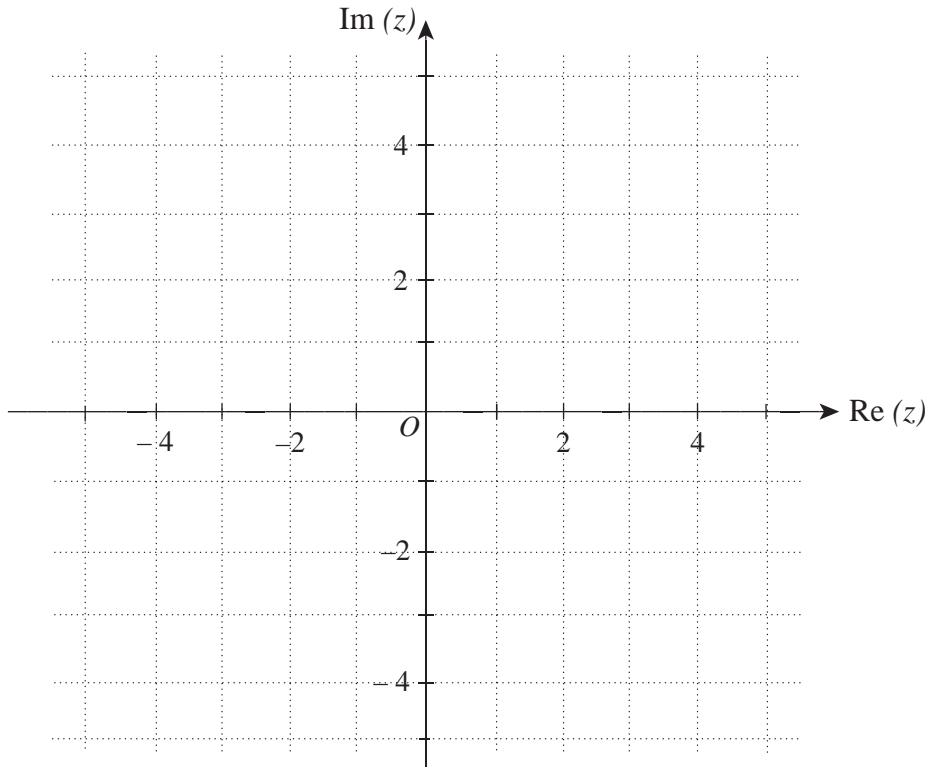
Question 4

- a. Sketch the region of the Argand plane defined by $R = \left\{ z: \text{Arg}(z - 2 + 2i) \leq \frac{3\pi}{4} \right\}$.



2 marks

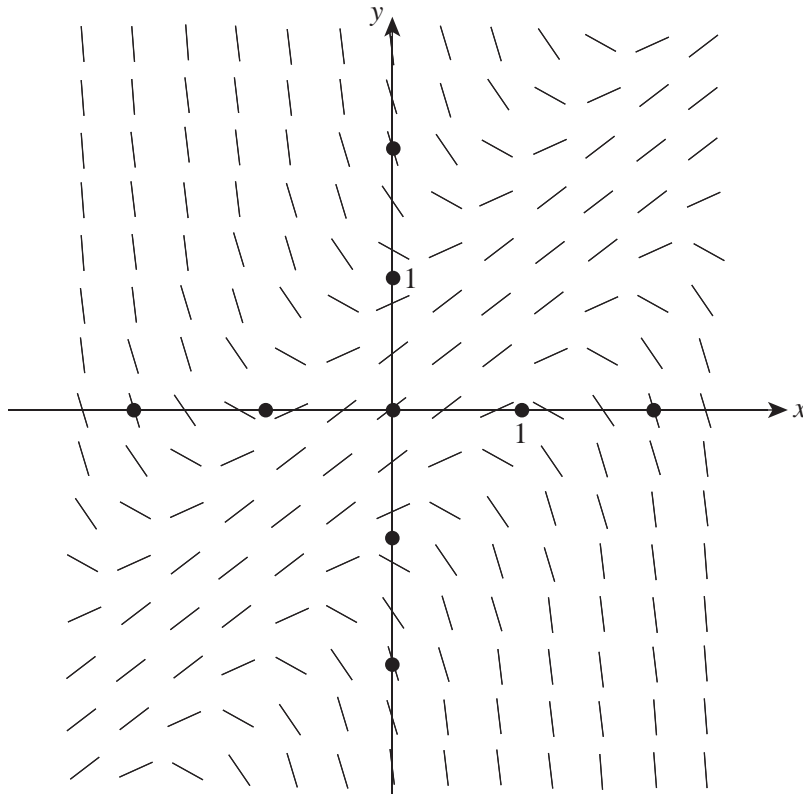
- b. Sketch the region of the Argand plane defined by $T = \{ z: (z + 2i)(\bar{z} - 2i) = 4 \}$.



2 marks

Question 5

The direction field for a differential equation is shown below.



a. On the direction field above, sketch the solution curve with the initial condition $y(0) = 2$.

1 mark

b. The direction field above is for one of the following three differential equations:

(A) $\frac{dy}{dx} = 1 - y^2$

(B) $\frac{dy}{dx} = 1 - (x - y)^2$

(C) $\frac{dy}{dx} = 1 - (x + y)^2$

i. Equation (A) is not correct.

Explain why.

ii. State, with an explanation, which of equations (B) or (C) is correct.

1 + 1 = 2 marks

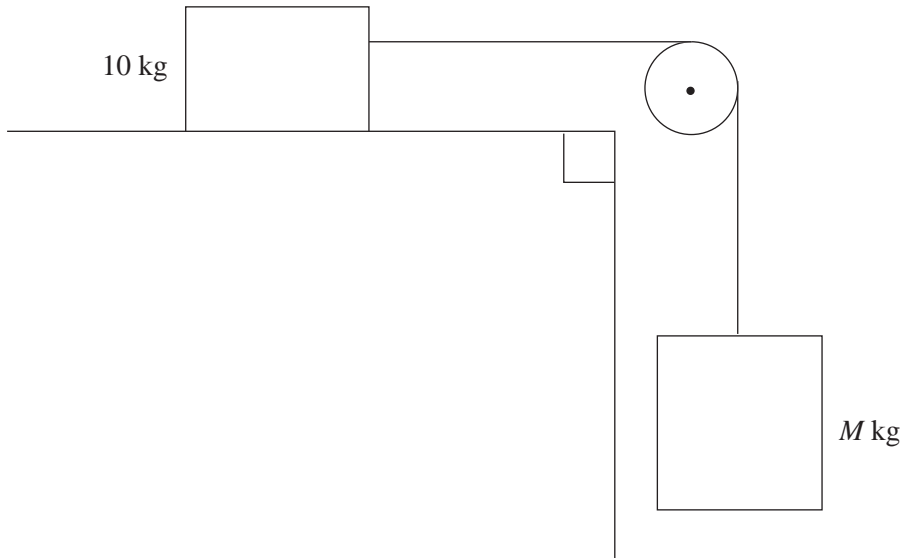
Question 6

Differentiate $x \arctan(x) - \frac{1}{2} \log_e(x^2 + 1)$ and hence evaluate $\int_{-\sqrt{3}}^1 \arctan(x) dx$.

4 marks

Question 7

A block of mass 10 kg sits on a rough horizontal plane. The 10 kg block is connected to a mass of M kg by a light inextensible string, which passes over a frictionless light pulley. The coefficient of friction between the 10 kg mass and the rough surface is 0.2.



- a.** Find the greatest value of M such that the 10 kg mass is just on the point of sliding along the plane.

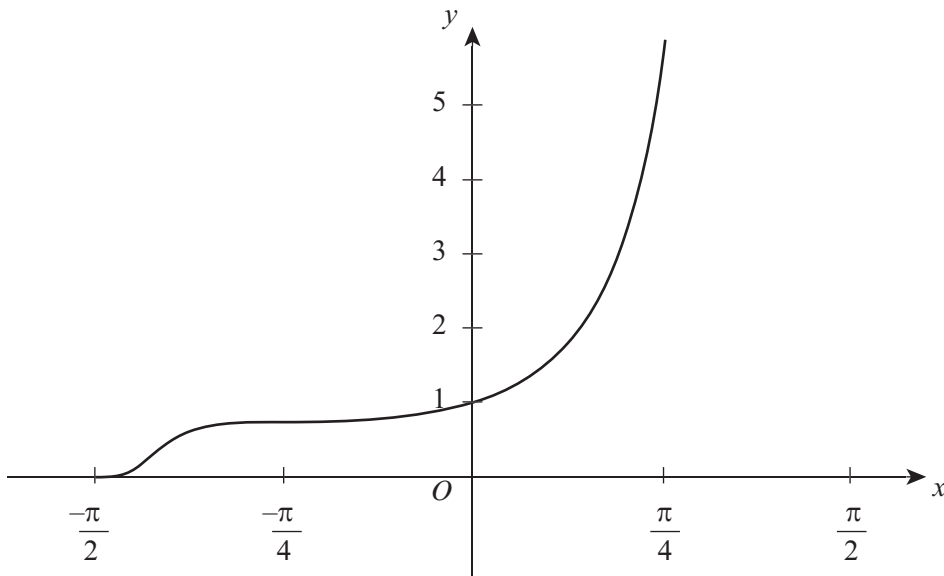
2 marks

- b.** If the value of M is 4, find the acceleration of the 10 kg mass.

2 marks

Question 10

A section of the graph of $f(x) = \frac{e^{\tan(x)}}{1 - \sin^2(x)}$ is shown below.



- a. Determine the area of the region enclosed by the graph of $y = f(x)$, the line $y = 0$ and the lines $x = -\frac{\pi}{4}$ and $x = \frac{\pi}{4}$.

3 marks

- b.** An integral expression, which represents the volume of the solid of revolution formed by rotating the region described in part **a** about the x -axis, can be expressed in the form $V = \pi \int_{-\frac{\pi}{4}}^{\frac{\pi}{4}} e^{k \tan(x)} \sec^m(x) dx$, where $k, m \in \mathbb{Z}$.

Determine k and m .

2 marks

Question 11

Consider the relation $\cos(x) + e^{xy} = 2$.

- a. Find the value of y when $x = \frac{\pi}{2}$.

1 mark

- b. Express $\frac{dy}{dx}$ in terms of y and x .

2 marks

- c. Show that the gradient of the normal at $x = \frac{\pi}{2}$ has the value $\frac{\pi^2}{4\log_e(2) - \pi}$.

2 marks

END OF QUESTION AND ANSWER BOOKLET