

**THE  
HEFFERNAN  
GROUP**

P.O. Box 1180  
Surrey Hills North VIC 3127  
Phone 03 9836 5021  
Fax 03 9836 5025

info@theheffernangroup.com.au  
www.theheffernangroup.com.au

Students Name:.....

## SPECIALIST MATHEMATICS

### TRIAL EXAMINATION 1

**2011**

Reading Time: 15 minutes

Writing time: 1 hour

#### **Instructions to students**

This exam consists of 10 questions.

All questions should be answered.

There is a total of 40 marks available.

The marks allocated to each of the ten questions are indicated throughout.

**Students may not bring any notes or calculators into the exam.**

Where more than one mark is allocated to a question, appropriate working must be shown.

Where an exact answer is required to a question, a decimal approximation will not be accepted.

Unless otherwise indicated, diagrams in this exam are not drawn to scale.

The acceleration due to gravity should be taken to have magnitude  $g \text{ m/s}^2$  where  $g = 9.8$

Formula sheets can be found on pages 12-14 of this exam.

*This paper has been prepared independently of the Victorian Curriculum and Assessment Authority to provide additional exam preparation for students. Although references have been reproduced with permission of the Victorian Curriculum and Assessment Authority the publication is in no way connected with or endorsed by the Victorian Curriculum and Assessment Authority.*

© THE HEFFERNAN GROUP 2011

This Trial Exam is licensed on a non transferable basis to the purchasing school. It may be copied by the school which has purchased it. This license does not permit distribution or copying of this Trial Exam by any other party.

**Question 1**

Let  $f(z) = z^3 + z^2 - 4z + a$ ,  $z \in \mathbb{C}$ .

- a.** If  $z + 3$  is a factor of  $f(z)$ , show that  $a = 6$ .

---

---

---

---

1 mark

- b.** Find all the solutions to the equation  $f(z) = 0$ .

---

---

---

---

---

---

---

---

3 marks

**Question 2**

A family of curves is given by the relation  $kx^2 - 2x^2y + y^3 - 6x = 2$  where  $k \in \mathbb{R}$ .

- a. Find  $\frac{dy}{dx}$  in terms of  $x$ ,  $y$  and  $k$ .

---

---

---

---

---

---

---

---

2 marks

- b. Find the gradient of the curve at the point  $(1,0)$ .

---

---

---

---

---

---

---

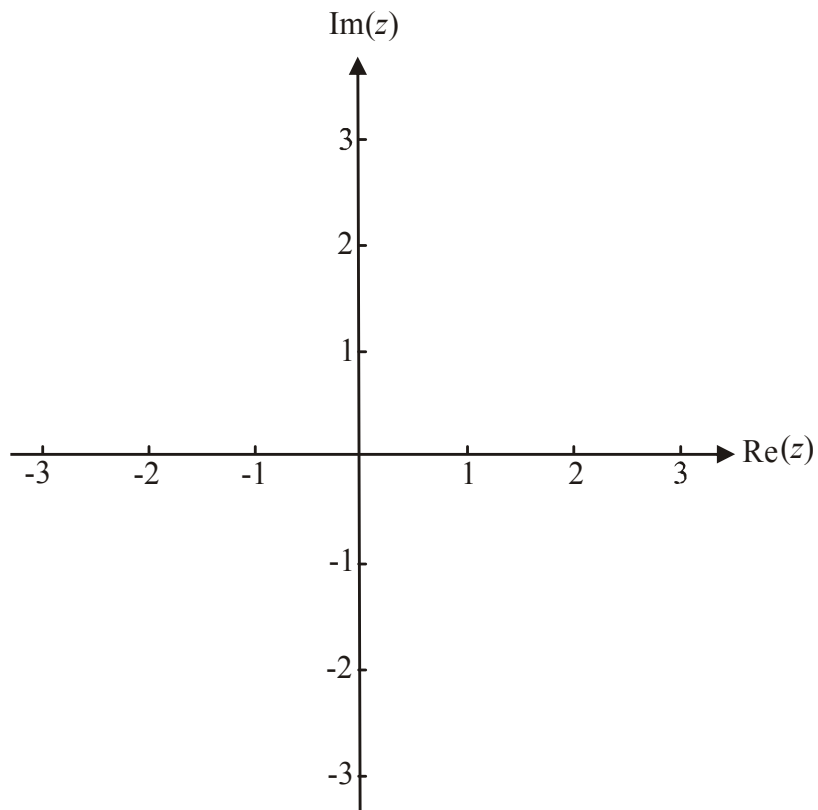
---

2 marks

**Question 3**

On the Argand diagram below, shade the region given by

$$\{z : |z - 1 - i| \leq |z|\} \cap \left\{z : 0 \leq \text{Arg}(z) \leq \frac{\pi}{2}\right\}.$$



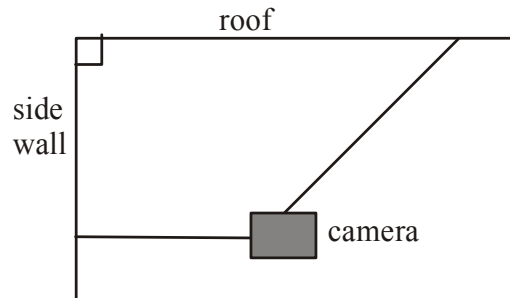
3 marks

**Question 4**

A camera of mass 6kg is attached to and held in position by two taut wires, one of which is suspended from the roof of a sports stadium. The other wire is attached to the side wall of the stadium and is horizontal.

The tension, in newtons, in the horizontal wire is half the tension in the other wire.

- a. Label all the forces acting on the camera on the diagram below.



1 mark

- b. Find the tension in each of the wires.

---



---



---



---



---



---



---

2 marks

- c. Find the angle that the wire suspended from the roof makes with the vertical.

---



---



---

1 mark

**Question 5**

Let  $f(x) = 2 \arctan\left(\frac{2x+1}{3}\right) - 1$

- a.** Find the maximal domain and range of  $f$ .

---

---

---

---

---

2 marks

- b.** Find  $f'(x)$ .

---

---

---

---

---

---

---

2 marks



**Question 7**

a. Find  $\int \frac{1}{x^2 - 2x - 3} dx$ .

---

---

---

---

---

---

---

---

---

---

2 marks

b. Evaluate  $\int_0^1 \frac{x}{2-x} dx$ .

---

---

---

---

---

---

---

---

3 marks





**Question 9**

The position vector of a particle is given by  $\vec{r}(t) = \arccos\left(\frac{t}{5}\right)\vec{i} + 2t\vec{j}$  for  $t \in [0, 5]$ .

- a. Find the Cartesian equation of the path followed by this particle.

---



---



---



---



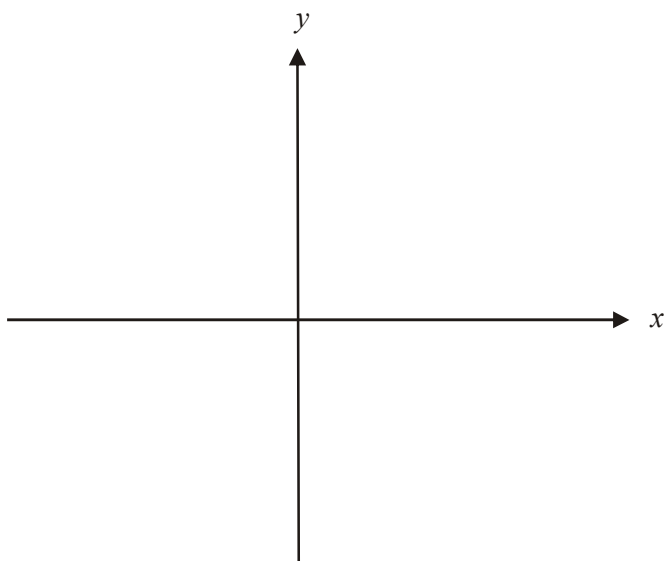
---



---

2 marks

- b. On the set of axes below, sketch the path of the particle.



2 marks

- c. Find the speed of the particle at  $t = 2$ .

---



---



---



---

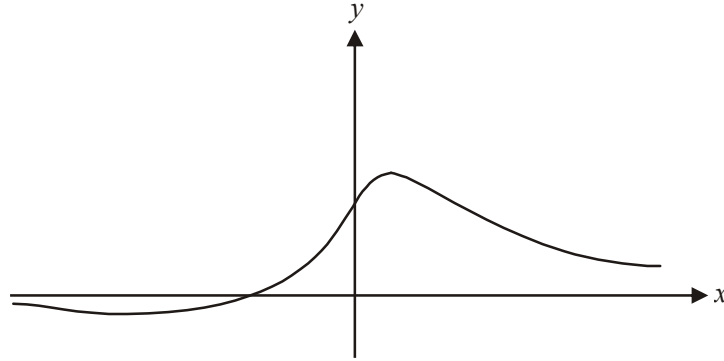


---

2 marks

**Question 10**

The graph of the function  $y = \frac{x+1}{x^2+1}$  is shown below.



Find the area enclosed by the graph of the function and the  $x$  and  $y$  axes. Express your answer in the form  $\frac{\pi}{a} - \ln \sqrt{b}$ , where  $a$  and  $b$  are integers.

---



---



---



---



---



---



---



---



---



---



---

4 marks

## Specialist Mathematics Formulas

### Mensuration

area of a trapezium:	$\frac{1}{2}(a+b)h$
curved surface area of a cylinder:	$2\pi rh$
volume of a cylinder:	$\pi r^2 h$
volume of a cone:	$\frac{1}{3}\pi r^2 h$
volume of a pyramid:	$\frac{1}{3}Ah$
volume of a sphere:	$\frac{4}{3}\pi r^3$
area of a triangle:	$\frac{1}{2}bc \sin A$
sine rule:	$\frac{a}{\sin A} = \frac{b}{\sin B} = \frac{c}{\sin C}$
cosine rule:	$c^2 = a^2 + b^2 - 2ab \cos C$

### Coordinate geometry

ellipse:  $\frac{(x-h)^2}{a^2} + \frac{(y-k)^2}{b^2} = 1$  hyperbola:  $\frac{(x-h)^2}{a^2} - \frac{(y-k)^2}{b^2} = 1$

### Circular (trigonometric) functions

$\cos^2(x) + \sin^2(x) = 1$	
$1 + \tan^2(x) = \sec^2(x)$	$\cot^2(x) + 1 = \operatorname{cosec}^2(x)$
$\sin(x+y) = \sin(x)\cos(y) + \cos(x)\sin(y)$	$\sin(x-y) = \sin(x)\cos(y) - \cos(x)\sin(y)$
$\cos(x+y) = \cos(x)\cos(y) - \sin(x)\sin(y)$	$\cos(x-y) = \cos(x)\cos(y) + \sin(x)\sin(y)$
$\tan(x+y) = \frac{\tan(x) + \tan(y)}{1 - \tan(x)\tan(y)}$	$\tan(x-y) = \frac{\tan(x) - \tan(y)}{1 + \tan(x)\tan(y)}$
$\cos(2x) = \cos^2(x) - \sin^2(x) = 2\cos^2(x) - 1 = 1 - 2\sin^2(x)$	
$\sin(2x) = 2\sin(x)\cos(x)$	$\tan(2x) = \frac{2\tan(x)}{1 - \tan^2(x)}$

function	sin <sup>-1</sup>	cos <sup>-1</sup>	tan <sup>-1</sup>
domain	[-1, 1]	[-1, 1]	R
range	$\left[-\frac{\pi}{2}, \frac{\pi}{2}\right]$	[0, π]	$\left(-\frac{\pi}{2}, \frac{\pi}{2}\right)$

### Algebra (Complex numbers)

$$z = x + yi = r(\cos \theta + i \sin \theta) = r \operatorname{cis} \theta$$

$$|z| = \sqrt{x^2 + y^2} = r$$

$$z_1 z_2 = r_1 r_2 \operatorname{cis}(\theta_1 + \theta_2)$$

$$z^n = r^n \operatorname{cis}(n\theta) \quad (\text{de Moivre's theorem})$$

$$-\pi < \operatorname{Arg} z \leq \pi$$

$$\frac{z_1}{z_2} = \frac{r_1}{r_2} \operatorname{cis}(\theta_1 - \theta_2)$$

*Reproduced with permission of the Victorian Curriculum and Assessment Authority, Victoria, Australia.*

*This formula sheet has been copied in 2011 from the VCAA website [www.vcaa.vic.edu.au](http://www.vcaa.vic.edu.au)  
The VCAA publish an exam issue supplement to the VCAA bulletin.*

**Calculus**

$$\frac{d}{dx}(x^n) = nx^{n-1}$$

$$\frac{d}{dx}(e^{ax}) = ae^{ax}$$

$$\frac{d}{dx}(\log_e(x)) = \frac{1}{x}$$

$$\frac{d}{dx}(\sin(ax)) = a \cos(ax)$$

$$\frac{d}{dx}(\cos(ax)) = -a \sin(ax)$$

$$\frac{d}{dx}(\tan(ax)) = a \sec^2(ax)$$

$$\frac{d}{dx}(\sin^{-1}(x)) = \frac{1}{\sqrt{1-x^2}}$$

$$\frac{d}{dx}(\cos^{-1}(x)) = \frac{-1}{\sqrt{1-x^2}}$$

$$\frac{d}{dx}(\tan^{-1}(x)) = \frac{1}{1+x^2}$$

$$\int x^n dx = \frac{1}{n+1} x^{n+1} + c, n \neq -1$$

$$\int e^{ax} dx = \frac{1}{a} e^{ax} + c$$

$$\int \frac{1}{x} dx = \log_e|x| + c$$

$$\int \sin(ax) dx = -\frac{1}{a} \cos(ax) + c$$

$$\int \cos(ax) dx = \frac{1}{a} \sin(ax) + c$$

$$\int \sec^2(ax) dx = \frac{1}{a} \tan(ax) + c$$

$$\int \frac{1}{\sqrt{a^2-x^2}} dx = \sin^{-1}\left(\frac{x}{a}\right) + c, a > 0$$

$$\int \frac{-1}{\sqrt{a^2-x^2}} dx = \cos^{-1}\left(\frac{x}{a}\right) + c, a > 0$$

$$\int \frac{a}{a^2+x^2} dx = \tan^{-1}\left(\frac{x}{a}\right) + c$$

product rule: 
$$\frac{d}{dx}(uv) = u \frac{dv}{dx} + v \frac{du}{dx}$$

quotient rule: 
$$\frac{d}{dx}\left(\frac{u}{v}\right) = \frac{v \frac{du}{dx} - u \frac{dv}{dx}}{v^2}$$

chain rule: 
$$\frac{dy}{dx} = \frac{dy}{du} \frac{du}{dx}$$

Euler's method: If  $\frac{dy}{dx} = f(x)$ ,  $x_0 = a$  and  $y_0 = b$ ,

$$\text{then } x_{n+1} = x_n + h \text{ and } y_{n+1} = y_n + hf(x_n)$$

acceleration: 
$$a = \frac{d^2x}{dt^2} = \frac{dv}{dt} = v \frac{dv}{dx} = \frac{d}{dx}\left(\frac{1}{2}v^2\right)$$

constant (uniform) acceleration:  $v = u + at \quad s = ut + \frac{1}{2}at^2 \quad v^2 = u^2 + 2as \quad s = \frac{1}{2}(u+v)t$

*Reproduced with permission of the Victorian Curriculum and Assessment Authority, Victoria, Australia.*

*This formula sheet has been copied in 2011 from the VCAA website [www.vcaa.vic.edu.au](http://www.vcaa.vic.edu.au)  
The VCAA publish an exam issue supplement to the VCAA bulletin.*

**Vectors in two and three dimensions**

$$\underline{r} = x \underline{i} + y \underline{j} + z \underline{k}$$

$$|\underline{r}| = \sqrt{x^2 + y^2 + z^2} = r$$

$$\underline{r}_1 \cdot \underline{r}_2 = r_1 r_2 \cos \theta = x_1 x_2 + y_1 y_2 + z_1 z_2$$

$$\dot{\underline{r}} = \frac{d\underline{r}}{dt} = \frac{dx}{dt} \underline{i} + \frac{dy}{dt} \underline{j} + \frac{dz}{dt} \underline{k}$$

**Mechanics**

momentum:  $\underline{p} = m \underline{v}$

equation of motion:  $\underline{R} = m \underline{a}$

friction:  $F \leq \mu N$

*Reproduced with permission of the Victorian Curriculum and Assessment Authority, Victoria, Australia.*

*This formula sheet has been copied in 2011 from the VCAA website [www.vcaa.vic.edu.au](http://www.vcaa.vic.edu.au)  
The VCAA publish an exam issue supplement to the VCAA bulletin.*