

Year 2009

VCE

Mathematical Methods
and
Mathematical Methods
(CAS)

Trial Examination 1



KILBAHA MULTIMEDIA PUBLISHING
PO BOX 2227
KEW VIC 3101
AUSTRALIA

TEL: (03) 9817 5374
FAX: (03) 9817 4334
kilbaha@gmail.com
<http://kilbaha.googlepages.com>

IMPORTANT COPYRIGHT NOTICE

- This material is copyright. Subject to statutory exception and to the provisions of the relevant collective licensing agreements, no reproduction of any part may take place without the written permission of Kilbaha Pty Ltd.
 - The contents of this work are copyrighted. Unauthorised copying of any part of this work is illegal and detrimental to the interests of the author.
 - For authorised copying within Australia please check that your institution has a licence from Copyright Agency Limited. This permits the copying of small parts of the material, in limited quantities, within the conditions set out in the licence.
 - Teachers and students are reminded that for the purposes of school requirements and external assessments, students must submit work that is clearly their own.
 - Schools which purchase a licence to use this material may distribute this electronic file to the students at the school for their exclusive use. This distribution can be done either on an Intranet Server or on media for the use on stand-alone computers.
 - Schools which purchase a licence to use this material may distribute this printed file to the students at the school for their exclusive use.
-
- **The Word file (if supplied) is for use ONLY within the school.**
 - **It may be modified to suit the school syllabus and for teaching purposes.**
 - **All modified versions of the file must carry this copyright notice.**
 - **Commercial use of this material is expressly prohibited.**

**Victorian Certificate of Education
2009**

STUDENT NUMBER

Figures										Letter
Words										

**MATHEMATICAL METHODS
AND
MATHEMATICAL METHOD (CAS)**

Trial Written Examination 1

Reading time: 15 minutes
Total writing time: 1 hour

QUESTION AND ANSWER BOOK

Structure of book

<i>Number of questions</i>	<i>Number of questions to be answered</i>	<i>Number of marks</i>
11	11	40

- Students are permitted to bring into the examination room: pens, pencils, highlighters, erasers, sharpeners, rulers.
- Students are NOT permitted to bring into the examination room: notes of any kind, blank sheets of paper, white out liquid/tape or a calculator of any type.

Materials supplied

- Question and answer book of 14 pages with a detachable sheet of miscellaneous formulas at the end of this booklet.
- Working space is provided throughout the booklet.

Instructions

- Detach the formula sheet from the end of this book during reading time.
- Write your **student number** in the space provided above on this page.
- All written responses must be in English.

Students are NOT permitted to bring mobile phones and/or any other unauthorised electronic devices into the examination room.

Instructions

Answer **all** questions in the spaces provided.
A decimal approximation will not be accepted if an **exact** answer is required to a question.
In questions where more than one mark is available, appropriate working must be shown.
Unless otherwise indicated, the diagrams in this book are **not** drawn to scale.

Question 1

Let $f(x) = \frac{\log_e(2x)}{2x^2}$. Find $f'(x)$.

2 marks

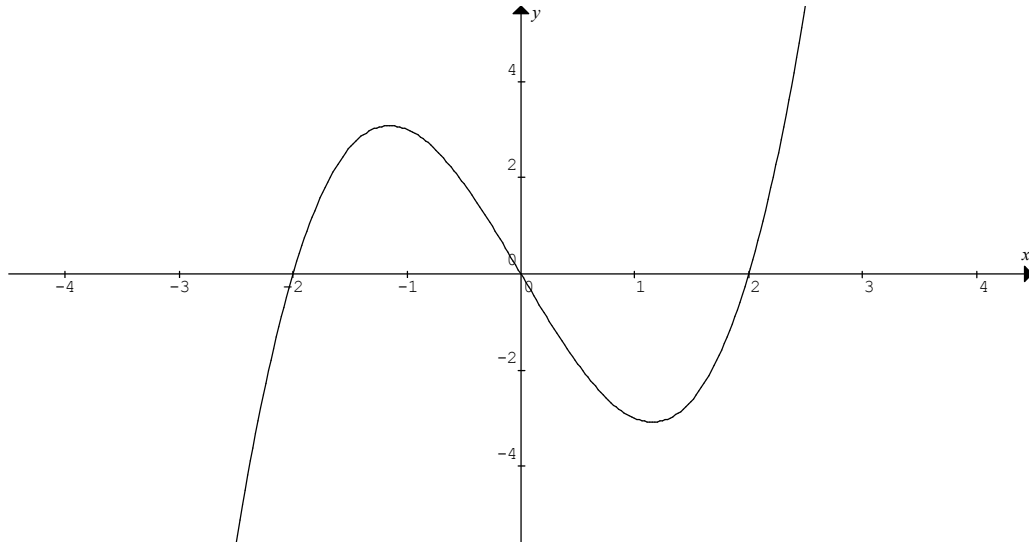
Question 2

Solve the equation $\log_6(x+2) + \log_6(2x-2) = 2$.

2 marks

Question 4

Part of the graph of $y = x^3 - 4x$ is shown below.



- a. On the same set of axes sketch the graph of $y = |x^3 - 4x|$
- b. Find the area of the region between the two curves $y = x^3 - 4x$ and $y = |x^3 - 4x|$ and $x = 0$ and $x = 2$.

1 + 2 = 3 marks

Question 6

A drinking cup contains water to depth of h cm, the volume V cm³ of water in the cup is given by $V = \frac{\pi h}{45}(h^2 + 75h)$ for $0 \leq h \leq 8$.

- a. Find, using calculus, the approximate change in the volume of the water in the cup, when the depth of the water in the cup increases from 1 to 1.01 cm.

2 marks

- b. If the depth of the water is increasing at a rate of 10 cm/minute, find the rate (in cm³ per minute) at which the volume of the water is increasing, when the depth is 1 cm.

2 marks

Question 8

A discrete random variable X has a probability distribution given by

X	1	2
$\Pr(X = x)$	$\sin(k)$	$2\sin^2(k)$

a. Find the possible values of k , given $0 \leq k \leq 2\pi$.

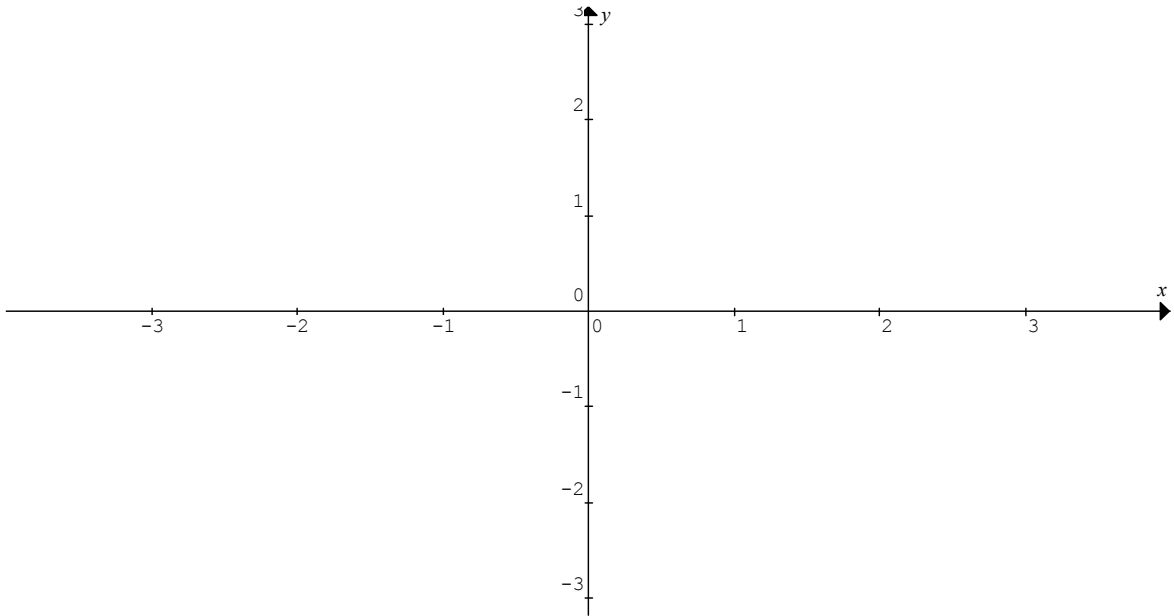
3 marks

b. Find $E(X)$.

1 mark

Question 10

- a. Sketch the graph of function $y = 1 - \frac{4}{(2x+3)^2}$ on the axes below, clearly indicating all axial cuts and equation of any asymptotes.



2 marks

- b. Find the area bounded by the curve $y = 1 - \frac{4}{(2x+3)^2}$, the co-ordinates axes and $x = 1$.

3 marks

Question 11

Ashley has either vegemite or jam on his toast for breakfast every morning. If he has vegemite on his toast one morning, the probability he has jam on his toast the next morning is 0.20. If he has jam on his toast one morning, the probability he has vegemite on his toast the next morning is 0.75. Suppose he has vegemite on his toast on a Monday morning. What is the probability that from Monday to Wednesday inclusive he has vegemite on his toast for breakfast exactly twice?

3 marks

END OF QUESTION AND ANSWER BOOKLET

END OF EXAMINATION

MATHEMATICAL METHODS

Written examination 1

FORMULA SHEET

Directions to students

Detach this formula sheet during reading time.

This formula sheet is provided for your reference.

Mathematical Methods and CAS Formulas

Mensuration

area of a trapezium:	$\frac{1}{2}(a+b)h$	volume of a pyramid:	$\frac{1}{3}Ah$
curved surface area of a cylinder:	$2\pi rh$	volume of a sphere:	$\frac{4}{3}\pi r^3$
volume of a cylinder:	$\pi r^2 h$	area of triangle:	$\frac{1}{2}bc \sin(A)$
volume of a cone:	$\frac{1}{3}\pi r^2 h$		

Calculus

$\frac{d}{dx}(x^n) = nx^{n-1}$	$\int x^n dx = \frac{1}{n+1}x^{n+1} + c, n \neq -1$
$\frac{d}{dx}(e^{ax}) = ae^{ax}$	$\int e^{ax} dx = \frac{1}{a}e^{ax} + c$
$\frac{d}{dx}(\log_e(x)) = \frac{1}{x}$	$\int \frac{1}{x} dx = \log_e x + c$
$\frac{d}{dx}(\sin(ax)) = a \cos(ax)$	$\int \sin(ax) dx = -\frac{1}{a} \cos(ax) + c$
$\frac{d}{dx}(\cos(ax)) = -a \sin(ax)$	$\int \cos(ax) dx = \frac{1}{a} \sin(ax) + c$
$\frac{d}{dx}(\tan(ax)) = \frac{a}{\cos^2(ax)} = a \sec^2(ax)$	

product rule: $\frac{d}{dx}(uv) = u \frac{dv}{dx} + v \frac{du}{dx}$

quotient rule: $\frac{d}{dx}\left(\frac{u}{v}\right) = \frac{v \frac{du}{dx} - u \frac{dv}{dx}}{v^2}$

Chain rule: $\frac{dy}{dx} = \frac{dy}{du} \frac{du}{dx}$

approximation: $f(x+h) \approx f(x) + h f'(x)$

Probability

$\Pr(A) = 1 - \Pr(A')$

$\Pr(A \cup B) = \Pr(A) + \Pr(B) - \Pr(A \cap B)$

$\Pr(A/B) = \frac{\Pr(A \cap B)}{\Pr(B)}$

mean: $\mu = E(X)$

variance: $\text{var}(X) = \sigma^2 = E((X - \mu)^2) = E(X^2) - \mu^2$

probability distribution		mean	variance
discrete	$\Pr(X = x) = p(x)$	$\mu = \sum x p(x)$	$\sigma^2 = \sum (x - \mu)^2 p(x)$
continuous	$\Pr(a < X < b) = \int_a^b f(x) dx$	$\mu = \int_{-\infty}^{\infty} x f(x) dx$	$\sigma^2 = \int_{-\infty}^{\infty} (x - \mu)^2 f(x) dx$