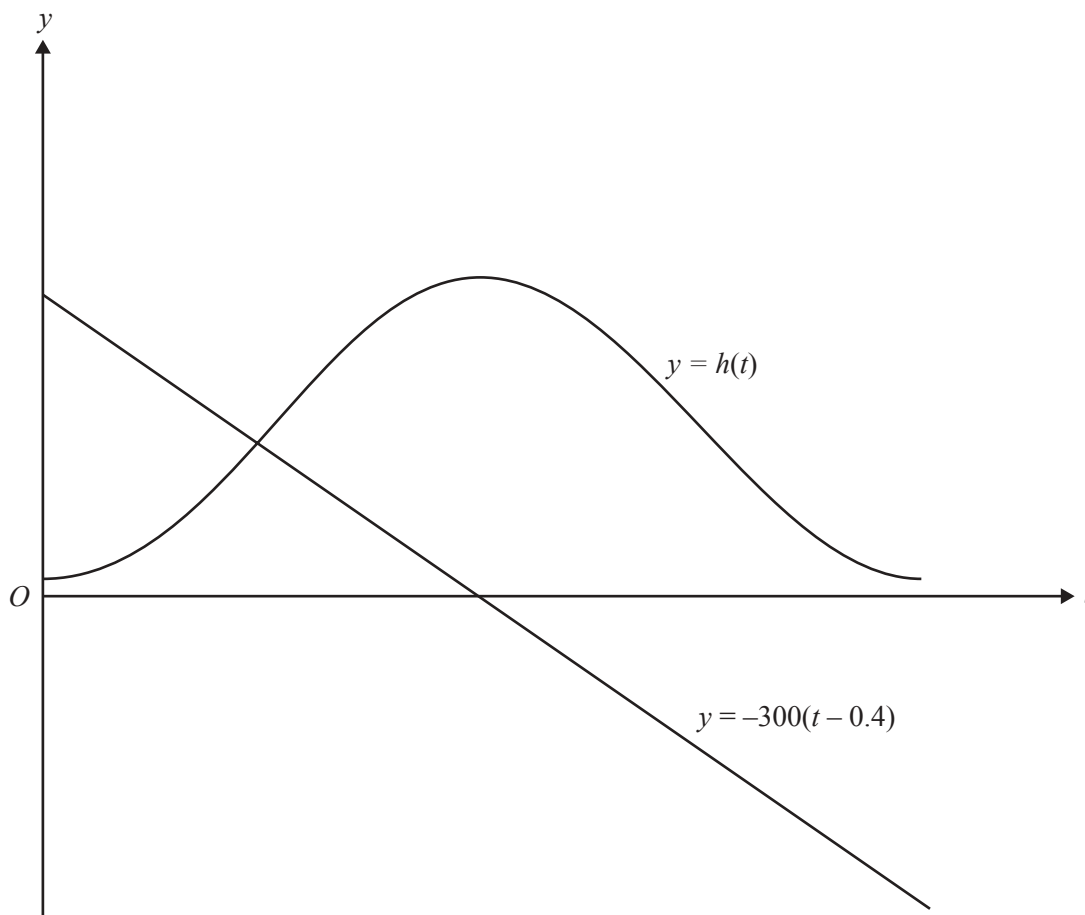


When point P first reaches position Z , that is, its highest point (see diagram page 20), the spider becomes frightened. It drops down from the car on a thread (which remains vertical at all times) at a rate of 5 metres per minute until it reaches the ground.

As it drops, the spider's height $s(t)$ metres above ground level at time t (where t is the time in hours after 1.00 pm) is given by

$$s(t) = h(t) - 300(t - 0.4)$$

- f. The graph of $y = h(t)$ for the first revolution of the Ferris wheel after 1.00 pm and the graph of $y = -300(t - 0.4)$ are shown together on the axes below.
- On the diagram label the local maximum point of the graph of $y = h(t)$ with its coordinates.
 - On the diagram draw a graph which shows the height of the spider above ground level at time t .



- iii. Find, to the nearest minute, the time from when the spider leaves car C to when it reaches the ground.

1 + 2 + 2 = 5 marks

Total 13 marks

MATHEMATICAL METHODS AND MATHEMATICAL METHODS (CAS)

Written examinations 1 and 2

FORMULA SHEET

Directions to students

Detach this formula sheet during reading time.

This formula sheet is provided for your reference.

Mathematical Methods and Mathematical Methods CAS Formulas

Mensuration

area of a trapezium:	$\frac{1}{2}(a + b)h$	volume of a pyramid:	$\frac{1}{3}Ah$
curved surface area of a cylinder:	$2\pi rh$	volume of a sphere:	$\frac{4}{3}\pi r^3$
volume of a cylinder:	$\pi r^2 h$	area of a triangle:	$\frac{1}{2}bc \sin A$
volume of a cone:	$\frac{1}{3}\pi r^2 h$		

Calculus

$\frac{d}{dx}(x^n) = nx^{n-1}$	$\int x^n dx = \frac{1}{n+1} x^{n+1} + c, n \neq -1$
$\frac{d}{dx}(e^{ax}) = ae^{ax}$	$\int e^{ax} dx = \frac{1}{a} e^{ax} + c$
$\frac{d}{dx}(\log_e(x)) = \frac{1}{x}$	$\int \frac{1}{x} dx = \log_e x + c$
$\frac{d}{dx}(\sin(ax)) = a \cos(ax)$	$\int \sin(ax) dx = -\frac{1}{a} \cos(ax) + c$
$\frac{d}{dx}(\cos(ax)) = -a \sin(ax)$	$\int \cos(ax) dx = \frac{1}{a} \sin(ax) + c$
$\frac{d}{dx}(\tan(ax)) = \frac{a}{\cos^2(ax)} = a \sec^2(ax)$	

product rule: $\frac{d}{dx}(uv) = u \frac{dv}{dx} + v \frac{du}{dx}$

quotient rule: $\frac{d}{dx}\left(\frac{u}{v}\right) = \frac{v \frac{du}{dx} - u \frac{dv}{dx}}{v^2}$

chain rule: $\frac{dy}{dx} = \frac{dy}{du} \frac{du}{dx}$

approximation: $f(x+h) \approx f(x) + hf'(x)$

Probability

$\Pr(A) = 1 - \Pr(A')$

$\Pr(A \cup B) = \Pr(A) + \Pr(B) - \Pr(A \cap B)$

$\Pr(A|B) = \frac{\Pr(A \cap B)}{\Pr(B)}$

mean: $\mu = E(X)$

variance: $\text{var}(X) = \sigma^2 = E((X - \mu)^2) = E(X^2) - \mu^2$

probability distribution		mean	variance
discrete	$\Pr(X = x) = p(x)$	$\mu = \sum x p(x)$	$\sigma^2 = \sum (x - \mu)^2 p(x)$
continuous	$\Pr(a < X < b) = \int_a^b f(x) dx$	$\mu = \int_{-\infty}^{\infty} x f(x) dx$	$\sigma^2 = \int_{-\infty}^{\infty} (x - \mu)^2 f(x) dx$

END OF FORMULA SHEET