

Victorian Certificate of Education
2023

SUPERVISOR TO ATTACH PROCESSING LABEL HERE

STUDENT NUMBER Letter

GEOGRAPHY

Written examination

Thursday 9 November 2023

Reading time: 2.00 pm to 2.15 pm (15 minutes)

Writing time: 2.15 pm to 4.15 pm (2 hours)

QUESTION AND ANSWER BOOK

Structure of book

<i>Number of questions</i>	<i>Number of questions to be answered</i>	<i>Number of marks</i>
10	10	80

- Students are permitted to bring into the examination room: pens, pencils, highlighters, erasers, sharpeners, rulers, coloured pencils, water-based pens and markers.
- Students are NOT permitted to bring into the examination room: blank sheets of paper and/or correction fluid/tape.
- No calculator is allowed in this examination.

Materials supplied

- Question and answer book of 15 pages, including **assessment criteria for extended-answer questions** on page 15
- Data book
- Additional space is available at the end of the book if you need extra space to complete an answer.

Instructions

- Write your **student number** in the space provided above on this page.
- All written responses must be in English.

At the end of the examination

- You may keep the data book.

Students are NOT permitted to bring mobile phones and/or any other unauthorised electronic devices into the examination room.

THIS PAGE IS BLANK

DO NOT WRITE IN THIS AREA

Instructions

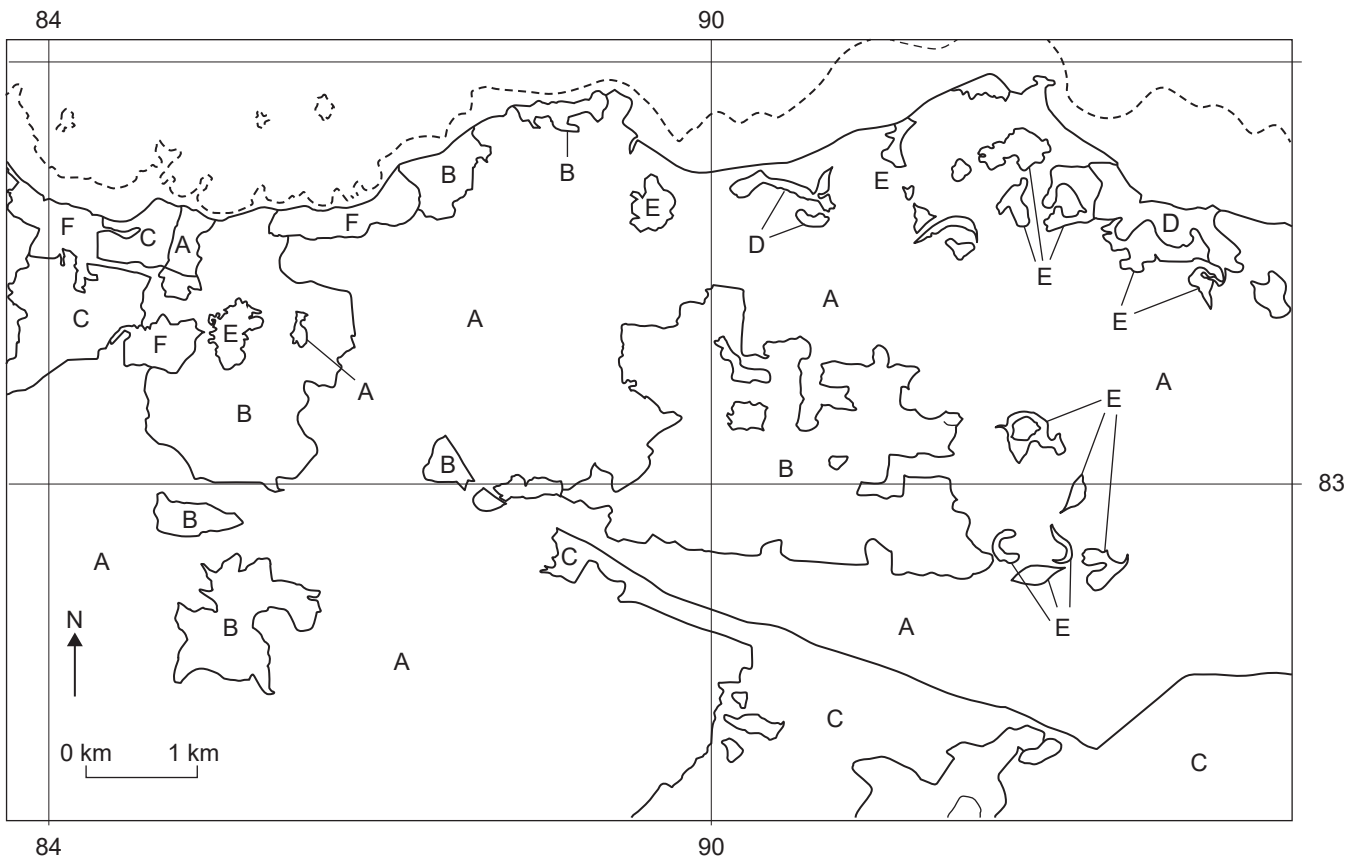
Answer **all** questions in the spaces provided. Refer to the data book as indicated.

Use Figure 1 on pages 2 and 3 of the data book when responding to Question 1.

Question 1 (4 marks)

Before 1950, the area of Papua New Guinea shown in Figure 1 was largely tropical rainforest as well as some mangrove and wetland areas. Local farming produced secondary growth forest but there were no commercial plantation areas. Figure 1a dates from 1973 and includes the expanding town of Kimbe.

Land Categories Map, Du Faure map, Papua New Guinea



Source: adapted from Papua New Guinea, 1:50 000 topographic survey, Central Mapping Bureau, Port Moresby, <trove.nla.gov.au>

- a. Which letter on the Land Categories Map represents a change in land cover from tropical rainforest to commercial plantation? 1 mark

- b. Which letter on the Land Categories Map represents a change in land cover from tropical rainforest to secondary growth? 1 mark

Question 1 – continued
TURN OVER

b. Evaluate the effectiveness or likely effectiveness of a response to **one** of the two impacts of deforestation at the location selected in **part a.**

6 marks

DO NOT WRITE IN THIS AREA

Question 4 (4 marks)

Describe a local response to the impacts discussed in Question 3, on **either** economic activity **or** social conditions.

DO NOT WRITE IN THIS AREA

TURN OVER

Question 5 (10 marks)

- a.** Describe a geospatial technology used for your fieldwork investigation that assisted in answering your research question.

5 marks

- b.** Evaluate how land use change, or predicted change, has impacted, or is likely to impact, the region surrounding your fieldwork area.

5 marks

DO NOT WRITE IN THIS AREA

Use Figure 2 on page 4 of the data book when responding to Question 6.

Question 6 (10 marks)

What are the implications of the total fertility rates in the 21st century for the future structure of population within the following countries?

a. Country A

5 marks

b. Country B

5 marks

DO NOT WRITE IN THIS AREA

Use Figure 3 on pages 6 and 7 of the data book when responding to Question 7.

Question 7 (4 marks)

Background information

Buenos Aires is Argentina's largest urban area, with an estimated 15.4 million residents in 2023. The growth of its informal settlements has resulted from rural-to-urban migration as well as intra-urban movement. Informal settlements can also be referred to as squatter settlements, slum cities, shanty towns and favelas, depending on their location.

Describe the spatial distribution of Buenos Aires' informal settlements.

Question 8 (6 marks)

Explain the interconnection between rural-to-urban migration and the resulting informal settlements that occur globally. Do **not** use the example of Buenos Aires from Question 7.

DO NOT WRITE IN THIS AREA

Assessment criteria for extended-answer questions

The extended-answer questions will be assessed against the following criteria, as appropriate:

- application of geographical knowledge and understanding
- demonstration of geographical skills
- description and application of key geographical concepts
- interpretation and analysis of data and other geographical information

DO NOT WRITE IN THIS AREA

**Victorian Certificate of Education
2023**

GEOGRAPHY
Written examination

Thursday 9 November 2023

Reading time: 2.00 pm to 2.15 pm (15 minutes)

Writing time: 2.15 pm to 4.15 pm (2 hours)

DATA BOOK

Instructions

A question and answer book is provided with this data book.

Refer to the data in this book for each question as indicated in the question and answer book.

The data contained in this book is drawn from real-world case studies.

Students are NOT permitted to bring mobile phones and/or any other unauthorised electronic devices into the examination room.

Figure 1 | Land cover change

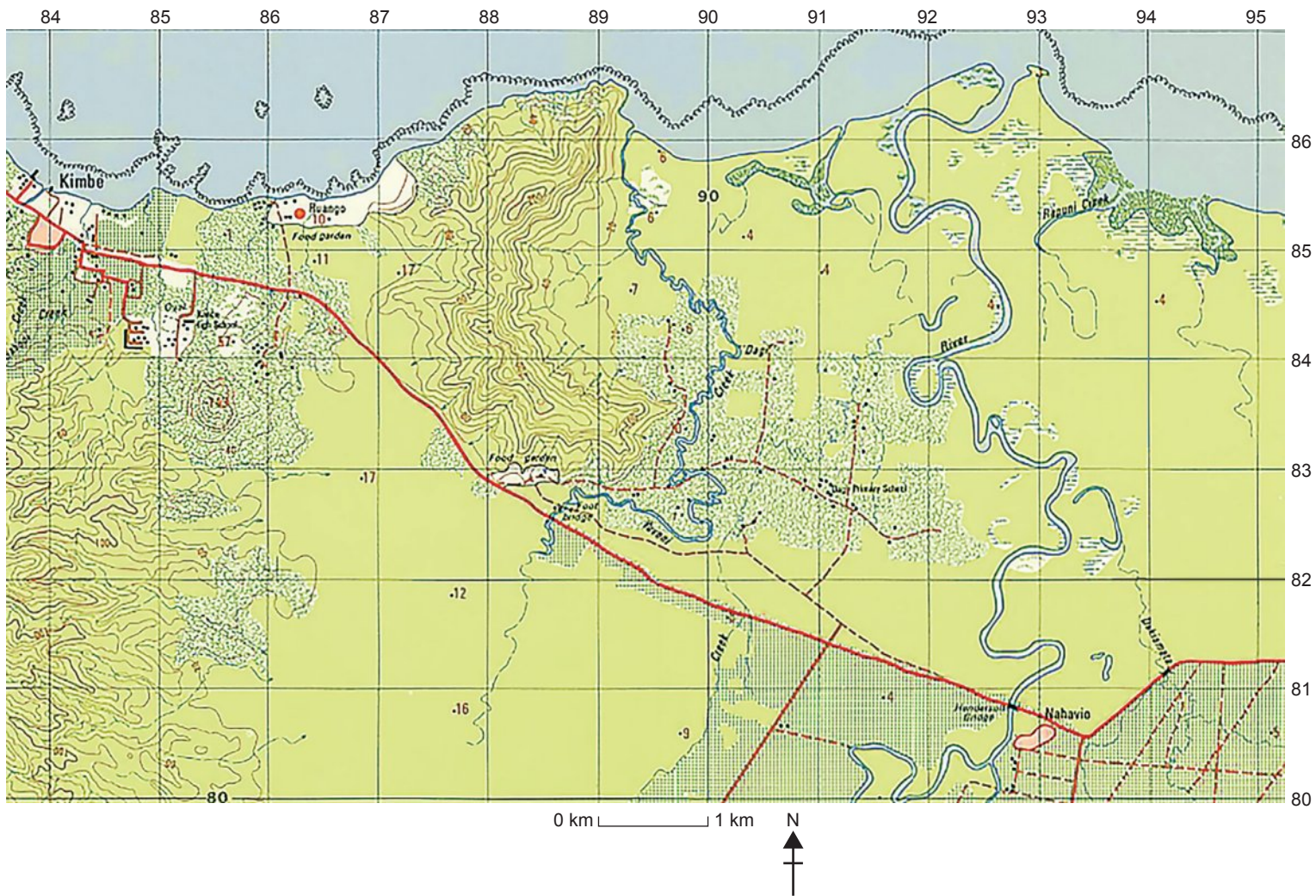
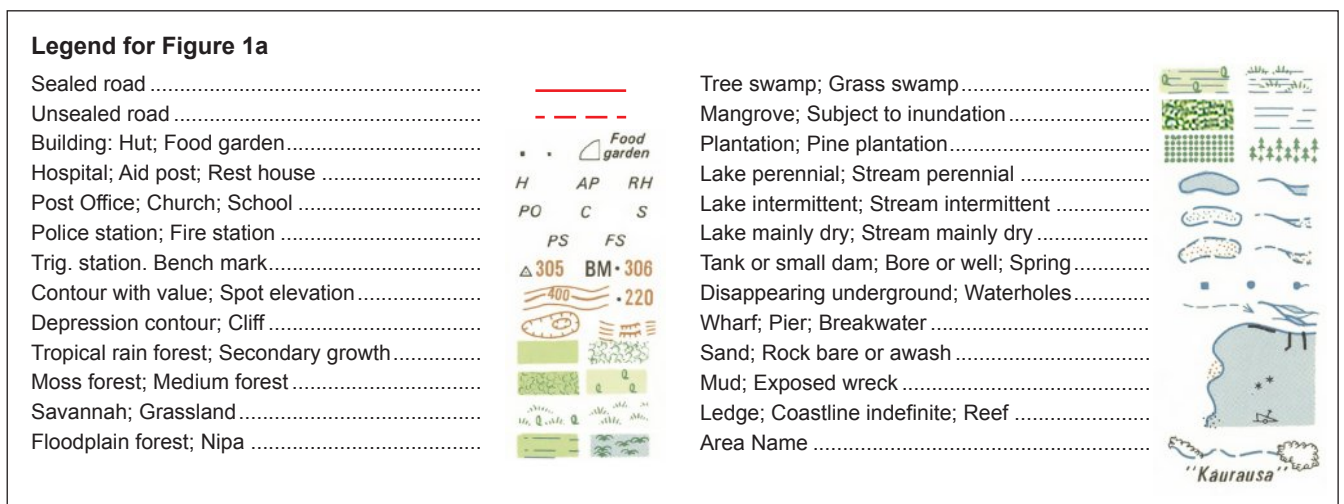


Figure 1a: Extract from Du Faure topographic map, 1:50 000, Papua New Guinea, 1973



Source: adapted from Papua New Guinea, 1:50 000 topographic survey, Central Mapping Bureau, Port Moresby, <trove.nla.gov.au>

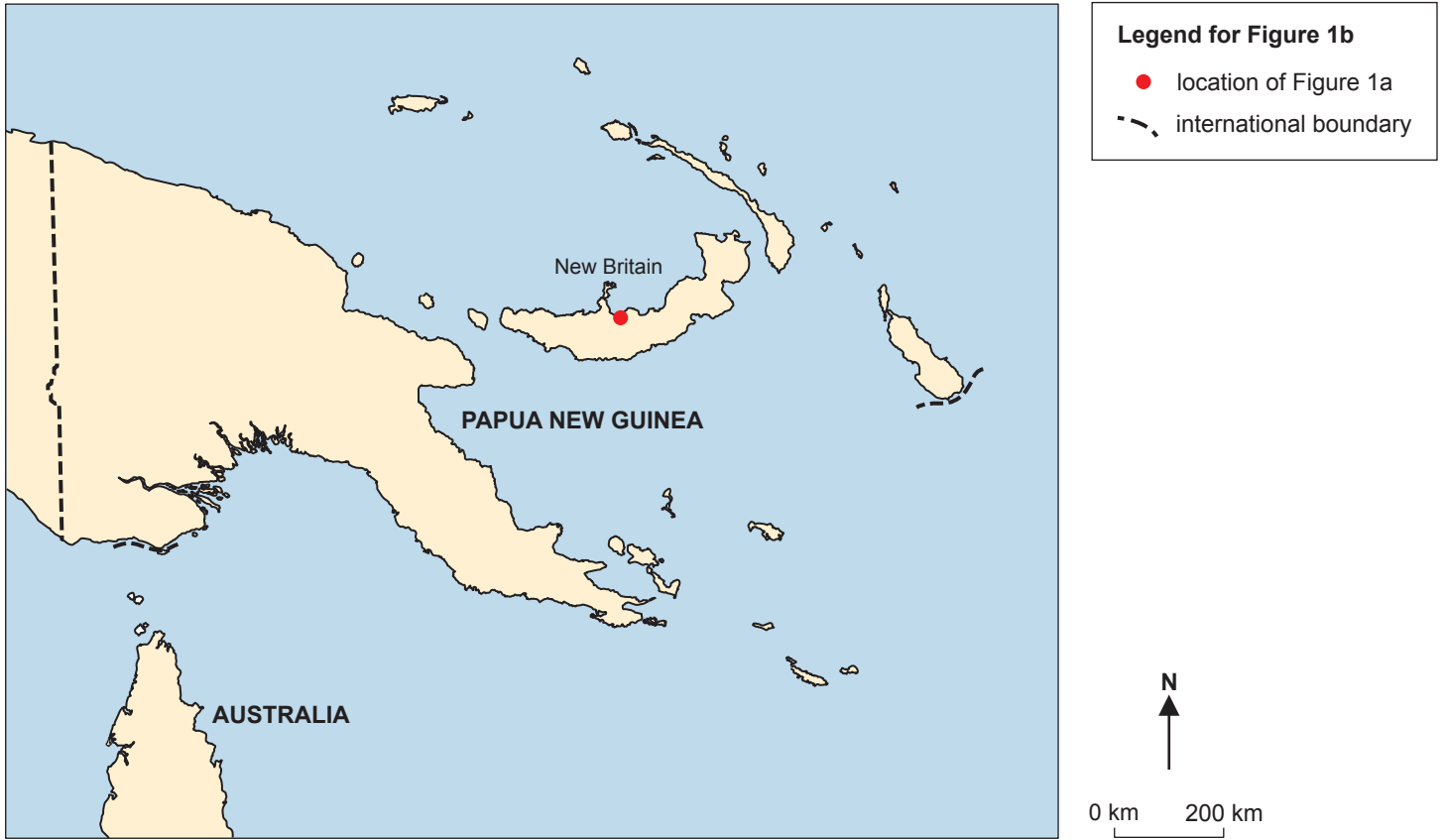


Figure 1b: Location map for Papua New Guinea

Figure 2 | Human population

Year	COUNTRY A		COUNTRY B	
	Total Fertility Rate	Average Life Expectancy	Total Fertility Rate	Average Life Expectancy
1960	3.0	66.86	6.9	38.03
2000	1.4	73.47	6.6	51.86
2005	1.2	74.98	6.0	55.80
2010	1.4	76.20	5.2	60.93
2015	1.3	77.67	4.5	64.61
2020	1.4	78.78	4.2	66.71
2022	1.4	79.11	3.99	67.44

Figure 2: Demographic indicators of Country A and Country B

Source: United Nations World Population Prospects;
World Bank data indicators

CONTINUED OVER PAGE

Figure 3 | Human population

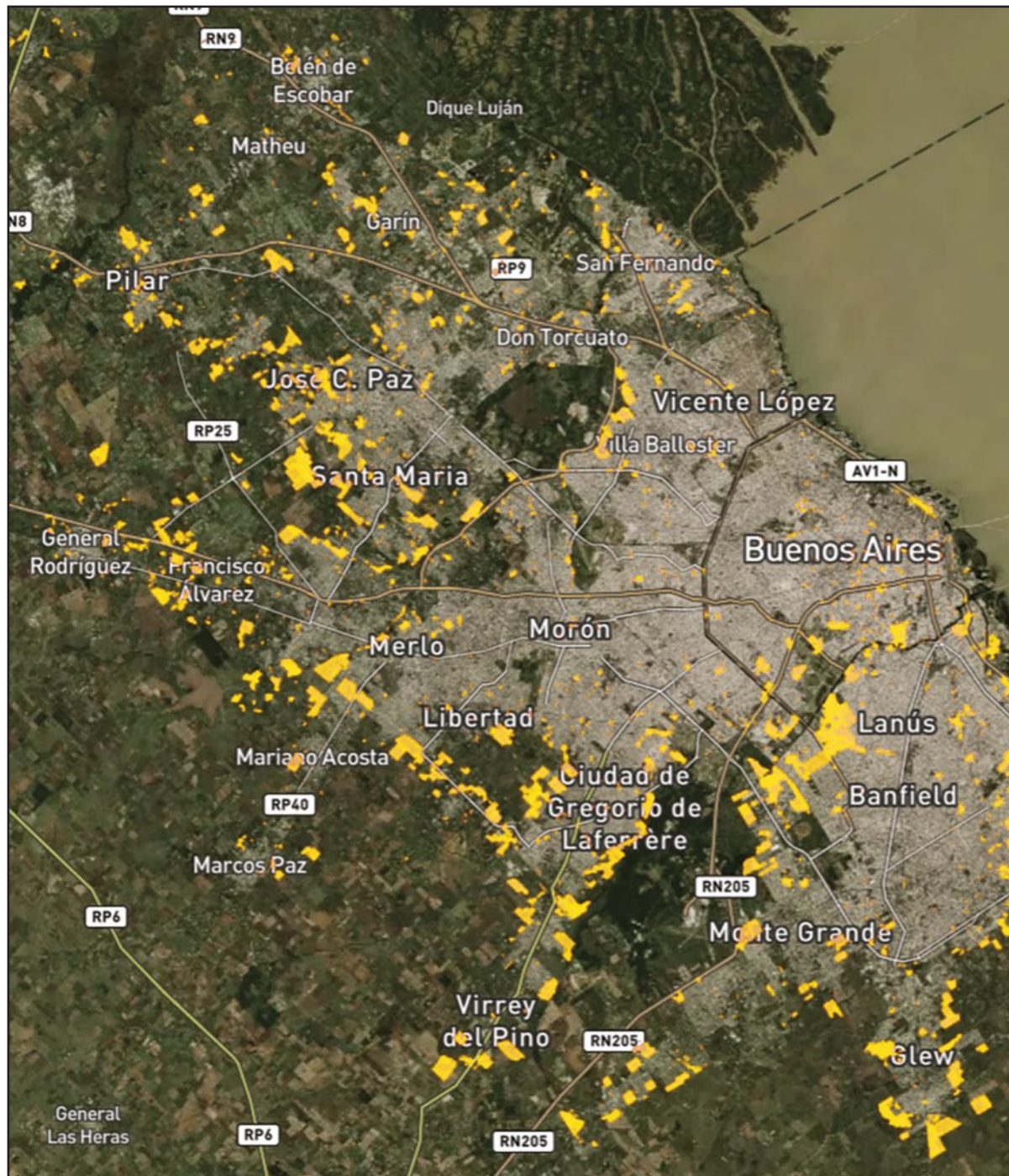
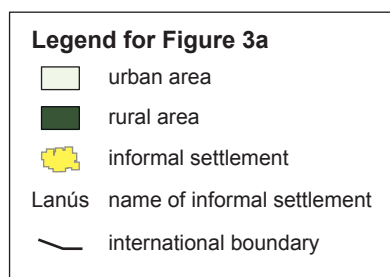


Figure 3a: Satellite image of Buenos Aires, Argentina





Source: Dymaxion Labs, 'Detecting Informal Settlements using Satellite Imagery and Convolutional Neural Networks', medium.com, <blog.goodaudience.com>, original: Dymaxion Labs (https://ap-latam.dymaxionlabs.com/en/map?id=argentina-buenos_aires)

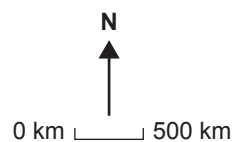


Figure 3b: Location map for Buenos Aires, Argentina

Legend for Figure 3b

- location of Buenos Aires
- - - international boundary