

Student Name: _____



**Geography Teachers'
Association of Victoria Inc.**
Reg No: A 003 050 5Z
ABN: 65 550 382 751

STUDENT NUMBER Letter

GEOGRAPHY

Trial Examination Paper, 2023

Reading time: 15 minutes
Writing time: 2 hours

QUESTION AND ANSWER BOOK

Structure of Book

<i>Number of questions</i>	<i>Number of questions to be answered</i>	<i>Number of marks</i>
10	10	80

- Students are permitted to bring into the examination room: pens, pencils, highlighters, erasers, sharpeners, rulers, coloured pencils, water-based pens and markers.
- Students are NOT permitted to bring into the examination room: blank sheets of paper and/or correction fluid/tape.
- No calculator is allowed in this examination.

Materials supplied

- Question and answer sheets of 12 pages.
- Data book.
- Additional space is available at the end of the book if you need extra paper to complete an answer.

Instructions

- Answer all questions.
- Questions should be answered in this book.
- All written responses must be in English.

Students are NOT permitted to bring mobile phones and/or any other unauthorised electronic devices into the examination room.

Instructions

Answer **all** questions in the spaces provided. Refer to the data book as indicated.

Use Figure 1 on page 2 of the data book when responding to Question 1.

Question 1 (9 marks)

- a.** Describe the changes in the distribution and extent of deforested areas in Malawi between 2009 and 2015.

4 marks

- b.** With reference to Figure 1, outline how remote sensing can be a useful tool in assessing and managing forest cover loss.

2 marks

- c.** Evaluate the effectiveness of a geospatial technology in the management of land cover change at a selected location.

3 marks

Use Figure 2 and Figure 3 on pages 4–5 of the data book when responding to Question 2.

Question 2 (6 marks)

- a.** Identify the region of glaciers which contribute the most to domestic water use in South America 1 mark

- b.** Distinguish between the country where glacial melt is most heavily utilised as a source of domestic water and the country where glacial melt is used by the largest population. Use data to support your response. 2 marks

- c.** Analyse the degree of interconnection between long glacier length and substantial contribution of glacier melt water to domestic uses in South America. 3 marks

Question 3 (8 marks)

a. Predict how anthropogenic climate change is impacting glaciation. Refer to a specific location in your response.

4 marks

b. The economic and social impacts of melting ice sheets and glaciers are often closely interconnected. Explain how this can occur using examples from a specific location you have studied.

4 marks

Question 5 (9 marks)

a. State the location of your Unit 3 fieldwork study.

No marks allocated

b. Outline the process of the land use change at your fieldwork study site and explain a social, economic or environmental reason for the change.

3 marks

c. Describe how two geographic characteristics have influenced the process of land use change at your fieldwork location.

6 marks

Question 6 (6 marks)

Explain the interconnection between two factors that contribute to population change in a country with a growing population.

6 marks

Use Figures 4a, 4b and 4c on pages 6–7 of the data book when responding to Question 7.

Question 7 (8 marks)

a. Describe the spatial association between population density and healthcare facilities in Angola. Include at least two examples to support your response.

4 marks

b. Angola wants to build two new maternal health clinics to cater for its growing population. Suggest a location for each of the two proposed maternal health clinics and justify your decision.

4 marks

Question 8 (17 marks)

a. Name a country with an ageing population you have studied this year. No marks allocated

b. Outline the nature of a population trend in the above country. Explain how it fits into their world regional context. 3 marks

c. Analyse the significance of a population issue and associated challenge based on the trend outlined in question 8b. 6 marks

d. Evaluate the effectiveness of a strategy developed in response to the issue and challenge identified in question 8c.

8 marks

Use Figure 5 on page 8 of the data book when responding to Question 9.

Question 9 (9 marks)

- a. Some demographers claim that Country X is in Stage 4 of the demographic transition model (DTM). Provide one piece of quantified evidence from Figure 5 to support this claim. 2 marks

- b. With reference to the five-stage demographic transition model, explain both the relevance and limitations of such modelling. 4 marks

Question 10 (3 marks)

- Suggest the impact migration might have on a country’s population structure. Include one example to support your response. 3 marks



**Geography Teachers'
Association of Victoria Inc.**
Reg No: A 003 050 5Z
ABN: 65 550 382 751

GEOGRAPHY

Trial Examination Paper, 2023

EXAM

DATA BOOK

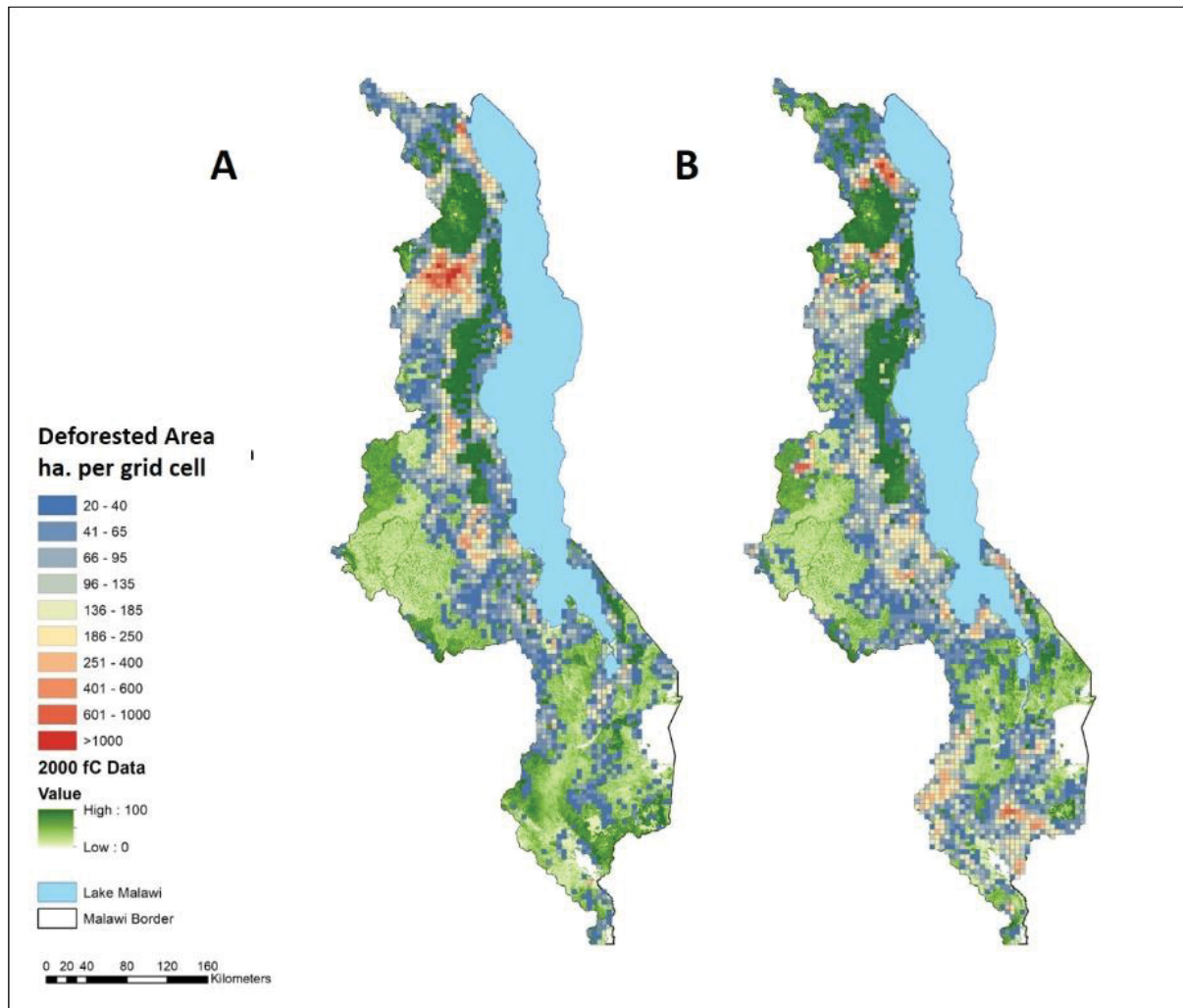
Directions to students

- A question and answer book is provided with this data book.
- Refer to the data in this book for each question as indicated in the Question and Answer book.
- The data contained in this book is drawn from current real world case studies.

Students are NOT permitted to bring mobile phones and/or any other unauthorised electronic devices into the examination room.

FIGURE 1 Changing the land

Figure 1. Mapped areas of deforestation in Malawi, (A) 2000 to 2009 and (B) 2010 to 2015

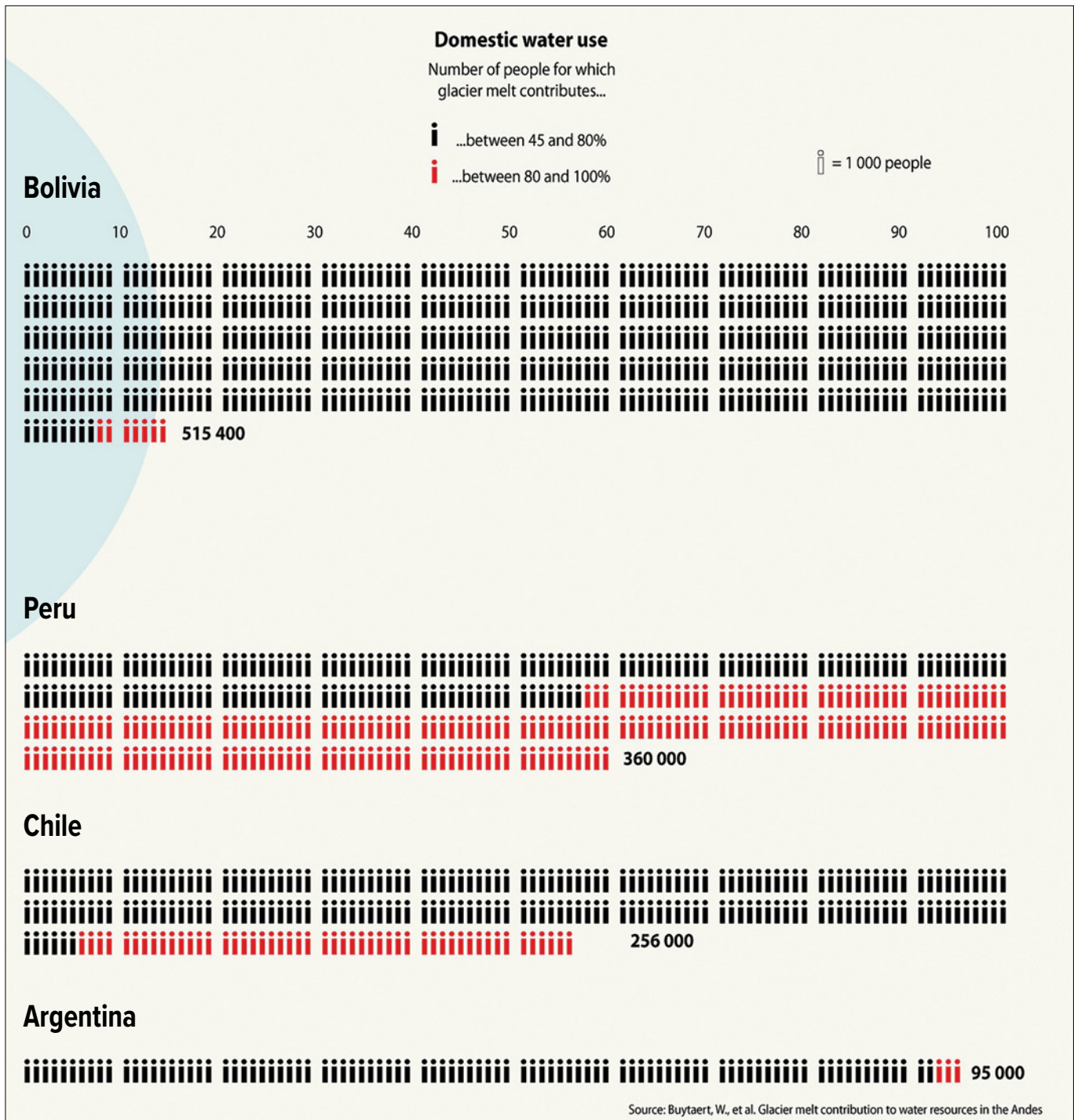


SOURCE: © 2021 Skole DL, Samek JH, Mbow C, Chirwa M, Ndalowa D, Tumeo T, Kachamba D, Kamoto J, Chioza A, Kamangadazi F. 'Direct Measurement of Forest Degradation Rates in Malawi: Toward a National Forest Monitoring System to Support REDD+' *Forests*. 2021; 12(4):426. Licensee MDPI, Basel, Switzerland. (Licensed under CC BY 4.0) <https://doi.org/10.3390/f12040426>

NO DATA ON THIS PAGE

FIGURE 2 Changing the land

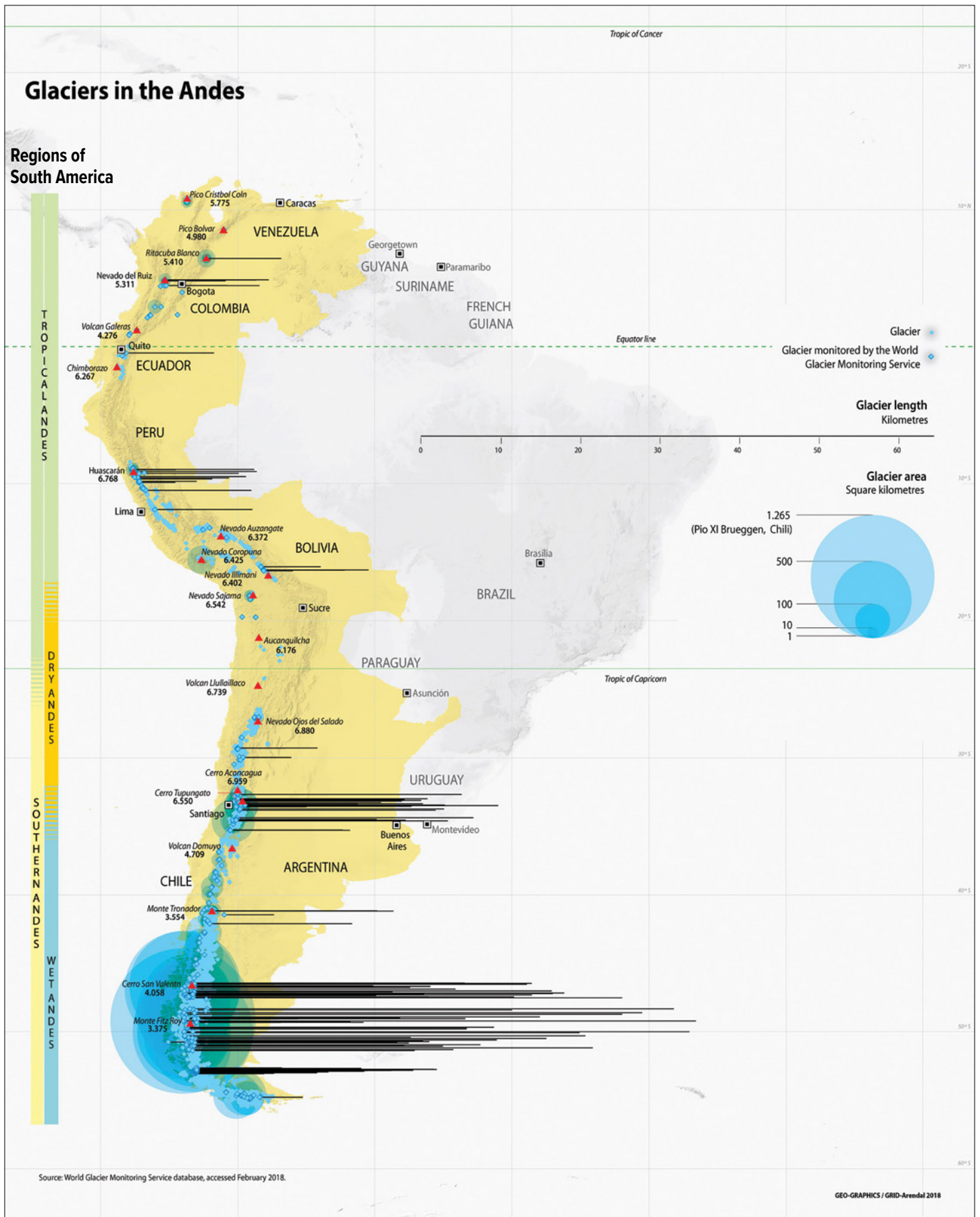
Figure 2. Contribution of glacier melt to domestic water use and irrigated area
During a month with maximal glacier melt contribution, 2019



SOURCE: © Riccardo Pravettoni/GRID-Arendal [From collection: The Andean Glacier and Water Atlas: The Impact of Glacier Retreat on Water Resources. UNESCO and GRID-Arendal, 2019]

FIGURE 3 Changing the land

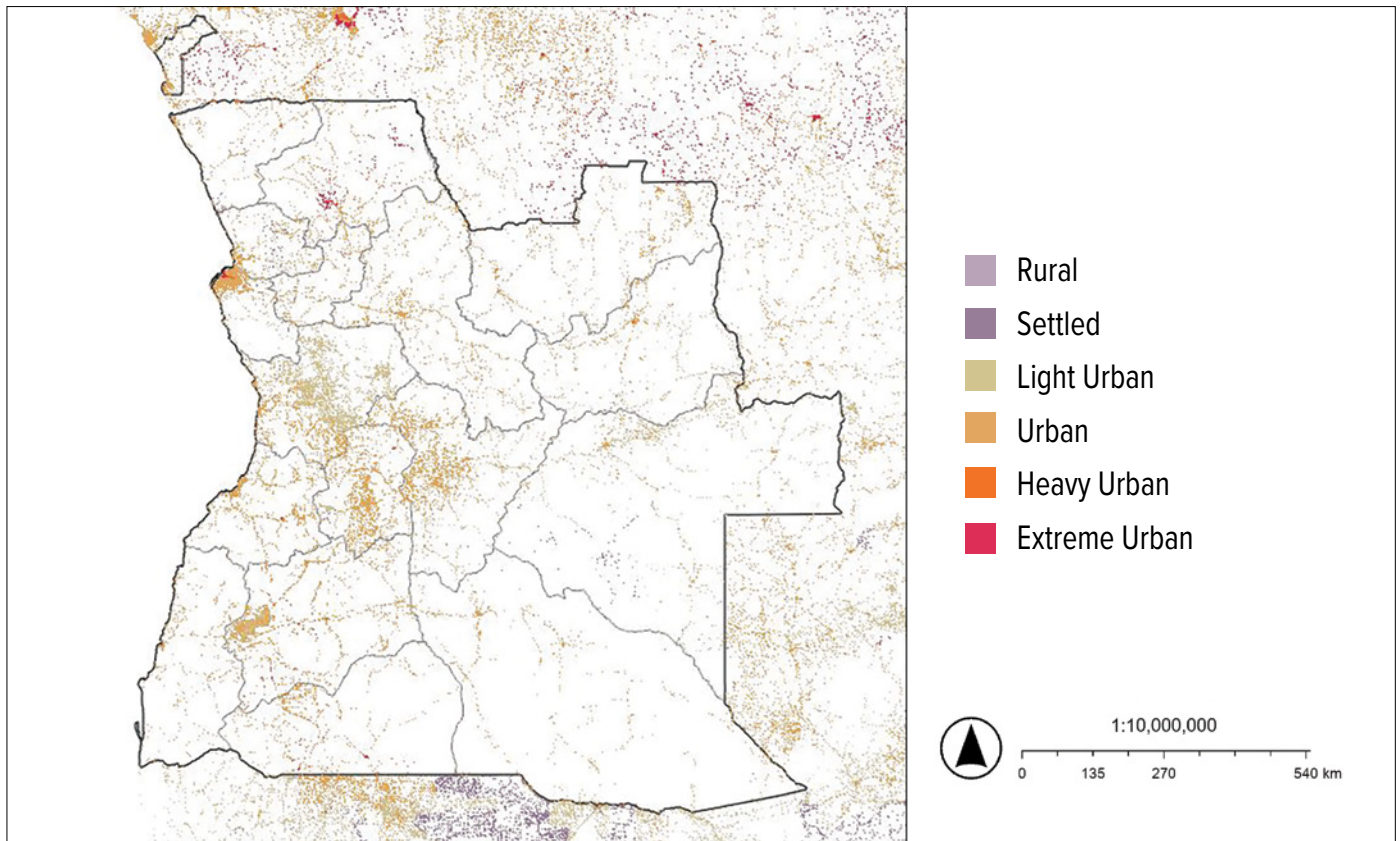
Figure 3. Glaciers in the Andes, 2019



SOURCE: © Riccardo Pravettoni/GRID-Arendal [From collection: The Andean Glacier and Water Atlas: The Impact of Glacier Retreat on Water Resources. UNESCO and GRID-Arendal, 2019]

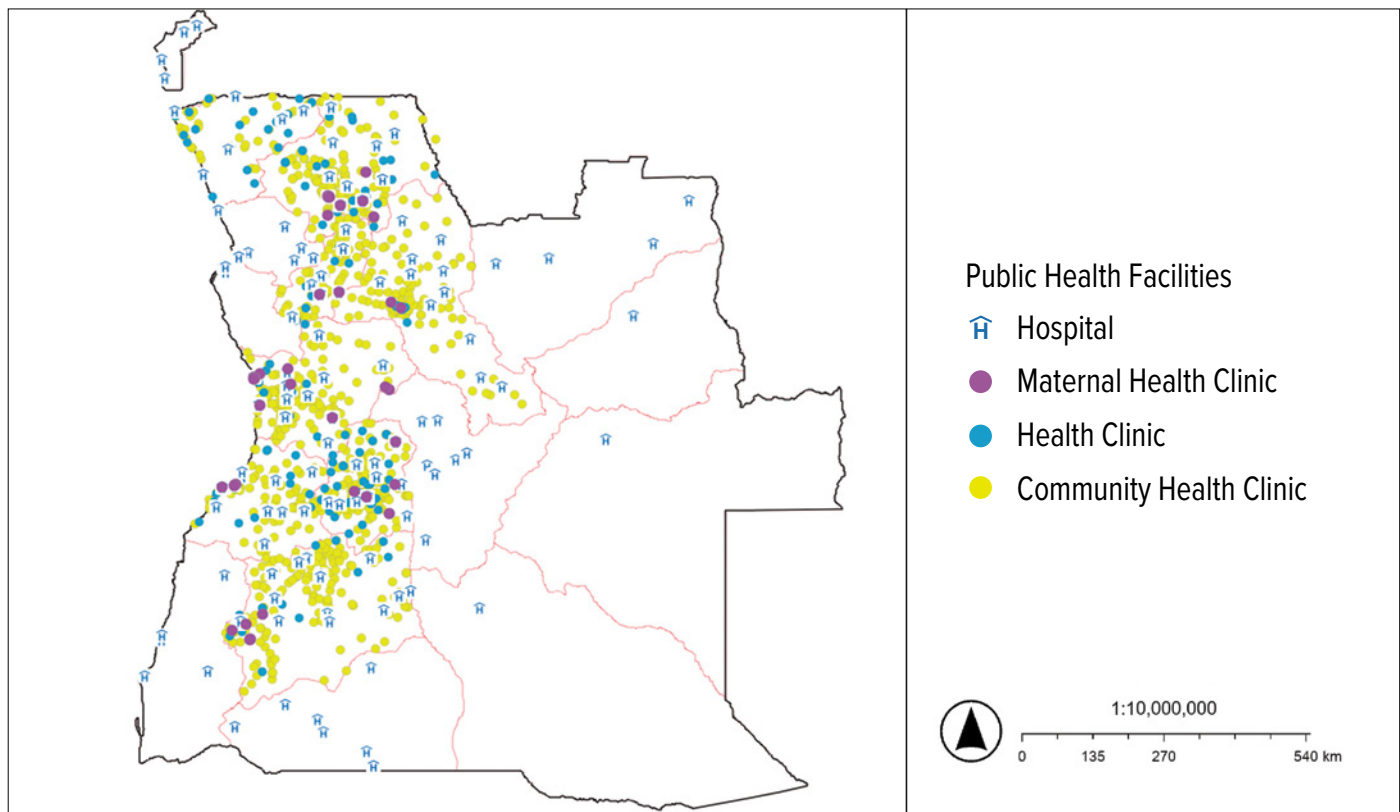
FIGURE 4 Human population

Figure 4a. Angola, Population density, 2016



SOURCE: Esri Living Atlas

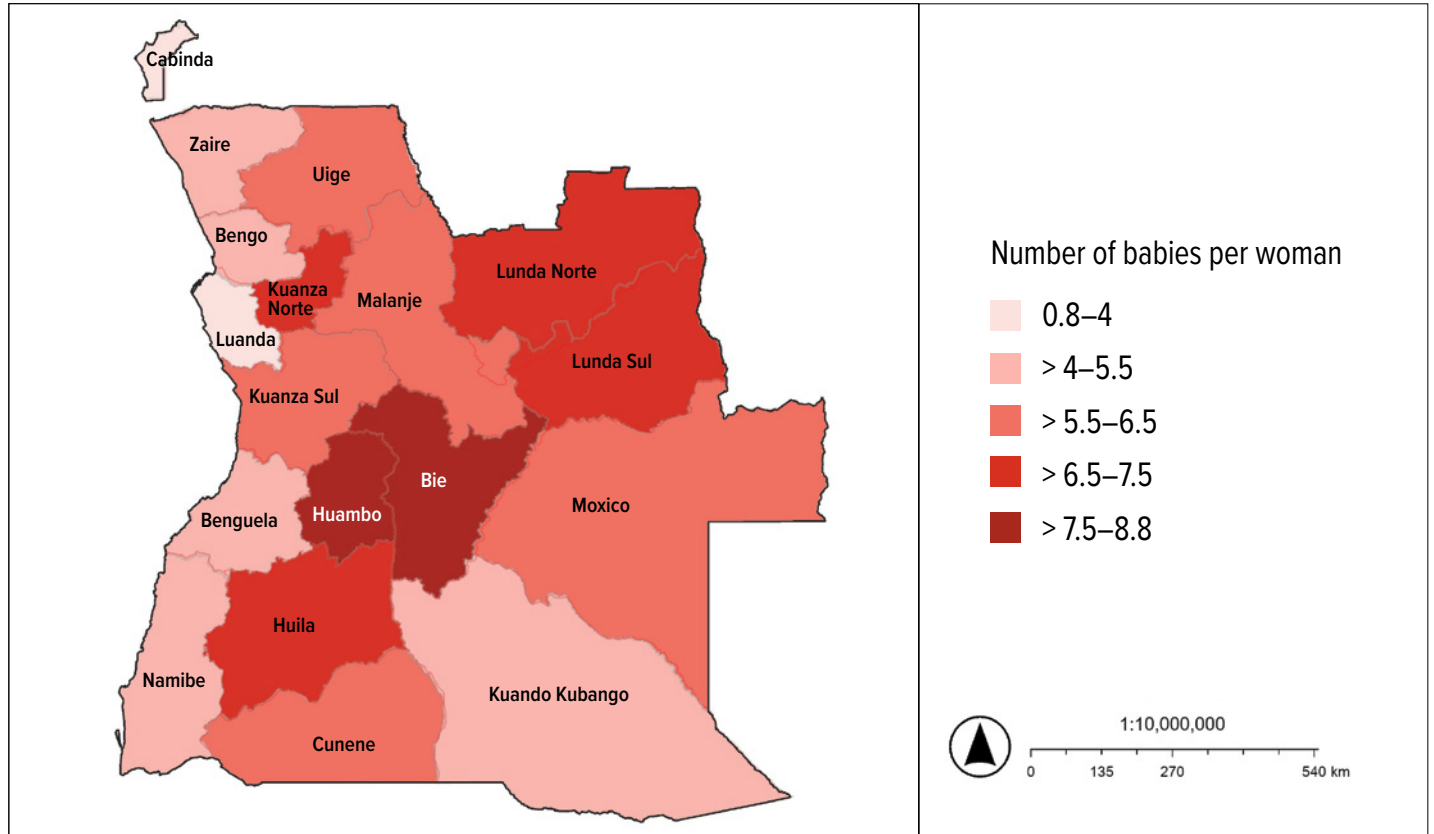
Figure 4b. Angola, Location of healthcare facilities, 2021



DATA SOURCE: Population Health Unit, Kenya Medical Research Institute - Wellcome Trust Research Programme

FIGURE 4 Human population

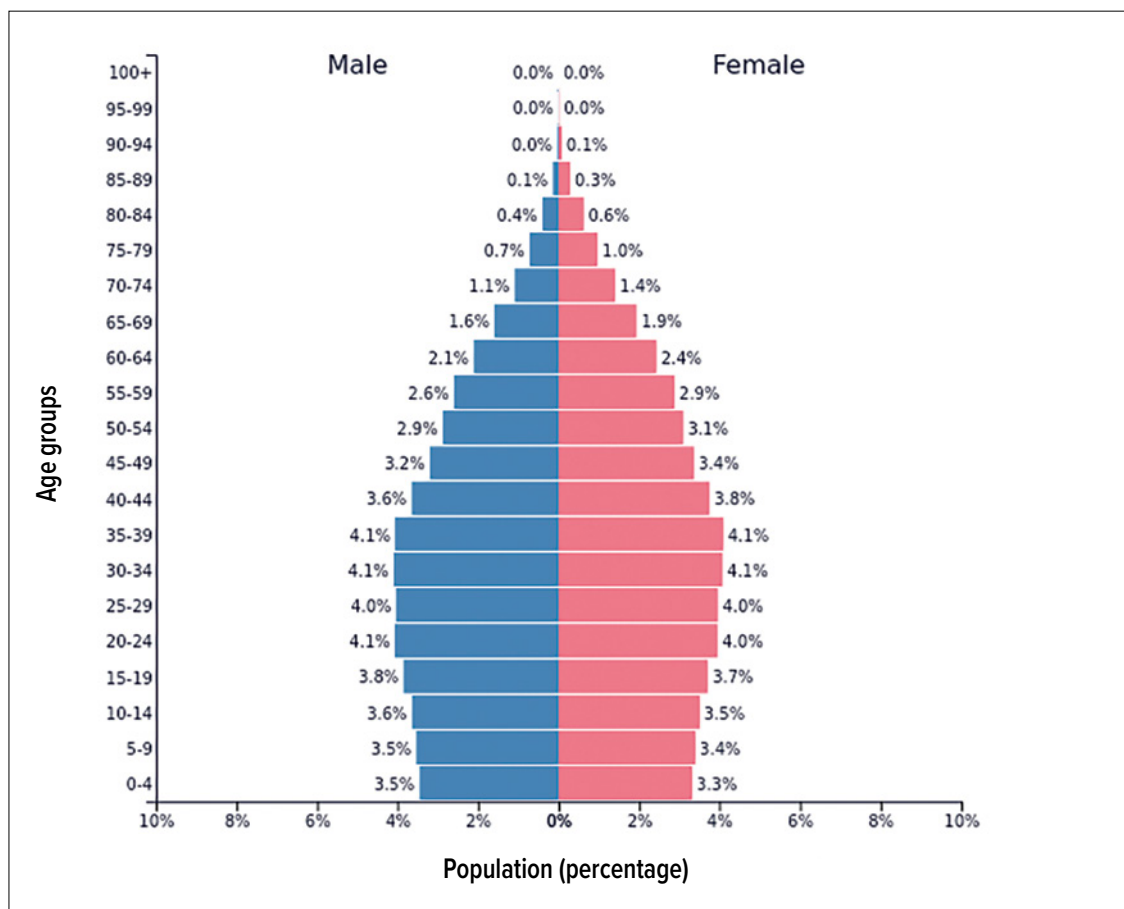
Figure 4c. Angola, Total fertility rate by province, 2022



DATA SOURCE: DHS, UNFPA 2022

FIGURE 5 Human population

Figure 5. Population Pyramid, Country X, 2023



SOURCE: © 2023 by PopulationPyramid.net (Licensed under CC BY 3.0 IGO)

Editorial Notes

Date of publication: June 2023

IMPORTANT: This trial examination paper has been compiled independently of the Victorian Curriculum and Assessment Authority and does not in any way reflect the opinions or endorsement of the organisation. Questions and content should be treated in the context of the trial examination being only a product of the GTAV's interpretation of appropriate content and format.