

**THE  
HEFFERNAN  
GROUP**

Student Name.....

P.O. Box 1180  
Surrey Hills North VIC 3127  
Phone 03 9836 5021  
Fax 03 9836 5025  

---

info@theheffernangroup.com.au  
www.theheffernangroup.com.au

## **FURTHER MATHEMATICS**

### **TRIAL EXAMINATION 1**

**2009**

Reading Time: 15 minutes  
Writing time: 1 hour 30 minutes

#### **Instructions to students**

This exam consists of Section A and Section B.  
Section A contains 13 multiple-choice questions from the core, 'Data Analysis'.  
Section A is compulsory and is worth 13 marks.  
Section B consists of 6 modules each containing 9 multiple-choice questions. You should choose 3 of these modules and answer every question in each of your chosen modules.  
Each of the modules is worth 9 marks.  
Section B begins on page 8 of this exam.  
There is a total of 40 marks available for this exam.  
Unless otherwise stated the diagrams in this exam are not drawn to scale.  
Students may bring one bound reference into the exam.  
An approved graphics or CAS calculator may be used in the exam.  
An answer sheet appears on page 37 of this exam.  
Formula sheets can be found on pages 35 and 36 of this exam.

*This paper has been prepared independently of the Victorian Curriculum and Assessment Authority to provide additional exam preparation for students. Although references have been reproduced with permission of the Victorian Curriculum and Assessment Authority, the publication is in no way connected with or endorsed by the Victorian Curriculum and Assessment Authority.*

**© THE HEFFERNAN GROUP 2009**

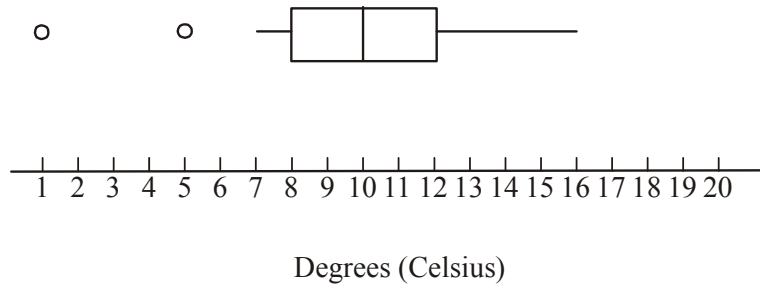
This Trial Exam is licensed on a non transferable basis to the purchasing school. It may be copied by the school which has purchased it. This license does not permit distribution or copying of this Trial Exam by any other party.

**SECTION A****CORE – Data Analysis**

This section is compulsory.

*The following information relates to questions 1 and 2.*

The distribution of the minimum overnight temperature, in °C, in a town during Autumn is displayed on the boxplot below.

**Question 1**

The range of the distribution is

- A. 4
- B. 5
- C. 7
- D. 10
- E. 15

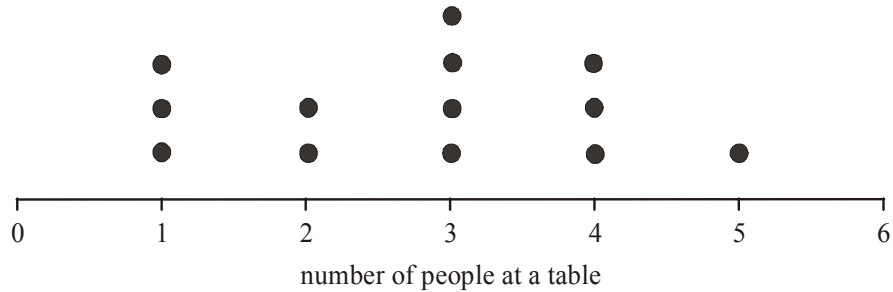
**Question 2**

The score 1 is an outlier because it is less than

- A. 2
- B. 2.5
- C. 4
- D. 5
- E. 7

**Question 3**

The distribution of the number of people seated at each of the 13 tables in a café one lunchtime is displayed on the dot plot below.



The interquartile range of the distribution is

- A. 1.5
- B. 2.5
- C. 2.8
- D. 3
- E. 4

**Question 4**

The height (in cm) of a large population of fifteen year old girls is normally distributed with a mean of 162cm and a standard deviation of 4.5cm. Two hundred of these girls are selected at random. The number with a height of less than 153cm is closest to

- A. 0
- B. 5
- C. 10
- D. 32
- E. 50

The information below relates to questions 5 – 7.

In the log book of a small aircraft is recorded the number of passengers together with their total weight (in kg) for each flight.

The entries for the previous eight flights are shown in the table below.

number of passengers	2	4	3	3	5	4	2	4
total weight (kg)	158	300	215	242	392	347	165	341

### Question 5

Which one of the following statements is true?

- A. The variable “number of passengers” is discrete and is the independent variable.
- B. The variable “number of passengers” is continuous and is the dependent variable.
- C. The variable “total weight” is discrete and is the independent variable.
- D. The variable “total weight” is continuous and is the independent variable.
- E. The variable “total weight” is discrete and is the dependent variable.

### Question 6

The value of  $r$ ; Pearson’s product moment correlation coefficient, for this data correct to four decimal places is closest to

- A. 0.9217
- B. 0.9431
- C. 0.9578
- D. 0.9787
- E. 0.9892

### Question 7

The equation of the least squares regression line for this data is

$$\text{total weight} = 81.1429 \times \text{number of passengers} - 3.8571$$

Based on this, the pilot could assume that for every extra one passenger on board, the extra weight (in kg) on board the plane is

- A. 73.4287
- B. 77.2858
- C. 81.1429
- D. 83.4287
- E. 85

**Question 8**

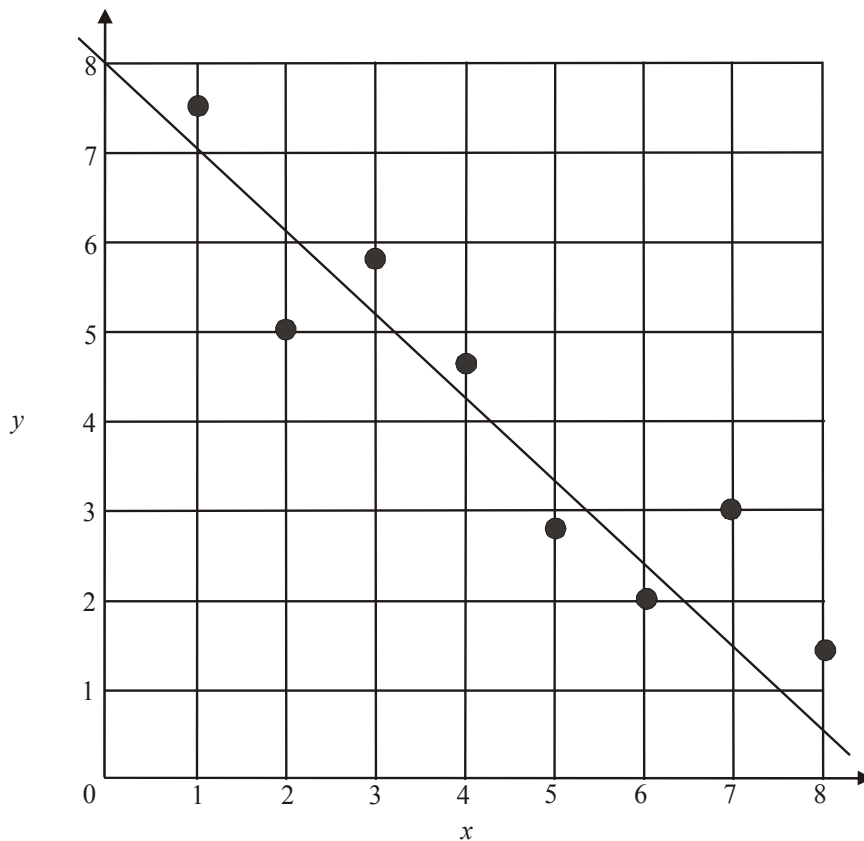
A study involving a large sample of experienced runners showed that there is a positive correlation between the average number of kilometers run each day and the number of injuries incurred over a year. The correlation coefficient is 0.7.

The most accurate statement relating to this study is:

- A. Seventy percent of injuries are caused by running.
- B. An increase in the average number of kilometers run in a week is associated with a decrease in the number of injuries.
- C. Seventy percent of runners are unable to run for at least one week a year because of injuries.
- D. Forty-nine percent of the variation in the number of injuries can be accounted for by the variation in the average number of kilometres run.
- E. Running fewer kilometers causes fewer injuries.

**Question 9**

For a set of bivariate data involving the variables  $x$  and  $y$  a trend line is fitted. A scatterplot showing the data and the trend line is shown below.

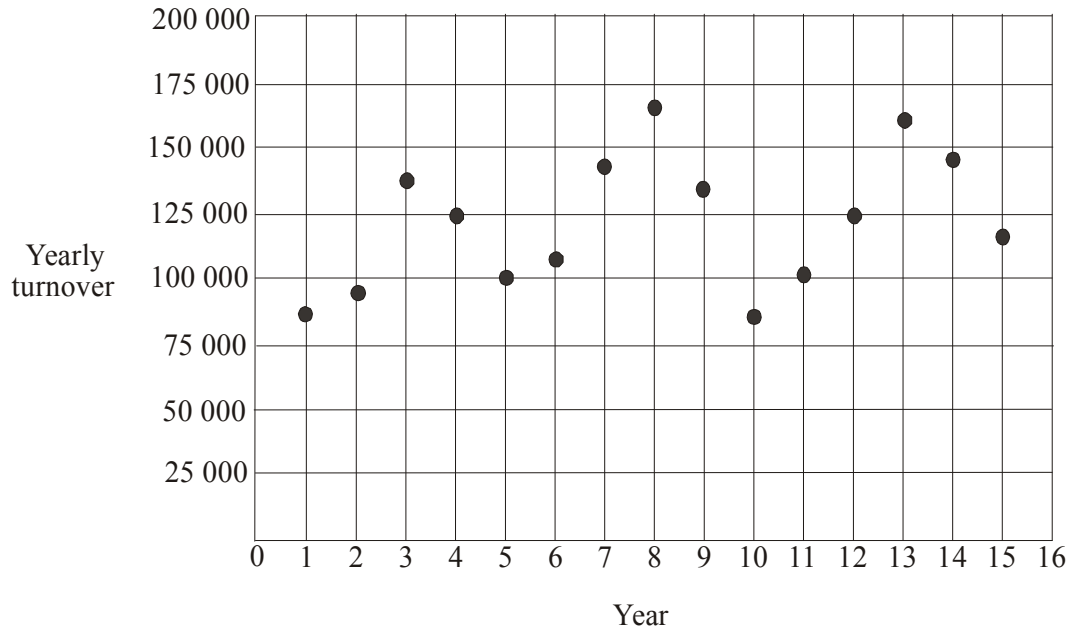


The largest residual value for the eight pieces of data is closest to

- A. 1
- B. 1.5
- C. 3
- D. 4
- E. 7

The information below relates to Questions 10 and 11.

The time series plot below shows the yearly turnover (in dollars) of a small business over a 15 year period.



### Question 10

The time series plot shows

- A. no trend
- B. a seasonal trend
- C. a cyclic trend
- D. a decreasing trend
- E. a random trend.

### Question 11

A three median trend line is fitted to the data. The slope of this trend line (expressed in dollars per year) is

- A. 55
- B. 750
- C. 500
- D. 1500
- E. 2500

**Question 12**

The number of invoices paid each month by a company, are given in the table below.

Month	Jan	Feb	Mar	Apr	May	Jun	Jul	Aug	Sep	Oct	Nov	Dec
Number of invoices paid	12	20	28	32	30	25	23	25	30	35	21	24

A three mean moving average is used to smooth the data. The smoothed value for June is

- A. 23
- B. 25
- C. 26
- D. 26.5
- E. 27

**Question 13**

The table below shows the seasonal indices for quarterly sales (in dollars) at a factory outlet shop.

Quarter	1	2	3	4
Seasonal index	0.94	0.97	1.23	0.86

The deseasonalised sales for the factory outlet shop in Quarter 3 are \$325 000. The actual sales, in dollars, for the shop in Quarter 3 are

- A. 164 228
- B. 279 500
- C. 315 250
- D. 335 051
- E. 399 750

**SECTION B****Module 1: Number patterns**

If you choose this module all questions must be answered.

**Question 1**

For the arithmetic sequence 4, 11, 18, 25, ... the twentieth term is

- A. 83
- B. 116
- C. 130
- D. 137
- E. 144

**Question 2**

A geometric sequence is given by 3,  $m$ , 48, ...  
The value of  $m$  could be

- A. 4
- B. 6
- C. 8
- D. 12
- E. 16

**Question 3**

A Fibonacci sequence is defined by the difference equation  $t_n = t_{n-2} + t_{n-1}$ ,  $t_1 = -3$ ,  $t_2 = 1$ .  
The sixth term of this sequence is

- A. -10
- B. -4
- C. -3
- D. 4
- E. 14

**Question 4**

A meat processing machine increases its output by 2% each hour. It produced 18 kg in its first hour of operation.

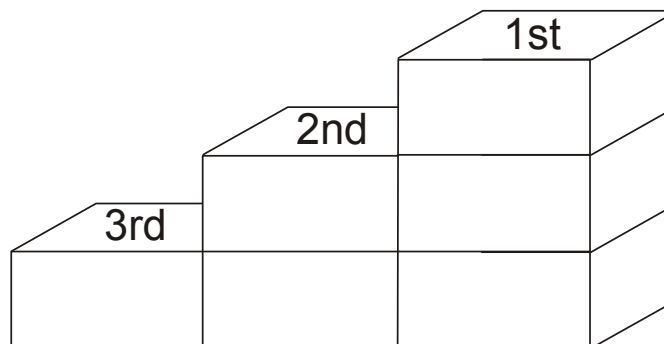
The total output, in kg, of this machine after nine hours is closest to

- A. 154.49
- B. 175.58
- C. 198.72
- D. 900
- E. 9198



**Question 5**

The first three place getters in a race stand on a dais during the presentation of medals. The dais is made up of six identical rectangular boxes as shown in the diagram below.



A dais for the first twenty place getters in a marathon race is to be similarly constructed. The number of these rectangular boxes required would be

- A. 20
- B. 120
- C. 198
- D. 200
- E. 210

**Question 6**

The annual budget allocated to a museum is made up of the previous year's budget plus 3.5% of the previous year's budget plus an annual grant of \$6000.

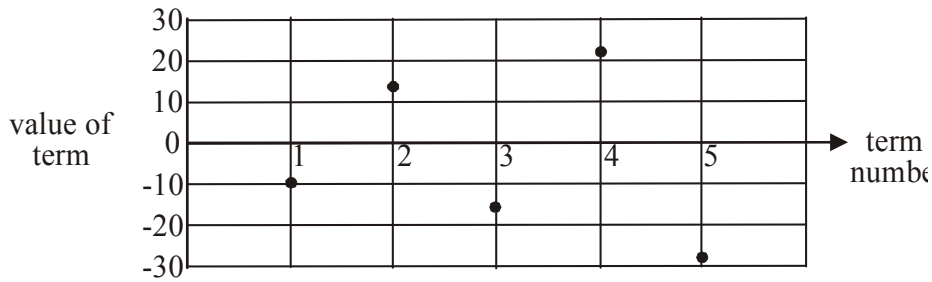
The museum had an initial budget of \$42 000.

A difference equation that gives the budget allocation for the museum in its  $n^{\text{th}}$  year of operation is

- A.  $B_{n+1} = 3 \cdot 5B_n + 6000$        $B_1 = 42\,000$
- B.  $B_{n+1} = 3 \cdot 5(B_n + 6000)$        $B_1 = 42\,000$
- C.  $B_{n+1} = 1 \cdot 035B_n + 6000$        $B_1 = 42\,000$
- D.  $B_{n+1} = 1 \cdot 035(B_n + 6000)$        $B_1 = 42\,000$
- E.  $B_{n+1} = 1 \cdot 35(B_n + 6000)$        $B_1 = 42\,000$

**Question 7**

The first five terms of a sequence are plotted on the graph below.



A possible first order difference equation that could describe this sequence is

- A.  $t_n = -1 \cdot 3t_{n-1}, t_1 = -10$
- B.  $t_n = 1 \cdot 3t_{n-1}, t_1 = -10$
- C.  $t_n = t_{n-1} - 23, t_1 = -10$
- D.  $t_n = t_{n-1} + 23, t_1 = -10$
- E.  $t_n = 1 \cdot 3t_{n-1} - 23, t_1 = -10$

**Question 8**

The initial dose of a prescription drug contains 10mg of the active ingredient. Each subsequent dose contains just 96% of the active ingredient contained in the previous dose.

Over the course of this drug being administered to a patient, the total amount of active ingredient in mg taken by the patient will be

- A. 40
- B. 83.8
- C. 96
- D. 176.2
- E. 250

**Question 9**

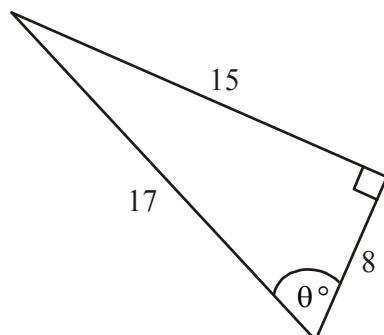
The difference equation  $t_{n+1} = 0 \cdot 5t_n - 1, t_1 = 1000$ , describes a sequence.

Which one of the following statements about this sequence is **not** true?

- A. The sequence is decreasing.
- B. The sequence is not arithmetic.
- C. The sequence has only positive numbers.
- D. The sequence is not geometric.
- E.  $t_3 = 248 \cdot 5$ .

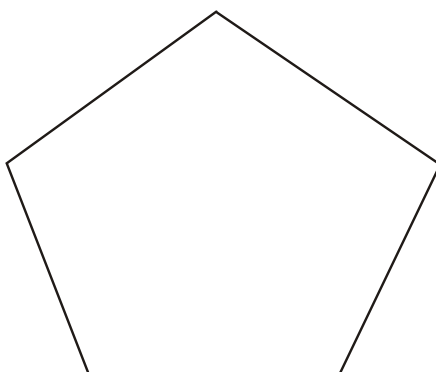
**Module 2: Geometry and trigonometry**

If you choose this module all questions must be answered.

**Question 1**

In the triangle above  $\cos \theta$  is equal to

- A.  $\frac{8}{15}$
- B.  $\frac{8}{17}$
- C.  $\frac{15}{17}$
- D.  $\frac{15}{8}$
- E.  $\frac{17}{15}$

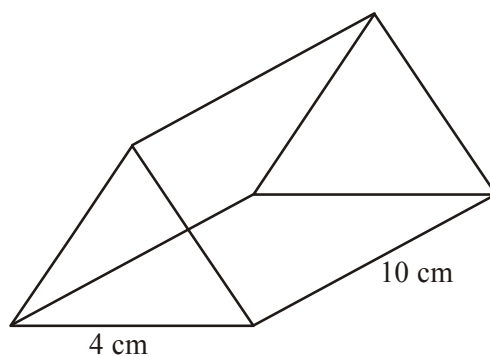
**Question 2**

The diagram above shows a regular pentagon.  
The sum of the interior angles of this pentagon is

- A.  $108^\circ$
- B. 280
- C.  $360^\circ$
- D.  $540^\circ$
- E.  $720^\circ$

**Question 3**

A triangular prism with a cross-section of an equilateral triangle is shown below.

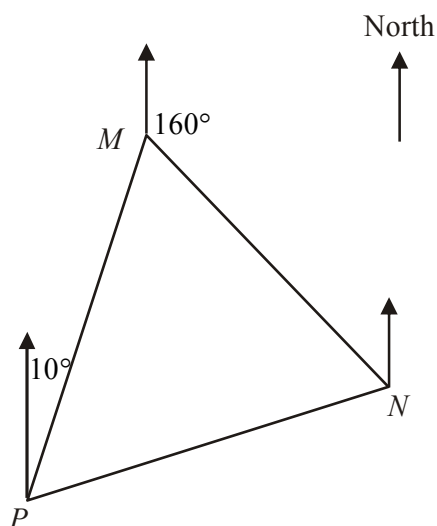


The sidelengths of the triangle are 4cm and the length of the prism is 10cm.  
The surface area in  $\text{cm}^2$  is

- A. 46.93
- B. 80
- C. 93.86
- D. 126.93
- E. 133.86

**Question 4**

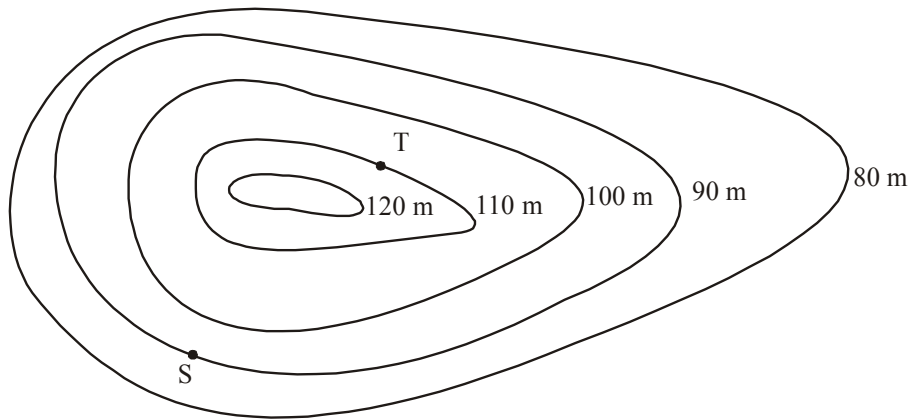
Three landmarks  $M$ ,  $N$  and  $P$  are shown on the diagram below.



The bearing of  $M$  from  $P$  is  $010^\circ$  and the bearing of  $N$  from  $M$  is  $160^\circ$ .  
The bearing of  $P$  from  $M$  is

- A.  $010^\circ$
- B.  $080^\circ$
- C.  $170^\circ$
- D.  $190^\circ$
- E.  $205^\circ$

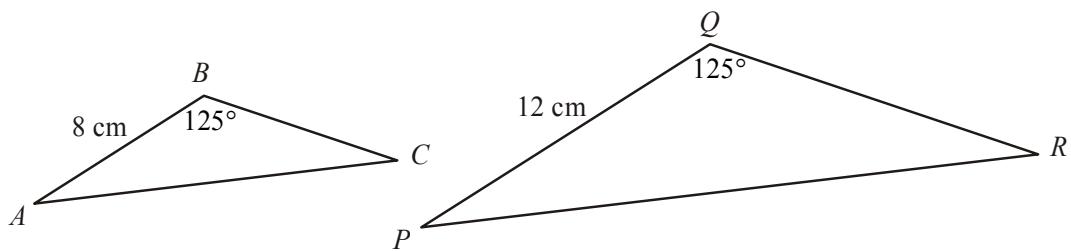
## Question 5



The contour map above has contour intervals of 10m.  
 The horizontal distance from point  $T$  to point  $S$  is 180m.  
 The average slope between point  $T$  and point  $S$  is

- A.  $\frac{1}{18}$   
 B.  $\frac{1}{6}$   
 C.  $\frac{1}{9}$   
 D.  $\frac{2}{11}$   
 E.  $\frac{9}{11}$

## Question 6

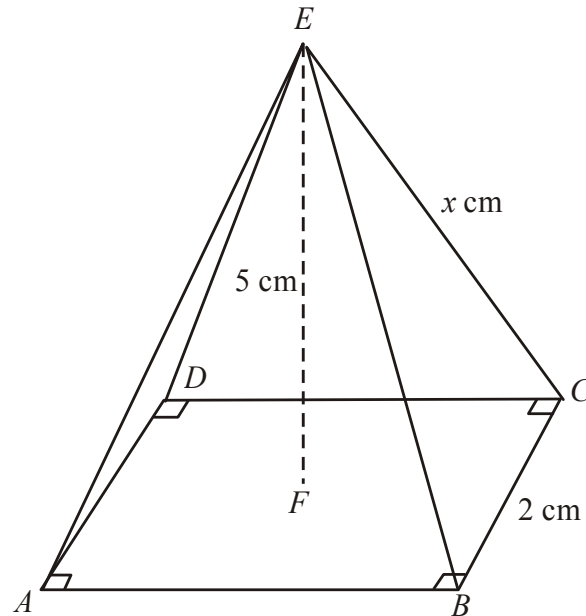


Triangles  $ABC$  and  $PQR$  are similar.  
 The area of triangle  $ABC$  is  $30\text{cm}^2$ .  
 The area of triangle  $PQR$ , in square centimetres, is

- A. 13.3  
 B. 20  
 C. 45  
 D. 67.5  
 E. 101.25

**Question 7**

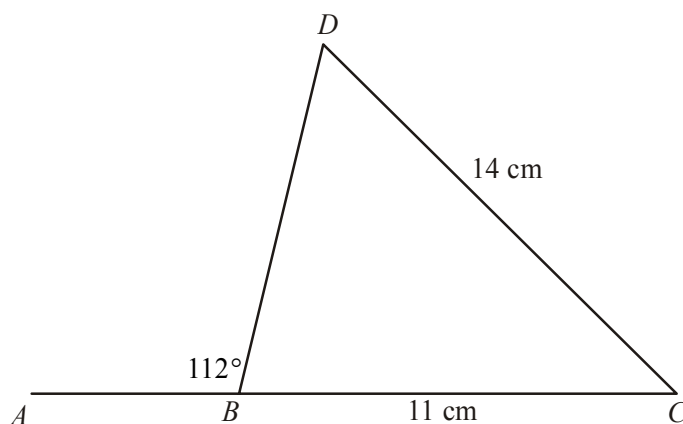
The diagram below shows the right, square-based pyramid  $ABCDE$ .  
The point  $F$  is the centre of the base  $ABCD$ .



The side lengths of the base are  $2\text{ cm}$  and the length of  $EF$  is  $5\text{ cm}$ .  
One of the slant sides  $CE$  has a length of  $x\text{ cm}$ .

The value of  $x$  is

- A.  $\sqrt{21}$
- B.  $\sqrt{23}$
- C.  $\sqrt{27}$
- D.  $\sqrt{29}$
- E.  $\sqrt{33}$

**Question 8**

In the diagram above, angle  $ABD = 112^\circ$ ,  $CD = 14\text{cm}$  and  $BC = 11\text{cm}$ .

The angle  $BCD$  is closest to

- A.  $46.8^\circ$
- B.  $50.2^\circ$
- C.  $61.8^\circ$
- D.  $65.2^\circ$
- E.  $86.5^\circ$

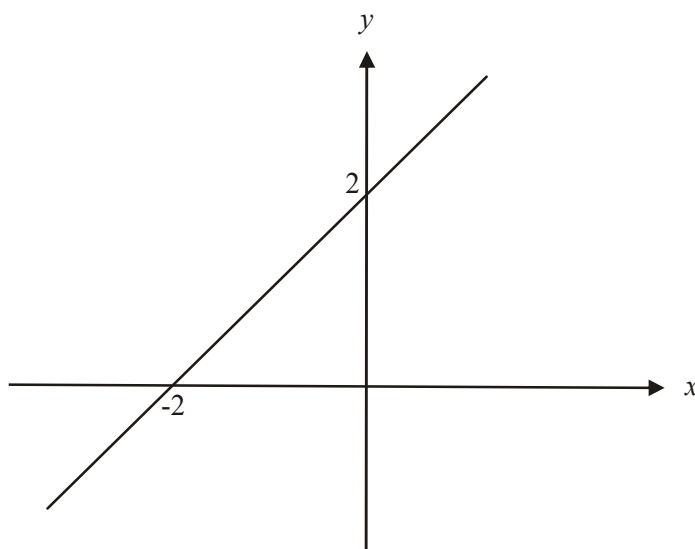
**Question 9**

A walking party start at a carpark and walk 6km on a bearing of  $050^\circ$ . They stop at this point for morning tea. They then walk on a bearing of  $195^\circ$  for a distance of 8km. They stop at this point for lunch. After lunch they walk in a straight line back to the carpark. This final distance, in km, to be covered after lunch is closest to

- A. 4.62
- B. 6.18
- C. 7.79
- D. 13.29
- E. 21.36

**Module 3: Graphs and relations**

If you choose this module all questions must be answered.

**Question 1**

The line above passes through the points  $(-2, 0)$  and  $(0, 2)$ .  
The gradient of this line is

- A.  $-2$
- B.  $-1$
- C.  $0$
- D.  $1$
- E.  $2$

**Question 2**

A phone company has a plan for making international calls where the cost  $C$ , in dollars, for making  $n$  calls in a month is given by the rule  $C = 30 + 4n$ .

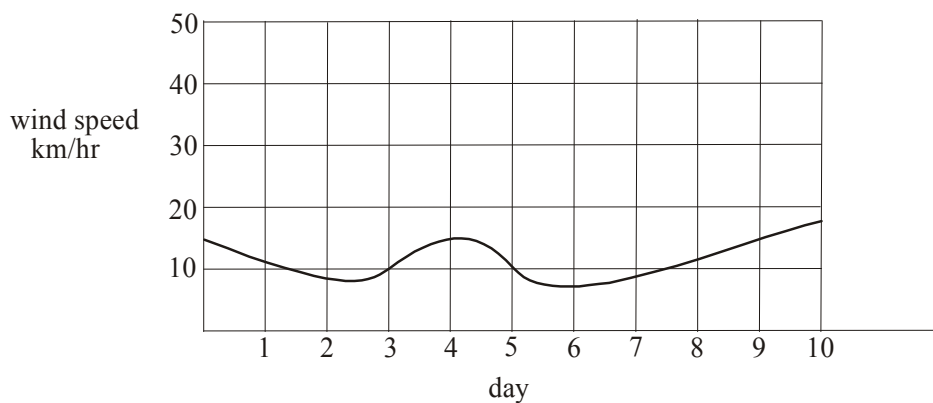
For each call made under this plan, the monthly cost will increase by

- A. \$0.13
- B. \$4
- C. \$7.50
- D. \$30
- E. \$34



The following information relates to questions 3 and 4.

The prevailing wind speed in km/hr recorded over a ten day period at a coastal recording station is shown on the graph below.



### Question 3

Over this ten day period, the wind speed was less than 10km/hr for

- A. less than 2 days
- B. approximately 2 days
- C. approximately 3 days
- D. approximately 4 days
- E. more than six days

### Question 4

The rate at which the wind speed is increasing is greatest between

- A. 0 – 1.5 days
- B. 3 – 4 days
- C. 4 – 5 days
- D. 6 – 10 days
- E. 8 – 10 days

**Question 5**

The cost of hiring 2 overnight and 3 weekly DVD's is \$24.40. At the same shop the cost of hiring 3 overnight and 5 weekly DVD's is \$38.50.

The cost of one overnight and one weekly DVD at this shop would be

- A. \$3.80
- B. \$9.70
- C. \$10.30
- D. \$12.40
- E. \$14.50

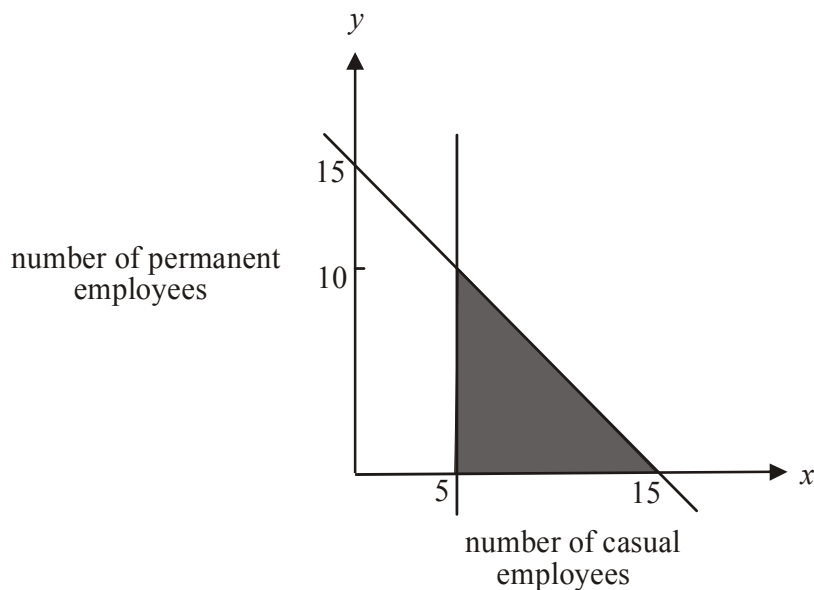
**Question 6**

In a linear programming problem involving the number of casual and permanent staff employed at a fast food outlet,

$x$  = the number of casual employees

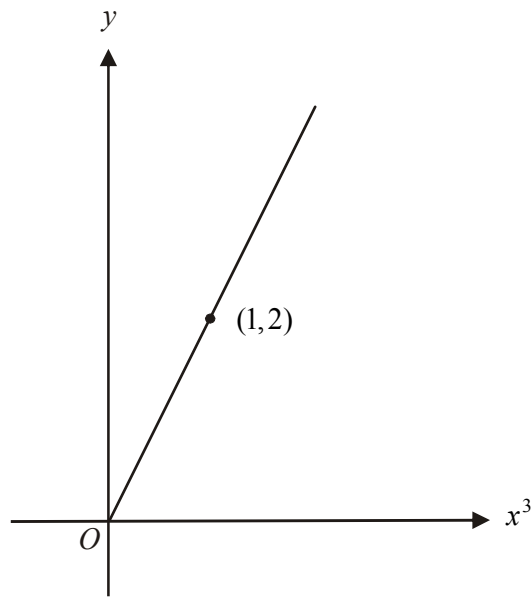
$y$  = the number of permanent employees.

The feasible region for this problem is represented below by the shaded region with boundaries included.



Which one of the following statements is **not** true?

- A. There are three constraints in this problem.
- B. There cannot be less than 5 casual employees.
- C. There can only be a maximum of 15 permanent employees.
- D. There can only be a maximum of 15 casual staff.
- E. There can be 10 casual staff and 3 permanent staff employed.

**Question 7**

The graph above shows the relationship between  $y$  and  $x^3$ .  
The relationship between  $y$  and  $x$  is

- A.  $y = x$
- B.  $y = 2x$
- C.  $y = \frac{1}{2}x^3$
- D.  $y = 2x^3$
- E.  $y = 8x^3$

**Question 8**

A cabinet maker produces television stands at a fixed cost of \$2800 plus \$70 per stand.  
When he sells 30 of these stands to a retailer he makes a profit of \$1100.  
The price that the cabinet maker charged the retailer for each stand was

- A. \$36.67
- B. \$100
- C. \$126.67
- D. \$163.33
- E. \$200

**Question 9**

A clothing manufacturer produces shirts and dresses.

- a shirt requires 20 minutes of labour and 80cm of fabric
- a dress requires 15 minutes of labour and 120cm of fabric
- a total of 2400 minutes of labour is available in a day
- a total of 14 400cm of fabric is available in a day
- $x$  is the number of shirts produced in a day
- $y$  is the number of dresses produced in a day

The constraints due to labour and fabric availability that affect the number of shirts and dresses that can be produced in a day are

- A.**      $20x + 80y \leq 2400$   
           $15x + 120y \leq 14\,400$
- B.**      $20x + 80y \leq 14\,400$   
           $15x + 120y \leq 2\,400$
- C.**      $20x + 15y \leq 2400$   
           $80x + 120y \leq 14\,400$
- D.**      $20x + 15y \leq 14\,400$   
           $80x + 120y \leq 2\,400$
- E.**      $80x + 20y \leq 14\,400$   
           $120x + 15y \leq 2\,400$

**Module 4: Business-related mathematics**

If you choose this module all questions must be answered.
---

**Question 1**

Kim earned \$40 over two years on an amount she invested that earned 2.5% per annum simple interest. The amount that Kim invested was

- A. \$800
- B. \$1 250
- C. \$2 000
- D. \$12 500
- E. \$20 000

**Question 2**

An amount of \$13 000 is invested for 4 years and earns compound interest of 3.2% per annum calculated each 6 months.

The value of the investment at the end of 4 years is

- A. \$13 852.18
- B. \$13 419.33
- C. \$14 760.23
- D. \$16 725.57
- E. \$42 619.39

**Question 3**

Gwen receives a weekly pension of \$350 from an amount she invested in an ordinary perpetuity. The interest rate on this investment is 5% per annum.

The amount Gwen invested in the perpetuity was

- A. \$7 000
- B. \$84 000
- C. \$175 000
- D. \$256 000
- E. \$364 000

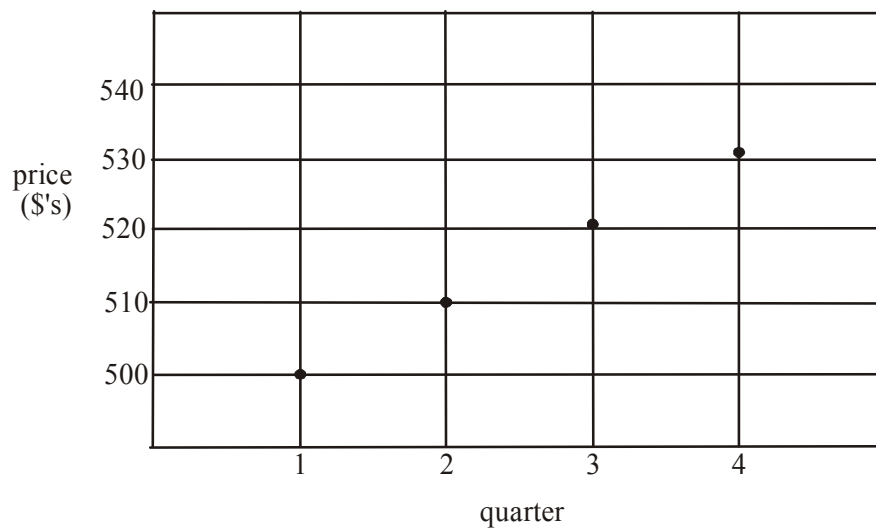
**Question 4**

A fax/scanner/copier machine is depreciated each year for taxation purposes using the reducing balance method. The machine was purchased for \$1 500 and is valued at \$800 after 3 years. The annual rate of depreciation used is closest to

- A. 7%
- B. 15%
- C. 17%
- D. 19%
- E. 23%

**Question 5**

A bicycle retailer increases the prices of his bikes each quarter in line with inflation. The graph below shows the price over 4 quarters of one popular model of bike sold by the retailer.



If inflation was constant during these 4 quarters then the rate of inflation per quarter was

- A. 1.25%
- B. 1.96%
- C. 2%
- D. 2.5%
- E. 10%

*The information below relates to questions 6 and 7.*

Georgia purchases a dining setting valued at \$3 500 under a hire purchase agreement. She pays a deposit of \$1 000 and makes equal fortnightly payments for 26 fortnights. Georgia is charged a flat interest rate of 5% per annum.

**Question 6**

Her fortnightly payments are

- A. \$96.15
- B. \$100.96
- C. \$102.88
- D. \$105.77
- E. \$108.34

**Question 7**

The effective rate of interest per annum under this agreement is closest to

- A. 7.26%
- B. 9.63%
- C. 10%
- D. 12.52%
- E. 52.92%

**Question 8**

Nigel invests \$120 000 in an annuity that earns 5.5% per annum interest compounded monthly and pays him a monthly sum of \$750. The number of years for which this annuity continues is closest to

- A. 10
- B. 12
- C. 16
- D. 22
- E. 24

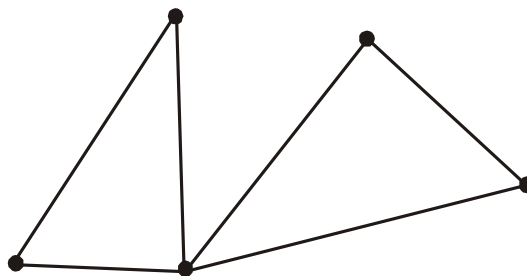
**Question 9**

Paul borrowed \$60 000. He will make equal quarterly repayments over the next 4 years and will be charged 6% interest per annum, calculated quarterly on the reducing balance. After the eighth repayment, the amount of principal that Paul has paid off is

- A. \$26 032.76
- B. \$28 215.48
- C. \$30 000.00
- D. \$31 784.52
- E. \$33 967.24

**Module 5: Networks and decision mathematics**

If you choose this module all questions must be answered.

**Question 1**

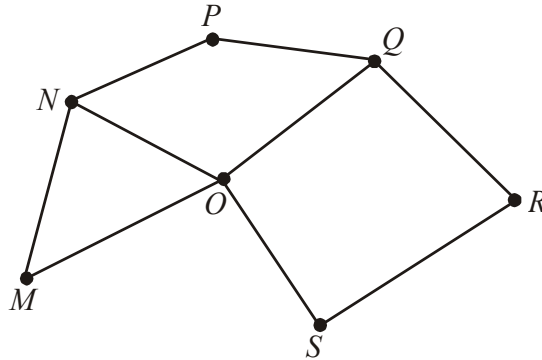
The number of vertices with an even degree in the graph above is

- A. 1
- B. 2
- C. 3
- D. 4
- E. 5



The information below relates to questions 2 and 3.

A graph with vertices  $M - S$  is shown below.



### Question 2

A Hamiltonian path for the graph above is

- A.  $PNOQRS$
- B.  $QRSOQPNOMN$
- C.  $PQRSOMNP$
- D.  $PQRSO N M$
- E.  $SRQP N M O Q$

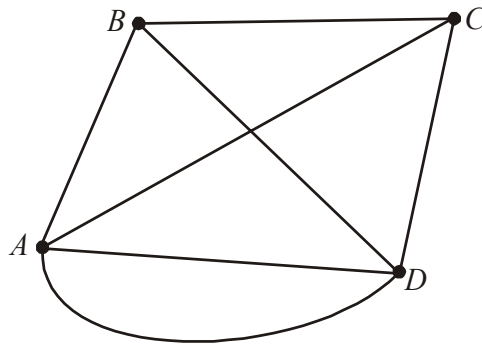
### Question 3

Which one of the following statements is **true** for the graph shown?

- A. The graph is a tree.
- B. The graph is complete.
- C. The graph has at least one loop.
- D. The graph contains an Euler path.
- E. The graph contains an Euler circuit.

**Question 4**

The undirected graph with vertices  $A - D$  is shown below.



An adjacency matrix that could be used to represent this graph is

**A.** 
$$\begin{bmatrix} 0 & 1 & 1 & 1 \\ 1 & 0 & 1 & 1 \\ 1 & 1 & 0 & 1 \\ 1 & 1 & 1 & 0 \end{bmatrix}$$

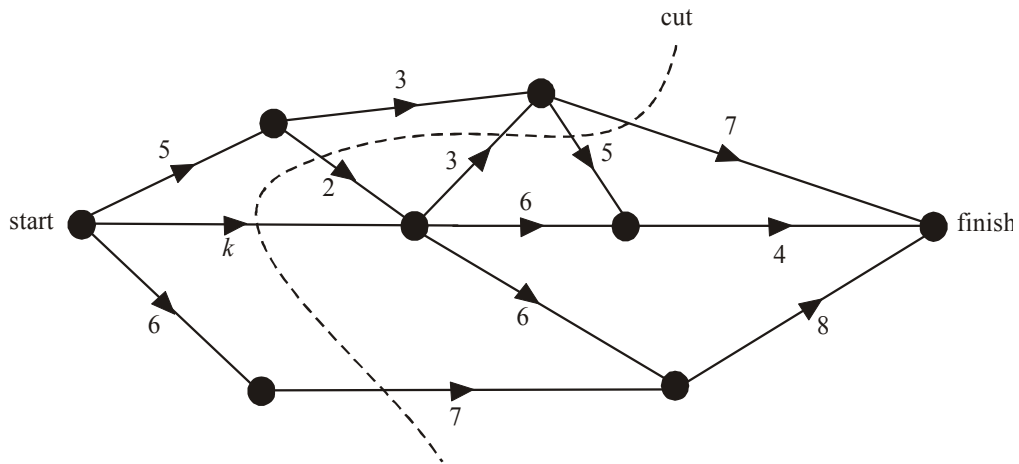
**B.** 
$$\begin{bmatrix} 0 & 2 & 2 & 2 \\ 2 & 0 & 2 & 2 \\ 2 & 2 & 0 & 2 \\ 2 & 2 & 2 & 0 \end{bmatrix}$$

**C.** 
$$\begin{bmatrix} 0 & 1 & 1 & 2 \\ 1 & 0 & 1 & 1 \\ 1 & 1 & 0 & 1 \\ 2 & 1 & 1 & 0 \end{bmatrix}$$

**D.** 
$$\begin{bmatrix} 1 & 0 & 0 & 0 \\ 0 & 1 & 0 & 0 \\ 0 & 0 & 1 & 0 \\ 0 & 0 & 0 & 1 \end{bmatrix}$$

**E.** 
$$\begin{bmatrix} 0 & 1 & 1 & 1 \\ 1 & 0 & 1 & 1 \\ 1 & 1 & 0 & 2 \\ 2 & 1 & 1 & 1 \end{bmatrix}$$

## Question 5

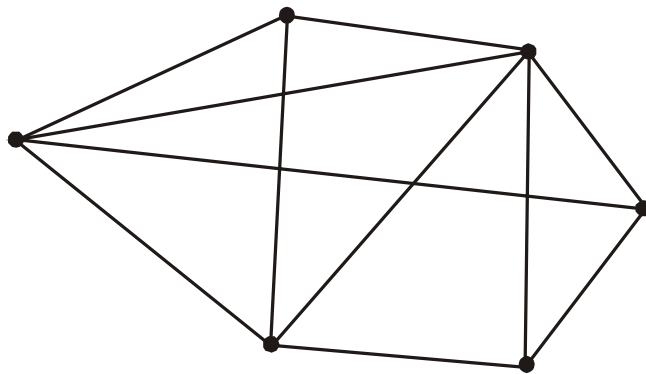


On the directed graph above the capacity of each edge is given. The capacity of the cut shown is 28.

The value of  $k$  is

- A. 4
- B. 6
- C. 7
- D. 8
- E. 10

## Question 6



When drawn as a planar graph, the number of faces on the graph above is

- A. 5
- B. 7
- C. 8
- D. 10
- E. 11

**Question 7**

A company operates four factories  $F1$  to  $F4$  and each factory can produce four different products  $P1$  –  $P4$ . The cost in dollars to produce each of the products at each of the factories is given in the table below.

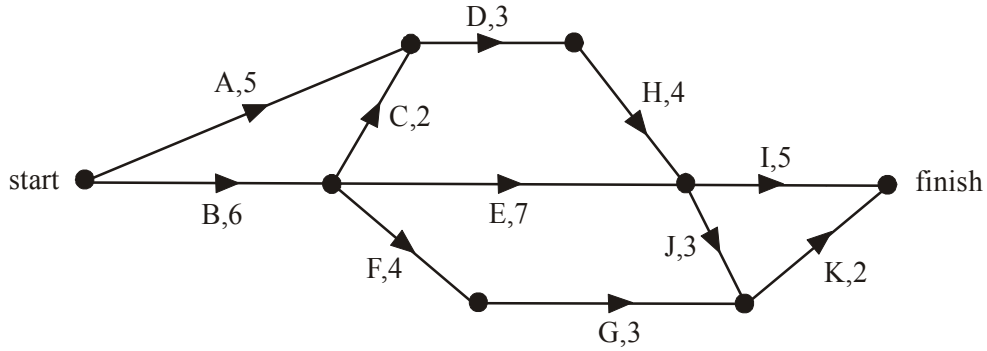
	$P1$	$P2$	$P3$	$P4$
$F1$	3	4	1	1
$F2$	4	7	3	6
$F3$	6	10	6	8
$F4$	8	5	9	4

If the company decides to assign the production of one product to one factory then the assignment that minimises cost is

- A.  $F1$  produces  $P4$   
 $F2$  produces  $P3$   
 $F3$  produces  $P1$   
 $F4$  produces  $P2$
- B.  $F1$  produces  $P3$   
 $F2$  produces  $P4$   
 $F3$  produces  $P2$   
 $F4$  produces  $P1$
- C.  $F1$  produces  $P4$   
 $F2$  produces  $P2$   
 $F3$  produces  $P3$   
 $F4$  produces  $P1$
- D.  $F1$  produces  $P3$   
 $F2$  produces  $P1$   
 $F3$  produces  $P4$   
 $F4$  produces  $P2$
- E.  $F1$  produces  $P2$   
 $F2$  produces  $P4$   
 $F3$  produces  $P1$   
 $F4$  produces  $P3$

The information below relates to questions 8 and 9.

The network below shows the eleven activities needed to complete a project and the time in days that it takes for each activity to be completed.



### Question 8

The number of critical paths is

- A. 1
- B. 2
- C. 3
- D. 4
- E. 5

### Question 9

The total amount of slack time; in days, in the project is

- A. 2
- B. 3
- C. 5
- D. 10
- E. 15

**Module 6: Matrices**

If you choose this module all questions must be answered.

**Question 1**

The matrix expression

$$\begin{bmatrix} 4 & 3 \\ 5 & 2 \end{bmatrix} - \begin{bmatrix} 1 & -2 \\ 3 & 1 \end{bmatrix}$$
 is equal to

- A.  $\begin{bmatrix} 3 & 1 \\ 2 & 1 \end{bmatrix}$
- B.  $\begin{bmatrix} 3 & 5 \\ 2 & 1 \end{bmatrix}$
- C.  $\begin{bmatrix} 3 & 1 \\ 2 & 3 \end{bmatrix}$
- D.  $\begin{bmatrix} 5 & 6 \\ 7 & 1 \end{bmatrix}$
- E.  $\begin{bmatrix} 5 & 6 \\ 8 & 3 \end{bmatrix}$

**Question 2**

If  $A = \begin{bmatrix} 2 & -5 & 7 & 2 \\ 3 & 4 & 6 & 5 \end{bmatrix}$  and  $B = \begin{bmatrix} 9 \\ 7 \\ 5 \\ 4 \end{bmatrix}$ , the order of the matrix product  $AB$  is

- A. not defined
- B.  $(1 \times 2)$
- C.  $(2 \times 1)$
- D.  $(1 \times 4)$
- E.  $(2 \times 4)$

**Question 3**

At the footy, Pete bought 3 pies, 2 hot dogs and 4 buckets of chips.

At the footy, pies cost \$4.50, hot dogs cost \$3.70 and chips cost \$4.20.

The matrix product that gives the total amount Pete spent on food at the footy is

- A.  $[3 \ 2 \ 4][4.50 \ 3.70 \ 4.20]$
- B.  $\begin{bmatrix} 3 \\ 2 \\ 4 \end{bmatrix} \begin{bmatrix} 4.50 \\ 3.70 \\ 4.20 \end{bmatrix}$
- C.  $[3 \times 4.50 \ 2 \times 3.70 \ 4 \times 4.20]$
- D.  $[3 \ 2 \ 4] \begin{bmatrix} 4.50 \\ 3.70 \\ 4.20 \end{bmatrix}$
- E.  $\begin{bmatrix} 4.50 \\ 3.70 \\ 4.20 \end{bmatrix} [3 \ 2 \ 4]$

**Question 4**

The system of simultaneous linear equations

$$2x + y - z = 3$$

$$3y - z = 4$$

$$5x + 3z = 8$$

can be represented in matrix form as

- A.  $\begin{bmatrix} 2 & 1 & -1 \\ 0 & 3 & -1 \\ 0 & 5 & 3 \end{bmatrix} \begin{bmatrix} x \\ y \\ z \end{bmatrix} = \begin{bmatrix} 3 \\ 4 \\ 8 \end{bmatrix}$
- B.  $\begin{bmatrix} 2 & 1 & -1 \\ 0 & 3 & -1 \\ 5 & 0 & 3 \end{bmatrix} \begin{bmatrix} 3 \\ 4 \\ 8 \end{bmatrix} = \begin{bmatrix} x \\ y \\ z \end{bmatrix}$
- C.  $\begin{bmatrix} 2 & 1 & -1 \\ 0 & 3 & -1 \\ 5 & 3 & 0 \end{bmatrix} \begin{bmatrix} 3 \\ 4 \\ 8 \end{bmatrix} = \begin{bmatrix} x \\ y \\ z \end{bmatrix}$
- D.  $\begin{bmatrix} 2 & 1 & -1 \\ 0 & 3 & -1 \\ 5 & 3 & 0 \end{bmatrix} \begin{bmatrix} x \\ y \\ z \end{bmatrix} = \begin{bmatrix} 3 \\ 4 \\ 8 \end{bmatrix}$
- E.  $\begin{bmatrix} 2 & 1 & -1 \\ 0 & 3 & -1 \\ 5 & 0 & 3 \end{bmatrix} \begin{bmatrix} x \\ y \\ z \end{bmatrix} = \begin{bmatrix} 3 \\ 4 \\ 8 \end{bmatrix}$

**Question 5**

The determinant of the matrix  $\begin{bmatrix} a & a \\ 2 & 3 \end{bmatrix}$  is 5.

The value of  $a$  is

- A. -5
- B. -1
- C. 1
- D. 5
- E. 6

**Question 6**

Four sets of simultaneous equations are shown below.

$x + y = 5$ $x + y = 3$	$x = 2$ $3x - y = 1$
$x - y = 4$ $y = 3$	$2x - y = 0$ $3x + y = 0$

The number of these four sets that have a unique solution is/are

- A. 0
- B. 1
- C. 2
- D. 3
- E. 4



**Question 7**

The O'Sullivan's have a family gathering each year in December. They either go to Cath's house ( $C$ ), Gwen's house ( $G$ ) or Dot's house ( $D$ ).

No one else in the family has a house big enough to hold the gathering. They never go to the same person's house two years in a row.

A transition matrix that could be used to model this situation is

A. 
$$\begin{array}{c} \text{this year} \\ C \quad G \quad D \\ \left[ \begin{array}{ccc} 0 & 0.6 & 0.9 \\ 0.7 & 0 & 0.1 \\ 0.3 & 0.4 & 0 \end{array} \right] \begin{array}{l} C \\ G \text{ next year} \\ D \end{array} \end{array}$$

B. 
$$\begin{array}{c} \text{this year} \\ C \quad G \quad D \\ \left[ \begin{array}{ccc} 0.4 & 0.3 & 0.2 \\ 0.4 & 0.5 & 0.3 \\ 0.2 & 0.2 & 0.5 \end{array} \right] \begin{array}{l} C \\ G \text{ next year} \\ D \end{array} \end{array}$$

C. 
$$\begin{array}{c} \text{this year} \\ C \quad G \quad D \\ \left[ \begin{array}{ccc} 1 & 0 & 0 \\ 0 & 1 & 0 \\ 0 & 0 & 1 \end{array} \right] \begin{array}{l} C \\ G \text{ next year} \\ D \end{array} \end{array}$$

D. 
$$\begin{array}{c} \text{this year} \\ C \quad G \quad D \\ \left[ \begin{array}{ccc} 0 & 0.5 & 0.8 \\ 0.2 & 0 & 0.2 \\ 0.3 & 0.4 & 0 \end{array} \right] \begin{array}{l} C \\ G \text{ next year} \\ D \end{array} \end{array}$$

E. 
$$\begin{array}{c} \text{this year} \\ C \quad G \quad D \\ \left[ \begin{array}{ccc} 0 & 0 & 1 \\ 0 & 0 & 1 \\ 1 & 0 & 0 \end{array} \right] \begin{array}{l} C \\ G \text{ next year} \\ D \end{array} \end{array}$$

**Question 8**

The movement of mining workers between two mining towns  $A$  and  $B$  can be predicted by the transition matrix  $T$  where

$$T = \begin{array}{c} \text{this year} \\ A \quad B \\ \left[ \begin{array}{cc} 0.6 & 0.8 \\ 0.4 & 0.2 \end{array} \right] \begin{array}{l} A \\ B \end{array} \text{ next year} \end{array}$$

There were equal numbers of mining workers in towns  $A$  and  $B$  in 2008. In 2009 there were 560 mining workers in town  $A$ . The number of mining workers in town  $B$  in 2008 was

- A. 112
- B. 224
- C. 400
- D. 448
- E. 784

**Question 9**

The price of three different models of a certain brand of vacuum cleaner; each with a turbo or non-turbo motor, is given in the table below.

Model	Turbo	Non-turbo
XC 12	\$980	\$920
XC 15	\$860	\$810
XC 20	\$750	\$720

The store selling the vacuum cleaners discounts the non-turbo models by 20%. The price of the turbo models remains the same.

A matrix product that gives the prices of the 6 different vacuum cleaners after the discount is

A. 
$$\begin{bmatrix} 980 & 920 \\ 860 & 810 \\ 750 & 720 \end{bmatrix} \begin{bmatrix} 1 & 1 \\ 0.8 & 0.8 \end{bmatrix}$$

B. 
$$\begin{bmatrix} 980 & 920 \\ 860 & 810 \\ 750 & 720 \end{bmatrix} \begin{bmatrix} 1 & 0 \\ 0 & 0.2 \end{bmatrix}$$

C. 
$$\begin{bmatrix} 980 & 920 \\ 860 & 810 \\ 750 & 720 \end{bmatrix} \begin{bmatrix} 1 & 0 \\ 0 & 0.8 \end{bmatrix}$$

D. 
$$\begin{bmatrix} 980 & 920 \\ 860 & 810 \\ 750 & 720 \end{bmatrix} \begin{bmatrix} 1 & 1 & 1 \\ 0.8 & 0.8 & 0.8 \end{bmatrix}$$

E. 
$$\begin{bmatrix} 980 & 920 \\ 860 & 810 \\ 750 & 720 \end{bmatrix} \begin{bmatrix} 1 & 0.2 & 0 \\ 1 & 0.2 & 0 \end{bmatrix}$$

## Further Mathematics Formulas

### Core: Data analysis

standardised score:  $z = \frac{x - \bar{x}}{s_x}$

least squares line:  $y = a + bx$  where  $b = r \frac{s_y}{s_x}$  and  $a = \bar{y} - b\bar{x}$

residual value: residual value = actual value – predicted value

seasonal index: seasonal index =  $\frac{\text{actual figure}}{\text{deseasonalised figure}}$

### Module 1: Number patterns

arithmetic series:  $a + (a + d) + \dots + (a + (n - 1)d) = \frac{n}{2}[2a + (n - 1)d] = \frac{n}{2}(a + l)$

geometric series:  $a + ar + ar^2 + \dots + ar^{n-1} = \frac{a(1 - r^n)}{1 - r}, r \neq 1$

infinite geometric series:  $a + ar + ar^2 + ar^3 + \dots = \frac{a}{1 - r}, |r| < 1$

### Module 2: Geometry and trigonometry

area of a triangle:  $\frac{1}{2}bc \sin A$

Heron's formula:  $A = \sqrt{s(s - a)(s - b)(s - c)}$  where  $s = \frac{1}{2}(a + b + c)$

circumference of a circle:  $2\pi r$

area of a circle:  $\pi r^2$

volume of a sphere:  $\frac{4}{3}\pi r^3$

surface area of a sphere:  $4\pi r^2$

volume of a cone:  $\frac{1}{3}\pi r^2 h$

volume of a cylinder:  $\pi r^2 h$

volume of a prism: area of base  $\times$  height

volume of a pyramid:  $\frac{1}{3}$  area of base  $\times$  height

*Reproduced with permission of the Victorian Curriculum and Assessment Authority, Victoria, Australia.*

*These formula sheets have been copied in 2009 from the VCAA website [www.vcaa.vic.edu.au](http://www.vcaa.vic.edu.au)  
The VCAA publish an exam issue supplement to the VCAA bulletin.*

Pythagoras' theorem  $c^2 = a^2 + b^2$

sine rule:  $\frac{a}{\sin A} = \frac{b}{\sin B} = \frac{c}{\sin C}$

cosine rule:  $c^2 = a^2 + b^2 - 2ab \cos C$

### Module 3: Graphs and relations

#### Straight line graphs

gradient (slope):  $m = \frac{y_2 - y_1}{x_2 - x_1}$

equation:  $y = mx + c$

### Module 4: Business-related mathematics

simple interest:  $I = \frac{PrT}{100}$

compound interest:  $A = PR^n$  where  $R = 1 + \frac{r}{100}$

hire purchase: effective rate of interest  $\approx \frac{2n}{n+1} \times \text{flat rate}$

### Module 5: Networks and decision mathematics

Euler's formula:  $v + f = e + 2$

### Module 6: Matrices

determinant of a  $2 \times 2$  matrix  $A = \begin{bmatrix} a & b \\ c & d \end{bmatrix}$ ;  $\det A = \begin{vmatrix} a & b \\ c & d \end{vmatrix} = ad - bc$

inverse of a  $2 \times 2$  matrix  $A^{-1} = \frac{1}{\det A} \begin{bmatrix} d & -b \\ -c & a \end{bmatrix}$  where  $\det A \neq 0$

## END OF FORMULA SHEET

*Reproduced with permission of the Victorian Curriculum and Assessment Authority, Victoria, Australia.*

*These formula sheets have been copied in 2009 from the VCAA website [www.vcaa.vic.edu.au](http://www.vcaa.vic.edu.au)  
The VCAA publish an exam issue supplement to the VCAA bulletin.*

# FURTHER MATHEMATICS

## TRIAL EXAMINATION 1

### MULTIPLE- CHOICE ANSWER SHEET

STUDENT NAME:.....

### INSTRUCTIONS

Fill in the letter that corresponds to your choice. Example:  A  B  C  D  E

The answer selected is B. Only one answer should be selected.

#### Section A - Core

#### Section B - Modules

- |   |  |  |
|---|--|--|
| 1. <input type="radio"/> A <input type="radio"/> B <input type="radio"/> C <input type="radio"/> D <input type="radio"/> E  | Module Number ____   | 5. <input type="radio"/> A <input type="radio"/> B <input type="radio"/> C <input type="radio"/> D <input type="radio"/> E |
| 2. <input type="radio"/> A <input type="radio"/> B <input type="radio"/> C <input type="radio"/> D <input type="radio"/> E  | 1. <input type="radio"/> A <input type="radio"/> B <input type="radio"/> C <input type="radio"/> D <input type="radio"/> E | 6. <input type="radio"/> A <input type="radio"/> B <input type="radio"/> C <input type="radio"/> D <input type="radio"/> E |
| 3. <input type="radio"/> A <input type="radio"/> B <input type="radio"/> C <input type="radio"/> D <input type="radio"/> E  | 2. <input type="radio"/> A <input type="radio"/> B <input type="radio"/> C <input type="radio"/> D <input type="radio"/> E | 7. <input type="radio"/> A <input type="radio"/> B <input type="radio"/> C <input type="radio"/> D <input type="radio"/> E |
| 4. <input type="radio"/> A <input type="radio"/> B <input type="radio"/> C <input type="radio"/> D <input type="radio"/> E  | 3. <input type="radio"/> A <input type="radio"/> B <input type="radio"/> C <input type="radio"/> D <input type="radio"/> E | 8. <input type="radio"/> A <input type="radio"/> B <input type="radio"/> C <input type="radio"/> D <input type="radio"/> E |
| 5. <input type="radio"/> A <input type="radio"/> B <input type="radio"/> C <input type="radio"/> D <input type="radio"/> E  | 4. <input type="radio"/> A <input type="radio"/> B <input type="radio"/> C <input type="radio"/> D <input type="radio"/> E | 9. <input type="radio"/> A <input type="radio"/> B <input type="radio"/> C <input type="radio"/> D <input type="radio"/> E |
| 6. <input type="radio"/> A <input type="radio"/> B <input type="radio"/> C <input type="radio"/> D <input type="radio"/> E  | 5. <input type="radio"/> A <input type="radio"/> B <input type="radio"/> C <input type="radio"/> D <input type="radio"/> E | Module Number ____   |
| 7. <input type="radio"/> A <input type="radio"/> B <input type="radio"/> C <input type="radio"/> D <input type="radio"/> E  | 6. <input type="radio"/> A <input type="radio"/> B <input type="radio"/> C <input type="radio"/> D <input type="radio"/> E | 1. <input type="radio"/> A <input type="radio"/> B <input type="radio"/> C <input type="radio"/> D <input type="radio"/> E |
| 8. <input type="radio"/> A <input type="radio"/> B <input type="radio"/> C <input type="radio"/> D <input type="radio"/> E  | 7. <input type="radio"/> A <input type="radio"/> B <input type="radio"/> C <input type="radio"/> D <input type="radio"/> E | 2. <input type="radio"/> A <input type="radio"/> B <input type="radio"/> C <input type="radio"/> D <input type="radio"/> E |
| 9. <input type="radio"/> A <input type="radio"/> B <input type="radio"/> C <input type="radio"/> D <input type="radio"/> E  | 8. <input type="radio"/> A <input type="radio"/> B <input type="radio"/> C <input type="radio"/> D <input type="radio"/> E | 3. <input type="radio"/> A <input type="radio"/> B <input type="radio"/> C <input type="radio"/> D <input type="radio"/> E |
| 10. <input type="radio"/> A <input type="radio"/> B <input type="radio"/> C <input type="radio"/> D <input type="radio"/> E | 9. <input type="radio"/> A <input type="radio"/> B <input type="radio"/> C <input type="radio"/> D <input type="radio"/> E | 4. <input type="radio"/> A <input type="radio"/> B <input type="radio"/> C <input type="radio"/> D <input type="radio"/> E |
| 11. <input type="radio"/> A <input type="radio"/> B <input type="radio"/> C <input type="radio"/> D <input type="radio"/> E | Module Number ____   | 5. <input type="radio"/> A <input type="radio"/> B <input type="radio"/> C <input type="radio"/> D <input type="radio"/> E |
| 12. <input type="radio"/> A <input type="radio"/> B <input type="radio"/> C <input type="radio"/> D <input type="radio"/> E | 1. <input type="radio"/> A <input type="radio"/> B <input type="radio"/> C <input type="radio"/> D <input type="radio"/> E | 6. <input type="radio"/> A <input type="radio"/> B <input type="radio"/> C <input type="radio"/> D <input type="radio"/> E |
| 13. <input type="radio"/> A <input type="radio"/> B <input type="radio"/> C <input type="radio"/> D <input type="radio"/> E | 2. <input type="radio"/> A <input type="radio"/> B <input type="radio"/> C <input type="radio"/> D <input type="radio"/> E | 7. <input type="radio"/> A <input type="radio"/> B <input type="radio"/> C <input type="radio"/> D <input type="radio"/> E |
|   | 3. <input type="radio"/> A <input type="radio"/> B <input type="radio"/> C <input type="radio"/> D <input type="radio"/> E | 8. <input type="radio"/> A <input type="radio"/> B <input type="radio"/> C <input type="radio"/> D <input type="radio"/> E |
|   | 4. <input type="radio"/> A <input type="radio"/> B <input type="radio"/> C <input type="radio"/> D <input type="radio"/> E | 9. <input type="radio"/> A <input type="radio"/> B <input type="radio"/> C <input type="radio"/> D <input type="radio"/> E |