

insight®

▶ innovative ▶ engaging ▶ evolving

YEAR 12 *Trial Exam Paper*

2023

ART MAKING AND EXHIBITING

Written examination

STUDENT NAME:

Reading time: 15 minutes

Writing time: 1 hour 30 minutes

QUESTION AND ANSWER BOOK

Structure of book

<i>Section</i>	<i>Number of questions</i>	<i>Number of questions to be answered</i>	<i>Number of marks</i>
A	9	9	60
B	2	2	20
			Total 80

- Students are permitted to bring into the examination room: pens, pencils, highlighters, erasers, sharpeners and rulers.
- Students are NOT permitted to bring into the examination room: blank sheets of paper and/or correction fluid/tape.
- No calculator is allowed in this examination.

Materials supplied

- Question and answer book of 15 pages
- An insert for Section A
- Additional space is available at the end of the book if you need extra space to complete an answer.

Instructions

- Write your **name** in the space provided above on this page.
- All written responses must be in English.

Students are NOT permitted to bring mobile phones and/or any other unauthorised electronic devices into the examination room.

This trial examination produced by Insight Publications is NOT an official VCAA paper for the 2023 Art Making and Exhibiting written examination. Every effort has been made to gain permission to reproduce any images and texts herein; failure to do so is not intended to limit the rights of the owner. The Publishers assume no legal liability for the opinions, ideas or statements contained in this trial examination. This examination paper is licensed to be printed, photocopied or placed on the school intranet and used only within the confines of the purchasing school for examining their students. No trial examination or part thereof may be issued or passed on to any other party, including other schools, practising or non-practising teachers, tutors, parents, websites or publishing agencies, without the written consent of Insight Publications.
Copyright © Insight Publications 2023

SECTION A

Instructions for Section A

Please remove the insert from the centre of the book during reading time.
Use the artworks in the insert to answer the questions in Section A.
Answer **all** questions in the spaces provided.

Question 1 (3 marks)

Select an art form that you have studied this year.

Describe the use of **one** technique in your selected art form.

Question 2 (3 marks)

Refer to the artwork *Wedding Dress*, illustrated on page 1 of the insert.

Explain how the artist has used the art element of colour.

Question 3 (4 marks)

Select **one** artwork made by an artist that you have studied this year.

Artist _____

Title of artwork and approximate date _____

- a.** Identify **one** material used in the selected artwork.

1 mark

- b.** How has the artist used the inherent characteristics of materials to communicate ideas in the artwork?

3 marks

Question 4 (10 marks)

Refer to Karel Vítězslav Mašek’s artwork *Alegoric Scene*, illustrated on page 1 of the insert.

- a. Discuss how the artist has used art elements and principles to create aesthetic qualities in the artwork.

6 marks

- b. With reference to the artwork *Alegoric Scene*, describe how the artist has depicted subject matter.

4 marks

Question 5 (6 marks)

Refer to Vincent Namatjira’s artwork *The Royal Tour 5*, illustrated on page 2 of the insert.
Explain how visual language has been created by the artist to communicate ideas and meanings.

Question 6 (9 marks)

Refer to Derby Porcelain’s artwork *Falstaff*, illustrated on page 2 of the insert.

- a. Discuss one method of conservation involved in the display of this artwork in an exhibition space.

3 marks

- b. Explain the responsibilities of the curator in conserving the artwork *Falstaff* during transportation to the exhibition space and preparation for display.

6 marks

Question 7 (4 marks)

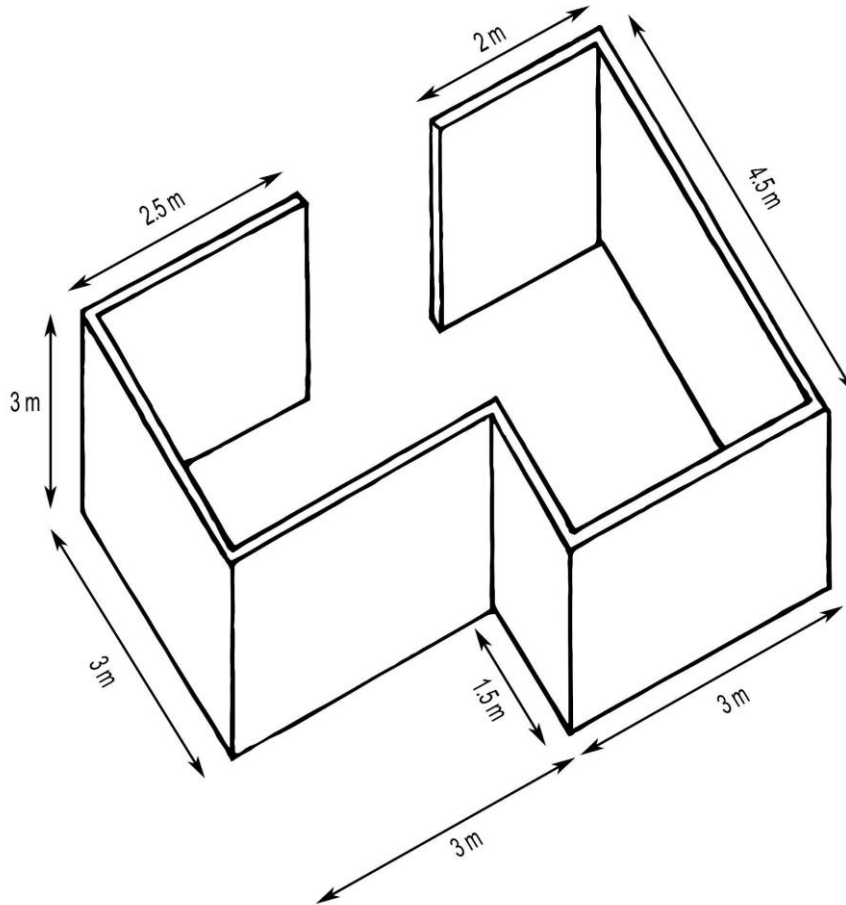
Describe how exhibition design was involved in the presentation of an artwork displayed in an exhibition that you have studied this year.

Question 8 (11 marks)

Refer to the three artworks illustrated on page 3 of the insert.

- a. Show **one** possible display of the three artworks inside the exhibition space illustrated below by writing the numbers of the artworks on the diagram.

3 marks



SECTION B

Instructions for Section B

Answer **all** questions in the spaces provided.

Question 10 (9 marks)

Analyse how the exhibition design and methods of presentation of artworks in an exhibition that you have proposed this year reflect a selected theme. Refer to three artworks from three different artists in your response.

Artist 1 _____

Title of artwork _____

Artist 2 _____

Title of artwork _____

Artist 3 _____

Title of artwork _____

THIS PAGE IS BLANK