



# Mathematics Standard 2

## Section I 15 marks

### Questions 1-15 (1 mark each)

Question	Answer	Content	Outcome Assessed	Targeted Performance Bands
1	B	MSS1.2 Summary Statistics	MS2-12-7	2-3
2	C	MS-A2 Linear Relationships	MS2-12-6	2-3
3	D	MS-N2.1 Networks	MS2-12-8	2-3
4	D	MS-M2 Working with Time	MS2-12-4	3-4
5	B	MS-M6 Non-right Trigonometry	MS2-12-4	3-4
6	B	MS-M7 Rates and Ratios	MS2-12-3	3-4
7	D	MS-S5 The Normal Distribution	MS2-12-7	3-4
8	A	MS-A4.1 Simutanous Linear Equations	MS2-12-6	3-4
9	A	MS-M7 Rates and Ratio	MS2-12-4	4-5
10	D	MS-S2 Relative Freq and Probability	MS2-12-3	3-4
11	C	MS-F1.1 Interest and depreciation	MS2-12-5	4-5
12	B	MS-S4 Bivariate Data Analysis	MS2-12-7	4-5
13	C	MS-F4.1 Investments	MS2-12-5	4-5
14	B	MS-A1 Formulae and Equations	MS2-12-1	5-6
15	A	MS-N3 Criticial Path Analysis	MS2-12-8	5-6

#### Disclaimer

The information contained in this document is intended for the professional assistance of only teaching staff. It does not constitute advice to students. Further it is not the intention of CSSA to provide specific marking outcomes for all possible CSSA Trial HSC Examination answers. Rather the purpose is to provide teachers with information so that they can better explore, understand and apply HSC marking requirements, as established by the NSW Education Standards Authority. No guarantee or warranty is made or implied with respect to the application or use of CSSA Trial HSC Examination Marking Guidelines in relation to any specific 'Trial' HSC Examination question or answer. The CSSA assumes no liability or responsibility for the accuracy, completeness or usefulness of any Marking Guidelines provided for the CSSA Trial HSC Examination papers.

**Section II 85 marks**

**Question 16 (2 marks)**

*Content: MS-A1*

*Outcomes assessed: MS2-12-1*

*Targeted Performance Bands: 3-4*

Criteria	Marks
• Correct working and solution	2
• Substitution of correct values of $N$ and $H$ or similar progress	1

*Sample Answer:*

$$N = 1.4 \times 5 = 7 \text{ standard drinks}$$

$$H = 7.5 \text{ hours}$$

$$M = 72 \text{ kg}$$

$$\begin{aligned} BAC &= \frac{10N - 7.5H}{5.5M} \\ &= \frac{10 \times 7 - 7.5 \times 7.5}{5.5 \times 72} \\ &= 0.03472 \dots \\ &= 0.035 \end{aligned}$$

**Question 17 (2 marks)**

*Content: MS-M7*

*Outcomes assessed: MS1-12-3*

*Targeted Performance Bands: 2-3*

Criteria	Marks
• Correct working and answer	2
• Calculation of number of tiles required or similar progress	1

*Sample Answer:*

$$\text{Area of wall} = 270 \times 330 = 89\,100 \text{ cm}^2$$

$$\text{Area of each tile} = 30 \times 30 = 900 \text{ cm}^2$$

$$\text{Number of tiles needed} = 89\,100 \div 900 = 99$$

$$\text{Number of starbursts} = 99 \times 3 = 297$$

**Disclaimer**

The information contained in this document is intended for the professional assistance of only teaching staff. It does not constitute advice to students. Further it is not the intention of CSSA to provide specific marking outcomes for all possible CSSA Trial HSC Examination answers. Rather the purpose is to provide teachers with information so that they can better explore, understand and apply HSC marking requirements, as established by the NSW Education Standards Authority. No guarantee or warranty is made or implied with respect to the application or use of CSSA Trial HSC Examination Marking Guidelines in relation to any specific 'Trial' HSC Examination question or answer. The CSSA assumes no liability or responsibility for the accuracy, completeness or usefulness of any Marking Guidelines provided for the CSSA Trial HSC Examination papers.

**Question 18 (2 mark)**

*Content: MS-F4.1*

*Outcomes assessed: MS1-12-5*

*Targeted Performance Bands: 2-3*

Criteria	Marks
• Correct working and answer	2
• Use of correct formula with incorrect value for $n$ or similar progress	1

*Sample Answer:*

$$\begin{aligned} FV &= 88(1 + 1.3\%)^{20} \\ &= \$113.94 \\ &= \$114 \end{aligned}$$

**Question 19 (3 marks)**

(a) (1 mark)

*Content: MS-M7*

*Outcomes assessed: MS2-12-4*

*Targeted Performance Bands: 2-3*

Criteria	Marks
• Correct answer	1

*Sample Answer:*

$$\frac{6}{40} \times 100 = 15\%$$

(b) (2 marks)

*Content: MS-M7*

*Outcomes assessed: MS2-12-4*

*Targeted Performance Bands: 3-4*

Criteria	Marks
• Correct working and answer	2
• Correct expression linking the two stages or similar progress	1

*Sample Answer:*

$$\begin{aligned} 15\% &= 36 \\ 1\% &= 2.4 \\ 100\% &= 240 \\ \therefore &240 \text{ turtles} \end{aligned}$$

**Disclaimer**

The information contained in this document is intended for the professional assistance of only teaching staff. It does not constitute advice to students. Further it is not the intention of CSSA to provide specific marking outcomes for all possible CSSA Trial HSC Examination answers. Rather the purpose is to provide teachers with information so that they can better explore, understand and apply HSC marking requirements, as established by the NSW Education Standards Authority. No guarantee or warranty is made or implied with respect to the application or use of CSSA Trial HSC Examination Marking Guidelines in relation to any specific 'Trial' HSC Examination question or answer. The CSSA assumes no liability or responsibility for the accuracy, completeness or usefulness of any Marking Guidelines provided for the CSSA Trial HSC Examination papers.

**Question 20** (3 marks)**Content:** MS-M7**Outcomes assessed:** MS1-12-3**Targeted Performance Bands:** 3-4

Criteria	Marks
• Correct working and answer given to two significant figures	3
• Correct working and answer without rounding to two significant figures	2
• Calculation of number of kilometres per week or similar progress	1

**Sample Answer:**

$$\$75 \div 1.79 = 41.89944 \text{ litres of petrol can be purchased per week}$$

$$41.89944 \div 6.8 \times 100 = 616.168 \text{ km per week}$$

$$\begin{aligned} \text{Yearly travel} &= 616.168 \times 52 \\ &= 32\,040.7 \text{ km} \\ &= 32\,000 \text{ km (two significant figures)} \end{aligned}$$
**Question 21** (6 marks)**(a)** (3 marks)**Content:** MS-M1.2**Outcomes assessed:** MS1-12-4**Targeted Performance Bands:** 3-4

Criteria	Marks
• Correct working and answer	3
• Use of $r = 7.5$ <b>and</b> correct surface area formula	2
• Use of $r = 7.5$ <b>or</b> correct surface area formula	1

**Sample Answer:**

$$\begin{aligned} SA &= \pi r^2 + 2\pi rh \\ &= \pi \times 7.5^2 + 2 \times \pi \times 7.5 \times 12 \\ &= 742.2 \text{ cm}^2 \end{aligned}$$
**Disclaimer**

The information contained in this document is intended for the professional assistance of only teaching staff. It does not constitute advice to students. Further it is not the intention of CSSA to provide specific marking outcomes for all possible CSSA Trial HSC Examination answers. Rather the purpose is to provide teachers with information so that they can better explore, understand and apply HSC marking requirements, as established by the NSW Education Standards Authority. No guarantee or warranty is made or implied with respect to the application or use of CSSA Trial HSC Examination Marking Guidelines in relation to any specific 'Trial' HSC Examination question or answer. The CSSA assumes no liability or responsibility for the accuracy, completeness or usefulness of any Marking Guidelines provided for the CSSA Trial HSC Examination papers.

**(b)** (3 marks)**Content:** MS-M1.2**Outcomes assessed:** MS1-12-4**Targeted Performance Bands:** 3-4

Criteria	Marks
• Correct calculation of volume, capacity and concluding statement	3
• Correct calculation of volume and capacity	2
• Correct calculation of volume	1

**Sample Answer:**

$$\begin{aligned} V &= \pi r^2 h \\ &= \pi \times 7.5^2 \times 12 \\ &= 2120.58 \text{ cm}^3 \end{aligned}$$

$$\begin{aligned} \text{Capacity} &= 2120.58 \text{ mL} \\ &= 2.12058 \text{ L} \end{aligned}$$

The capacity of the pot is  $> 2$  L, therefore the container is large enough for use.

**Disclaimer**

The information contained in this document is intended for the professional assistance of only teaching staff. It does not constitute advice to students. Further it is not the intention of CSSA to provide specific marking outcomes for all possible CSSA Trial HSC Examination answers. Rather the purpose is to provide teachers with information so that they can better explore, understand and apply HSC marking requirements, as established by the NSW Education Standards Authority. No guarantee or warranty is made or implied with respect to the application or use of CSSA Trial HSC Examination Marking Guidelines in relation to any specific 'Trial' HSC Examination question or answer. The CSSA assumes no liability or responsibility for the accuracy, completeness or usefulness of any Marking Guidelines provided for the CSSA Trial HSC Examination papers.

**Question 22** (3 mark)

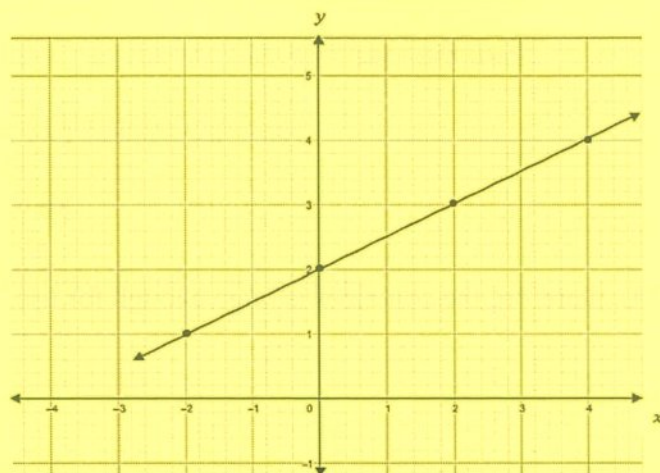
**Content:** MS-F4.1

**Outcomes assessed:** MS1-12-5

**Targeted Performance Bands:** 3-4

Criteria	Marks
• Correctly drawn graph and correct equation	3
• Correctly drawn graph with partly correct equation or similar	2
• Correctly drawn graph with incorrect equation or similar	1

**Sample Answer:**



Equation of the line:  $y = \frac{1}{2}x + 2$

**Question 23** (2 marks)

**Content:** MS-M7

**Outcomes assessed:** MS1-12-3

**Targeted Performance Bands:** 2-3

Criteria	Marks
• Correct working and answer	2
• Conversion of mL into drops or similar progress	1

**Sample Answer:**

900 ml in 6 hours  
= 14 400 drops in 6 hours  
= 2400 drops/h  
= 40 drops/min

**Disclaimer**

The information contained in this document is intended for the professional assistance of only teaching staff. It does not constitute advice to students. Further it is not the intention of CSSA to provide specific marking outcomes for all possible CSSA Trial HSC Examination answers. Rather the purpose is to provide teachers with information so that they can better explore, understand and apply HSC marking requirements, as established by the NSW Education Standards Authority. No guarantee or warranty is made or implied with respect to the application or use of CSSA Trial HSC Examination Marking Guidelines in relation to any specific 'Trial' HSC Examination question or answer. The CSSA assumes no liability or responsibility for the accuracy, completeness or usefulness of any Marking Guidelines provided for the CSSA Trial HSC Examination papers.

**Question 24** (3 marks)

(a) (1 mark)

**Content:** MS-S2

**Outcomes assessed:** MS11-8

**Targeted Performance Bands:** 2-3

Criteria	Marks
• Correct answer	1

**Answer:**  $\frac{2}{7}$

(b) (2 marks)

**Content:** MS-S2

**Outcomes assessed:** MS11-8

**Targeted Performance Bands:** 4-5

Criteria	Marks
• Correct working and answer	2
• Partly correct working or progress	1

**Sample Answer:**

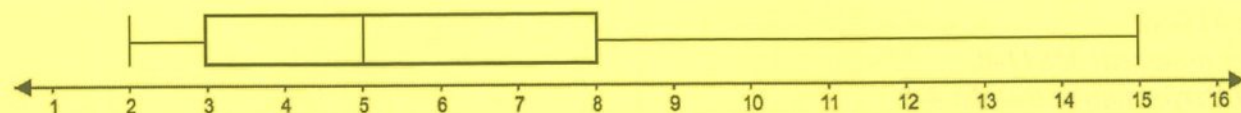
$$P = \left(\frac{2}{7} \times \frac{5}{6}\right) + \left(\frac{5}{7} \times \frac{2}{6}\right)$$
$$= \frac{10}{21}$$

**Disclaimer**

The information contained in this document is intended for the professional assistance of only teaching staff. It does not constitute advice to students. Further it is not the intention of CSSA to provide specific marking outcomes for all possible CSSA Trial HSC Examination answers. Rather the purpose is to provide teachers with information so that they can better explore, understand and apply HSC marking requirements, as established by the NSW Education Standards Authority. No guarantee or warranty is made or implied with respect to the application or use of CSSA Trial HSC Examination Marking Guidelines in relation to any specific 'Trial' HSC Examination question or answer. The CSSA assumes no liability or responsibility for the accuracy, completeness or usefulness of any Marking Guidelines provided for the CSSA Trial HSC Examination papers.

**Question 25** (3 mark)*Content: MS-S1.2**Outcomes assessed: MS2-12-7**Targeted Performance Bands: 4-5*

Criteria	Marks
• Box plot that shows all five correct values from the five-number summary	3
• Box plot that shows 4 correct values from the five-number summary	2
• Box plot that shows 2 or 3 correct values from the five-number summary	1

*Sample Answer:***Question 26** (2 marks)*Content: MS-F4.1**Outcomes assessed: MS1-12-5**Targeted Performance Bands: 3-4*

Criteria	Marks
• Correct working and answer	2
• Calculation of value of shares or similar progress	1

*Sample Answer:*

$$\text{Total value of shares} = \$17.50 \times 2400 = \$42\,000$$

$$\begin{aligned} \text{Dividend yield} &= \frac{504}{42\,000} \times 100 \\ &= 1.2\% \end{aligned}$$

**Disclaimer**

The information contained in this document is intended for the professional assistance of only teaching staff. It does not constitute advice to students. Further it is not the intention of CSSA to provide specific marking outcomes for all possible CSSA Trial HSC Examination answers. Rather the purpose is to provide teachers with information so that they can better explore, understand and apply HSC marking requirements, as established by the NSW Education Standards Authority. No guarantee or warranty is made or implied with respect to the application or use of CSSA Trial HSC Examination Marking Guidelines in relation to any specific 'Trial' HSC Examination question or answer. The CSSA assumes no liability or responsibility for the accuracy, completeness or usefulness of any Marking Guidelines provided for the CSSA Trial HSC Examination papers.

**Question 27** (4 marks)**(a)** (2 marks)*Content: MS-S1.2**Outcomes assessed: MS2-12-7**Targeted Performance Bands: 4-5*

Criteria	Marks
• Correct working and answer	2
• Calculation of IQR or similar progress	1

*Sample Answer:*

$$Q_1 = 511\,000 \quad Q_3 = 566\,000$$

$$IQR = 566\,000 - 511\,000 = 55\,000$$

$$\begin{aligned} &Q_3 + 1.5 \times IQR \\ &= 566\,000 + 1.5 \times 55\,000 \\ &= 648\,500 \end{aligned}$$

$$\$980\,000 > \$648\,500$$

$\therefore$  \$980 000 is an outlier

**(b)** (2 marks)*Content: MS-S1.2**Outcomes assessed: MS2-12-7**Targeted Performance Bands: 4-5*

Criteria	Marks
• Explanation of impact on mean and median with calculations to support	2
• Explanation of impact on either mean or median or without calculations to support	1

*Sample Answer:*

The outlier:

- Causes an increase in the mean.  
 $\bar{x}$ (without outlier) = \$527 143  
 $\bar{x}$ (with outlier) = \$583 750

- Has no impact on the median. The median is unchanged.  
median = \$528 000

**Disclaimer**

The information contained in this document is intended for the professional assistance of only teaching staff. It does not constitute advice to students. Further it is not the intention of CSSA to provide specific marking outcomes for all possible CSSA Trial HSC Examination answers. Rather the purpose is to provide teachers with information so that they can better explore, understand and apply HSC marking requirements, as established by the NSW Education Standards Authority. No guarantee or warranty is made or implied with respect to the application or use of CSSA Trial HSC Examination Marking Guidelines in relation to any specific 'Trial' HSC Examination question or answer. The CSSA assumes no liability or responsibility for the accuracy, completeness or usefulness of any Marking Guidelines provided for the CSSA Trial HSC Examination papers.

**Question 28** (6 marks)

(a) (2 marks)

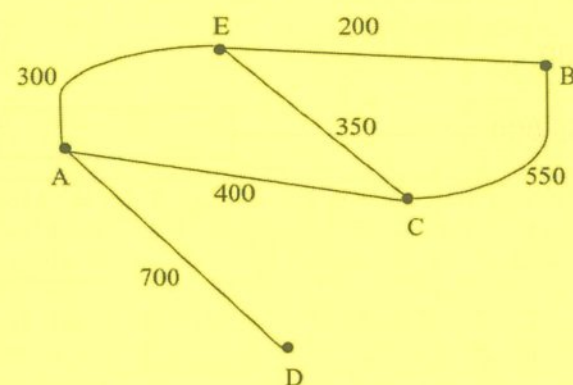
*Content: MS-N2.2*

*Outcomes assessed: MS2-12-8*

*Targeted Performance Bands: 3-4*

Criteria	Marks
• Complete correct network. All edges labelled	2
• Partly correct or incomplete network.	1

*Sample Answer:*



(b) (2 marks)

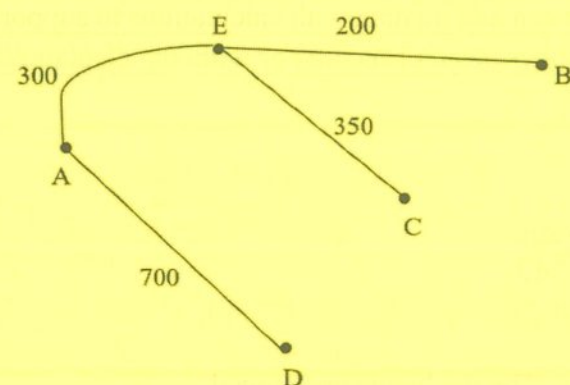
*Content: MS-N2.2*

*Outcomes assessed: MS2-12-8*

*Targeted Performance Bands: 3-4*

Criteria	Marks
• Correct minimum spanning tree.	2
• Partly correct or incomplete spanning tree.	1

*Sample Answer:*



**Disclaimer**

The information contained in this document is intended for the professional assistance of only teaching staff. It does not constitute advice to students. Further it is not the intention of CSSA to provide specific marking outcomes for all possible CSSA Trial HSC Examination answers. Rather the purpose is to provide teachers with information so that they can better explore, understand and apply HSC marking requirements, as established by the NSW Education Standards Authority. No guarantee or warranty is made or implied with respect to the application or use of CSSA Trial HSC Examination Marking Guidelines in relation to any specific 'Trial' HSC Examination question or answer. The CSSA assumes no liability or responsibility for the accuracy, completeness or usefulness of any Marking Guidelines provided for the CSSA Trial HSC Examination papers.

(c) (1 mark)

*Content: MS-N2.2*

*Outcomes assessed: MS2-12-8*

*Targeted Performance Bands: 3-4*

Criteria	Marks
• Correct length	1

*Sample Answer:*

$$300 + 200 + 350 + 700 = 1550 \text{ m}$$

(d) (1 mark)

*Content: MS-N2.2*

*Outcomes assessed: MS2-12-8*

*Targeted Performance Bands: 3-4*

Criteria	Marks
• Correct answer	1

*Sample Answer:*

$$550 - 200 = 350 \text{ m}$$

**Disclaimer**

The information contained in this document is intended for the professional assistance of only teaching staff. It does not constitute advice to students. Further it is not the intention of CSSA to provide specific marking outcomes for all possible CSSA Trial HSC Examination answers. Rather the purpose is to provide teachers with information so that they can better explore, understand and apply HSC marking requirements, as established by the NSW Education Standards Authority. No guarantee or warranty is made or implied with respect to the application or use of CSSA Trial HSC Examination Marking Guidelines in relation to any specific 'Trial' HSC Examination question or answer. The CSSA assumes no liability or responsibility for the accuracy, completeness or usefulness of any Marking Guidelines provided for the CSSA Trial HSC Examination papers.

**Question 29** (2 marks)

**Content:** MS-M7

**Outcomes assessed:** MS1-12-3

**Targeted Performance Bands:** 3-4

Criteria	Marks
• Correct working and answer	2
• Conversion of minutes to hours or similar progress	1

**Sample Answer:**

$$75 \times 0.275 \times 1.5 = \$30.94$$

**Question 30** (7 marks)

**(a)** (3 marks)

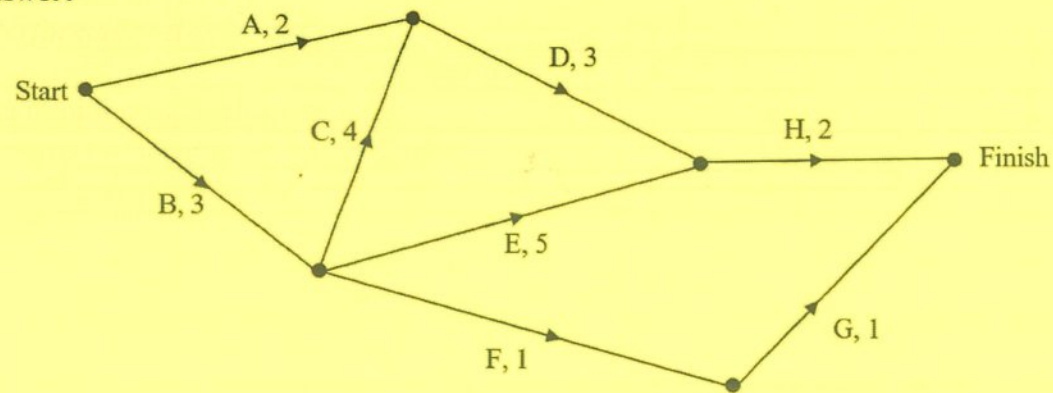
**Content:** MS-N3

**Outcomes assessed:** MS2-12-8

**Targeted Performance Bands:** 4-5

Criteria	Marks
• Correct directed and labelled network diagram and completion time	3
• Correct and labelled network diagram or similar progress	2
• Partly correct or incomplete network diagram or similar progress	1

**Sample Answer:**



Minimum completion time = 12 hours

**Disclaimer**

The information contained in this document is intended for the professional assistance of only teaching staff. It does not constitute advice to students. Further it is not the intention of CSSA to provide specific marking outcomes for all possible CSSA Trial HSC Examination answers. Rather the purpose is to provide teachers with information so that they can better explore, understand and apply HSC marking requirements, as established by the NSW Education Standards Authority. No guarantee or warranty is made or implied with respect to the application or use of CSSA Trial HSC Examination Marking Guidelines in relation to any specific 'Trial' HSC Examination question or answer. The CSSA assumes no liability or responsibility for the accuracy, completeness or usefulness of any Marking Guidelines provided for the CSSA Trial HSC Examination papers.

**(b)** (1 mark)

**Content:** MS-N3

**Outcomes assessed:** MS2-12-8

**Targeted Performance Bands:** 4-5

Criteria	Marks
• Correct answer	1

**Answer:** B C D H

**(c)** (1 mark)

**Content:** MS-N3

**Outcomes assessed:** MS2-12-8

**Targeted Performance Bands:** 4-5

Criteria	Marks
• Correct answer	1

**Answer:** 5 hours

**(d)** (2 marks)

**Content:** MS-N3

**Outcomes assessed:** MS2-12-8

**Targeted Performance Bands:** 4-5

Criteria	Marks
• A correct explanation that considers increases both less than and more than float time	2
• A correct explanation that only considers less than or more than float time	1

**Sample Answer:**

An increase of 7 hours or less will have no impact on the completion time. However, an increase of more than 7 hours will delay the completion time of the project.

**Disclaimer**

The information contained in this document is intended for the professional assistance of only teaching staff. It does not constitute advice to students. Further it is not the intention of CSSA to provide specific marking outcomes for all possible CSSA Trial HSC Examination answers. Rather the purpose is to provide teachers with information so that they can better explore, understand and apply HSC marking requirements, as established by the NSW Education Standards Authority. No guarantee or warranty is made or implied with respect to the application or use of CSSA Trial HSC Examination Marking Guidelines in relation to any specific 'Trial' HSC Examination question or answer. The CSSA assumes no liability or responsibility for the accuracy, completeness or usefulness of any Marking Guidelines provided for the CSSA Trial HSC Examination papers.

**Question 31** (3 mark)

**Content:** MS-S5

**Outcomes assessed:** MS2-12-7

**Targeted Performance Bands:** 4-5

Criteria	Marks
• Correct working and answer	3
• Correct calculation of the percentage of women or similar progress	2
• Correct calculation of z-scores of -3 and 2 or similar progress	1

**Sample Answer:**

z-score corresponding to size 5:

$$z = \frac{5 - 8}{1} \\ = -3$$

z-score corresponding to size 10:

$$z = \frac{10 - 8}{1} \\ = 2$$

$$95\% + \frac{1}{2} (99.7\% - 95\%) \\ = 97.35\%$$

$$97.35\% \times 4000 = 3894$$

∴ 3894 women in the town can find their shoe size.

**Disclaimer**

The information contained in this document is intended for the professional assistance of only teaching staff. It does not constitute advice to students. Further it is not the intention of CSSA to provide specific marking outcomes for all possible CSSA Trial HSC Examination answers. Rather the purpose is to provide teachers with information so that they can better explore, understand and apply HSC marking requirements, as established by the NSW Education Standards Authority. No guarantee or warranty is made or implied with respect to the application or use of CSSA Trial HSC Examination Marking Guidelines in relation to any specific 'Trial' HSC Examination question or answer. The CSSA assumes no liability or responsibility for the accuracy, completeness or usefulness of any Marking Guidelines provided for the CSSA Trial HSC Examination papers.

**Question 32** (6 marks)

(a) (4 marks)

**Content:** MS-A4.2

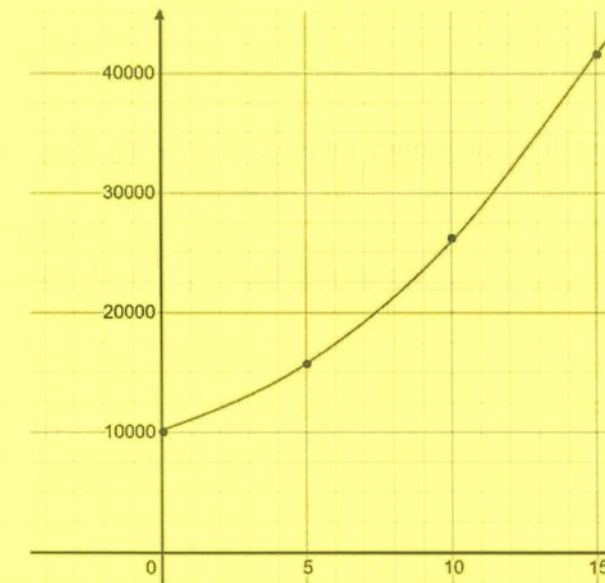
**Outcomes assessed:** MS2-12-6

**Targeted Performance Bands:** 4-5

Criteria	Marks
• All correct values in the table and accurate exponential graph starting at 10 000	4
• All correct values in the table and an inaccurate graph or similar progress	3
• Some correct values in the table and/or incorrect graph	2
• Limited correct values in the table and graph or similar progress	1

**Sample Answer:**

n	0	5	10	15
A	10 000	16 105.10	25 937.42	41 772.48



**Disclaimer**

The information contained in this document is intended for the professional assistance of only teaching staff. It does not constitute advice to students. Further it is not the intention of CSSA to provide specific marking outcomes for all possible CSSA Trial HSC Examination answers. Rather the purpose is to provide teachers with information so that they can better explore, understand and apply HSC marking requirements, as established by the NSW Education Standards Authority. No guarantee or warranty is made or implied with respect to the application or use of CSSA Trial HSC Examination Marking Guidelines in relation to any specific 'Trial' HSC Examination question or answer. The CSSA assumes no liability or responsibility for the accuracy, completeness or usefulness of any Marking Guidelines provided for the CSSA Trial HSC Examination papers.



(b) (1 mark)

Content: MS-A4.2

Outcomes assessed: MS2-12-6

Targeted Performance Bands: 3-4

Criteria	Marks
• Correct answer	1

Sample Answer:

The investment will have doubled from \$10 000 to \$20 000 in approximately  $7\frac{1}{2}$  years.

(c) (1 mark)

Content: MS-A4.2

Outcomes assessed: MS2-12-6

Targeted Performance Bands: 3-4

Criteria	Marks
• Correct answer	1

Sample Answer:

The investment is exponential growth as the money invested is growing by an increasing amount each year.

#### Disclaimer

The information contained in this document is intended for the professional assistance of only teaching staff. It does not constitute advice to students. Further it is not the intention of CSSA to provide specific marking outcomes for all possible CSSA Trial HSC Examination answers. Rather the purpose is to provide teachers with information so that they can better explore, understand and apply HSC marking requirements, as established by the NSW Education Standards Authority. No guarantee or warranty is made or implied with respect to the application or use of CSSA Trial HSC Examination Marking Guidelines in relation to any specific 'Trial' HSC Examination question or answer. The CSSA assumes no liability or responsibility for the accuracy, completeness or usefulness of any Marking Guidelines provided for the CSSA Trial HSC Examination papers.

Question 33 (2 marks)

Content: MS-M6

Outcomes assessed: MS1-12-4

Targeted Performance Bands: 3-4

Criteria	Marks
• Correct working and answer	2
• Use of cosine rule	1

Sample Answer:

$$c^2 = a^2 + b^2 - 2ab \cos C$$

$$x^2 = 8.8^2 + 18.4^2 - 2 \times 8.8 \times 18.4 \times \cos 65^\circ$$

$$x^2 = 279.139 \dots$$

$$\therefore x = 16.7 \text{ cm}$$

Question 34 (3 marks)

(a) (2 marks)

Content: MS-M1.2

Outcomes assessed: MS2-12-4

Targeted Performance Bands: 3-4

Criteria	Marks
• Correct working and answer	2
• One application of trapezoidal rule or similar progress	1

Sample Answer:

$$A \approx \frac{h}{2}(d_f + d_l) + \frac{h}{2}(d_f + d_l)$$

$$A \approx \frac{8}{2}(5 + 3) + \frac{8}{2}(3 + 7)$$

$$A \approx 72 \text{ m}^2$$

#### Disclaimer

The information contained in this document is intended for the professional assistance of only teaching staff. It does not constitute advice to students. Further it is not the intention of CSSA to provide specific marking outcomes for all possible CSSA Trial HSC Examination answers. Rather the purpose is to provide teachers with information so that they can better explore, understand and apply HSC marking requirements, as established by the NSW Education Standards Authority. No guarantee or warranty is made or implied with respect to the application or use of CSSA Trial HSC Examination Marking Guidelines in relation to any specific 'Trial' HSC Examination question or answer. The CSSA assumes no liability or responsibility for the accuracy, completeness or usefulness of any Marking Guidelines provided for the CSSA Trial HSC Examination papers.

(b) (1 mark)

Content: MS-M1.2

Outcomes assessed: MS2-12-4

Targeted Performance Bands: 3-4

Criteria	Marks
• Correct explanation	1

Sample Answer:

The trapezoidal rule calculates the area of a trapezium formed with these dimensions and a straight line. The boundary of the garden is consistently below the trapezium that would be formed so the area calculated is an over-estimation of the area of the garden.

Question 35 (5 marks)

(a) (3 marks)

Content: MS-F5

Outcomes assessed: MS2-12-5

Targeted Performance Bands: 4-5

Criteria	Marks
• Correct calculation of the FV of the annuity and concluding statement	3
• Correct calculation of the FV of the annuity	2
• Use of 6.3081 from table or similar progress	1

Sample Answer:

$$FV = 6.3081 \times 500 \\ = \$3154.05$$

The future value of the annuity is greater than \$3100 so Scarlett will have enough money to pay for her holiday.

(b) (2 marks)

Content: MS-F5

Outcomes assessed: MS2-12-5

Targeted Performance Bands: 4-5

Criteria	Marks
• Correct working and answer	2
• Use of 4.1216 from table	1

Sample Answer:

$$\text{Contribution per period} = 3100 \div 4.1216 \\ = \$752.14$$

**Disclaimer**

The information contained in this document is intended for the professional assistance of only teaching staff. It does not constitute advice to students. Further it is not the intention of CSSA to provide specific marking outcomes for all possible CSSA Trial HSC Examination answers. Rather the purpose is to provide teachers with information so that they can better explore, understand and apply HSC marking requirements, as established by the NSW Education Standards Authority. No guarantee or warranty is made or implied with respect to the application or use of CSSA Trial HSC Examination Marking Guidelines in relation to any specific 'Trial' HSC Examination question or answer. The CSSA assumes no liability or responsibility for the accuracy, completeness or usefulness of any Marking Guidelines provided for the CSSA Trial HSC Examination papers.

Question 36 (2 marks)

Content: MS-S5

Outcomes assessed: MS2-12-7

Targeted Performance Bands: 4-5

Criteria	Marks
• Correct working and answer	2
• Calculation of mean or similar progress	1

Sample Answer:

$$z = \frac{x - \mu}{\sigma}$$

$$-1.75 = \frac{62 - \mu}{8}$$

$$\mu = 76$$

$$\text{Ivan's mark} = 76 + 1.75 \times 8 \\ = 90$$

Question 37 (4 marks)

(a) (3 marks)

Content: MS-S4

Outcomes assessed: MS2-12-7

Targeted Performance Bands: 5-6

Criteria	Marks
• Correct calculation of the least-squares equation and cost of a 4 year old car	3
• Correct calculation of the least-squares equation or similar progress	2
• Partly correct calculation of the equation or similar progress	1

Sample Answer:

$$m = -2285 \quad c = 28\,460$$

$$\therefore P = 28\,460 - 2285A$$

$$\text{When } A = 4, \quad P = 28460 - 2285 \times 4 \\ = \$19\,320$$

**Disclaimer**

The information contained in this document is intended for the professional assistance of only teaching staff. It does not constitute advice to students. Further it is not the intention of CSSA to provide specific marking outcomes for all possible CSSA Trial HSC Examination answers. Rather the purpose is to provide teachers with information so that they can better explore, understand and apply HSC marking requirements, as established by the NSW Education Standards Authority. No guarantee or warranty is made or implied with respect to the application or use of CSSA Trial HSC Examination Marking Guidelines in relation to any specific 'Trial' HSC Examination question or answer. The CSSA assumes no liability or responsibility for the accuracy, completeness or usefulness of any Marking Guidelines provided for the CSSA Trial HSC Examination papers.

(b) (1 mark)

Content: MS-S4

Outcomes assessed: MS2-12-7

Targeted Performance Bands: 3-4

Criteria	Marks
• Correct explanation	1

Sample Answer:

This is extrapolation - the age of John's car is outside the range of data that was used to form this equation and so the equation is not valid for a car this age.

Question 38 (5 marks)

(a) (3 mark)

Content: MS-F4.1

Outcomes assessed: MS2-12-5

Targeted Performance Bands: 4-5

Criteria	Marks
• Correct working and answer	3
• Correct calculation of amount of interest earned in month 5 or similar progress	2
• Correct calculation of principal at start of the month 5 or similar progress	1

Sample Answer:

$$\begin{aligned} \text{Balance (end of month 4)} &= 496994 + 1490.98 - 3800 \\ &= \$494\,684.98 \end{aligned}$$

$$\text{Principal (start of month 5)} = \$494\,684.98$$

$$\begin{aligned} \text{Interest (month 5)} &= \$494\,684.98 \times 0.3\% \\ &= \$1484.05 \end{aligned}$$

$$\begin{aligned} \text{Withdrawal (month 5)} &= 494\,684.98 - 491\,969.03 + 1484.05 \\ &= \$4200 \end{aligned}$$

**Disclaimer**

The information contained in this document is intended for the professional assistance of only teaching staff. It does not constitute advice to students. Further it is not the intention of CSSA to provide specific marking outcomes for all possible CSSA Trial HSC Examination answers. Rather the purpose is to provide teachers with information so that they can better explore, understand and apply HSC marking requirements, as established by the NSW Education Standards Authority. No guarantee or warranty is made or implied with respect to the application or use of CSSA Trial HSC Examination Marking Guidelines in relation to any specific 'Trial' HSC Examination question or answer. The CSSA assumes no liability or responsibility for the accuracy, completeness or usefulness of any Marking Guidelines provided for the CSSA Trial HSC Examination papers.

(b) (2 marks)

Content: MS-F4.1

Outcomes assessed: MS2-12-5

Targeted Performance Bands: 4-5

Criteria	Marks
• Correct working and answer	2
• Correct collection of balance after sixth month or similar progress	1

Sample Answer:

$$\begin{aligned} A_6 &= A_5 \times 1.003 - 7500 \\ &= 491\,969.03 \times 1.003 - 7500 \\ &= \$485\,944.94 \end{aligned}$$

$$\begin{aligned} A_7 &= A_6 \times 1.003 - 7500 \\ &= 485\,944.94 \times 1.003 - 7500 \\ &= \$479\,902.77 \end{aligned}$$

**Disclaimer**

The information contained in this document is intended for the professional assistance of only teaching staff. It does not constitute advice to students. Further it is not the intention of CSSA to provide specific marking outcomes for all possible CSSA Trial HSC Examination answers. Rather the purpose is to provide teachers with information so that they can better explore, understand and apply HSC marking requirements, as established by the NSW Education Standards Authority. No guarantee or warranty is made or implied with respect to the application or use of CSSA Trial HSC Examination Marking Guidelines in relation to any specific 'Trial' HSC Examination question or answer. The CSSA assumes no liability or responsibility for the accuracy, completeness or usefulness of any Marking Guidelines provided for the CSSA Trial HSC Examination papers.